

PLFY-L15NFMU-A

15,000 BTU/H CEILING CASSETTE INDOOR UNIT



Job Name:

System Reference:

Date:



GENERAL FEATURES

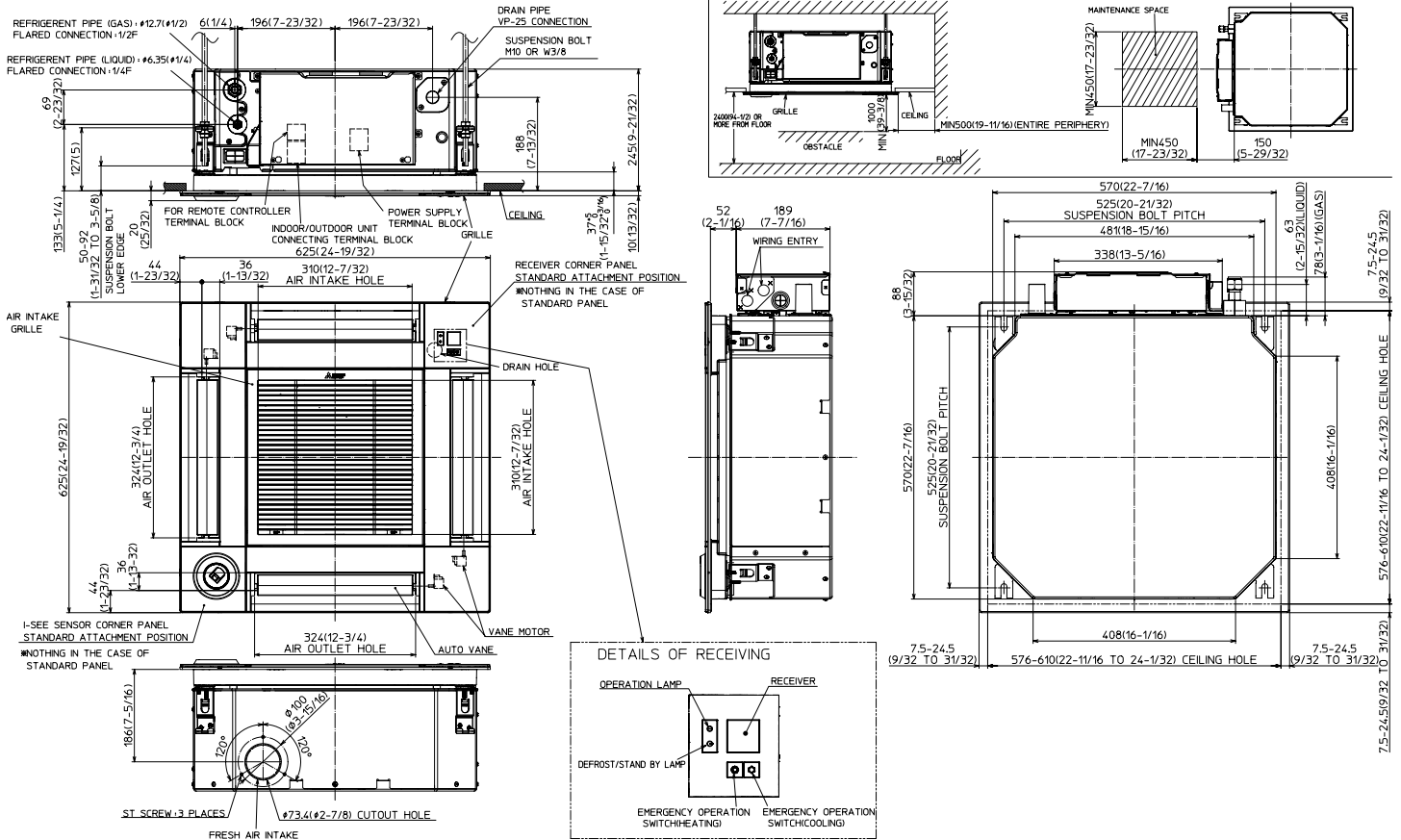
- 2' x 2' size matches size of many ceiling tiles
- 3D Turbo fan: 3D turbo fan enabling increased airflow
- 3D i-See sensor® settings requires the PAR-40MAAU controller
- 3D i-see Sensor® (Optional): *Requires a PAR-33MAA-J controller
- Airflow Pattern Selection: There are three outlet options available: bidirectional, three-way, and four-way—to fit different installation types.
- Built-in condensate lift: Reduces the need for an additional pump to remove condensate water; designed to provide up to 33" of lift
- Corner pocket design: Corner pocket design for simplified installation
- Energy saving features
- Four fan speed: Four fan speed settings including auto-fan
- Improved occupant comfort
- Independent Vane Angle Settings: Vane direction can be changed or fixed from the remote controller to direct the supply air toward or away from objects or occupants in the room. The airflow direction of each vane can be set using the wired remote controller or wireless remote controller (PAR-FL32MA).
- Occupancy Detection
- Square edge, sleek design
- Ventilation air intake supported

Specifications			System
Unit Type			PLFY-L15NFMU-A
Cooling Capacity (Nominal) ^{1,3}	Cooling Capacity (Nominal)	Btu/h	15,000
Heating Capacity (Nominal) ^{2,3}	Heating Capacity (Nominal)	Btu/h	17,000
Electrical	Voltage, Phase, Frequency	V AC / V AC, , Hz	208 / 230, 1, 60
	Power Consumption Cooling	kW	0.03
	Power Consumption Heating	kW	0.03
	Current Cooling	A	0.28
	Current Heating	A	0.23
	MCA	A	0.36
	MOCP	A	15
Indoor Unit	Fan Motor Type		DC Motor
	Fan Motor Output	W	50
	Airflow Rate at Cooling, Dry	CFM	265, 315, 390
	Airflow Rate at Heating, Dry	CFM	265, 315, 390
	Sound Pressure Level [Heating]	dB (A)	28, 33, 39
	DBC on HEX (Yes or No)		No
	External Finish Color		1.0Y 9.2/0.2
	Unit Dimensions (W x D x H)	inch x inch x inch [mm x mm x mm]	22-7/16 x 22-7/16 x 8-3/16 [570 x 570 x 208]
	Package Dimensions (W x D x H)	inch x inch x inch [mm x mm x mm]	28 x 24-7/16 x 9-8/16 [710 x 620 x 240]
Unit Weight	lbs [kg]	31.3 [14.20]	
Package Weight	lbs [kg]	37 [17]	
Refrigerant	Type		R454B
Piping	Liquid Pipe Size O.D. [Flared]	inch [mm]	1/4 [6.35]
	Gas Pipe Size O.D. [Flared]	inch [mm]	1/2 [12.7]
NOTES ¹ Cooling at 95°F (Indoor: 80°F DB, 67°F WB // Outdoor: 95°F DB, 75°F WB) ² Heating at 47°F (Indoor: 70°F DB, 60°F WB // Outdoor: 47°F DB, 43°F WB) ³ Nominal capacity only. Actual capacity output varies based on the system-specific configuration.			

INDOOR UNIT ACCESSORIES: PLFY-L15NFMU-A

Power Supplies & Auxiliary Components	3-Pin Wiring Harness	PAC-715AD
	5-Pin Wiring Harness	PAC-725AD
Wired Remote Controller	Deluxe Wired MA Remote Controller ¹	PAR-42MAAUB
	Simple Direct Wired Remote Controller	PAC-SDW01RC-1
	Simple MA Remote Controller ¹	PAC-YT53CRAU-J
	Smart ME Remote Controller	PAR-U01MEDU-K
	Touch MA Wired Remote Controller ¹	PAR-CT01MAU-SB
Power Supplies and Auxiliary Components	Backup Heat Relay Kit Adapter for CN24 or CN152 Connector	CN24RELAY-KIT-CM3
Remote Sensor	Flush Mount Remote Temperature Sensor for SEZ SLZ SVZ and all P-Series models	PAC-USSEN002-FM-1
	Wall Mount Remote Temperature Sensor	PAC-SE41TS-E
	Wireless temperature and humidity sensor for the Comfort app	PAC-USWHS003-TH-1
Wireless Remote Controller	Lockdown Bracket for Wireless Handheld Remote Controllers	RCMKP1CB
	RedLINK Wireless Remote Controller	MHK2
	Universal Wireless MA Handheld Remote Controller	PAR-FL32MA-E
	Universal Wireless Receiver for PAR-FL32MA-E	PAR-FA32MA-W
	Wireless Handheld Remote Controller for SLZ PLA and PLFY models	PAR-SL101A-E
	Wireless Receiver for PAR-SL101A-E on PLA-NL and PLFY-ELNEMU models	PAR-SR4LU-E
	Wireless Signal Receiver for PAR-SL101A-E on SLZ-AF and PLFY-NFMU models	PAR-SF9FA-E
Control Interface	Airzone Wired Blueface Controller Black	AZZBSBLUEZEROCN
	Airzone Wired Blueface Controller White	AZZBSBLUEZEROCB
	Airzone Wireless Lite Controller Black	AZZBSLITERN
	Airzone Wireless Lite Controller White	AZZBSLITERB
	Airzone Wireless Think Controller Black	AZZBSTHINKRN
	Airzone Wireless Think Controller White	AZZBSTHINKRB
	IT Extender for kumo station	PAC-WHS01IE-E
	kumo station for the Comfort app	PAC-WHS01HC-E
	Procon BACnet and Modbus Interface	PAC-UKPRC001-CN-1
	Thermostat Interface for 3rd Party Thermostats	PAC-US445CN-1
	Wireless Interface Adapter for the Comfort app	PAC-USWHS002-WF-2
i-see Sensor® Panel	3D i-See Sensor Corner Panel for PLFY-NFMU models	PAC-SF1ME-E
	3D i-See Sensor Grille	SLP-18FAEU
Condensate	Blue Diamond Advanced Mini Condensate Pump w Reservoir Sensor 208230V recommended	X87-721
	Blue Diamond MaxiBlue Advanced Mini Condensate Pump w Reservoir Sensor 110V up to 48000 BTUH recommended	X87-711
	Blue Diamond MegaBlue Advanced Condensate Pump w Reservoir Sensor	X87-835
	Blue Diamond MicroBlue Mini Condensate Pump 110208230V up to 18000 BTUH	X86-003
	Blue Diamond Sensor Extension Cable 15 Ft	C13-103
	Refco Condensate Pump 100-240 VAC up to 120000 BTUH	COMBI
Grille	Grille (required)	SLP-18FAU
NOTES		

INDOOR UNIT DIMENSIONS: PLFY-L15NFMU-A



1340 Satellite Boulevard Suwanee, GA 30024
 Toll Free: 800-433-4822 <https://mitsubishicomfort.com>



METUS_2025-02_PROPIN