

PKA-AK24NL & PUZ-AK24NLHZ
24,000 BTU/H WALL-MOUNTED INDOOR UNIT
24,000 BTU/H HYPER HEAT PUMP OUTDOOR UNIT



Job Name:

System Reference:

Date:



Indoor Unit.....PKA-AK24NL

Outdoor Unit.....PUZ-AK24NLHZ



INDOOR UNIT FEATURES

- Auto fan speed mode: Automatic adjustment of fan speed
- Ideal PKA spaces: Ideal for spaces such as server rooms, daycare centers, classrooms, churches, small offices, and more
- Light commercial: Units with this icon are suitable for light commercial applications such as small offices, restaurants, and retail.
- Multiple control options, including the comfort app for remote access, third-party interfaces, and both wired and wireless controllers
- Simple installation
- Single-zone: One outdoor unit connects to one indoor unit to control the comfort in a single space.
- Sleek, compact design
- Up and down swing-mode: An indoor unit with this capability can move air up and down throughout the room like an oscillating fan using the horizontal vanes.
- Vane settings: Vane setting for air flow direction control

OUTDOOR UNIT FEATURES

- Built-in base pan heater
- High Speed Start-up: High speed heating at start up: Hyper-Heating INVERTER® reduces the time for heating at start up by about half compared to standard models
- Hyper-Heating INVERTER®: Variable speed INVERTER-driven compressor
- Pre-charged refrigerant: volume for piping length up to 100 ft
- Pressure/temp protection
- Wide Heating Range: Wide heating range: heating performance down to -13°F (average of 80% heating capacity)

SPECIFICATIONS: PKA-AK24NL & PUZ-AK24NLHZ

| | | | |
|------------------------------------|---|--------------------------------------|---|
| Cooling at 95F ¹ | Maximum Capacity | Btu/h | 25,000 |
| | Rated Capacity | Btu/h | 24,000 |
| | Minimum Capacity | Btu/h | 1,360 |
| | Maximum Power Input | W | 173 |
| | Rated Power Input | W | 165 |
| | Moisture Removal | Pints/h | 7.8 |
| | Sensible Heat Factor | - | 0.6 |
| Heating at 47F ² | Power Factor [208V / 230V] | % | 96 / 96 |
| | Maximum Capacity | Btu/h | 28,000 |
| | Rated Capacity | Btu/h | 28,000 |
| | Minimum Capacity | Btu/h | 12,800 |
| | Maximum Power Input | W | 1,908 |
| | Rated Power Input | W | 1,908 |
| Heating at 17F ³ | Power Factor [208V / 230V] | % | 97 / 97 |
| | Maximum Capacity | Btu/h | 26,000 |
| | Rated Capacity | Btu/h | 17,000 |
| | Maximum Power Input | W | 4,340 |
| Heating at 5F ⁴ | Rated Power Input | W | 1,800 |
| | Maximum Capacity | Btu/h | 26,000 |
| Heating at -13F ⁵ | Maximum Power Input | W | 3,940 |
| | Maximum Capacity | Btu/h | 18,500 |
| Efficiency | SEER2 | | 21.8 |
| | EER2 ¹ | | 14.5 |
| | HSPF2 [IV] | | 9.4 |
| | COP at 47°F ² | | 4.3 |
| | COP at 17°F at Maximum Capacity ³ | | 1.7 |
| | COP at 5°F at Maximum Capacity ⁴ | | 1.9 |
| | COP at -13°F at Maximum Capacity ⁵ | | 1.88 |
| ENERGY STAR [®] Certified | | Yes | |
| Electrical | Voltage, Phase, Frequency | V AC / V AC, , Hz | 208 / 230, 1, 60 |
| | Guaranteed Voltage Range | V AC | 198 - 264 |
| | Voltage: Indoor - Outdoor, S1-S2 | V AC | 208/230 |
| | Voltage: Indoor - Outdoor, S2-S3 | V DC | 12-24 |
| | Short-circuit Current Rating [SCCR] | kA | 5 |
| | Recommended Fuse/Breaker Size (Outdoor) | A | 25 |
| | Recommended Wire Size [Indoor - Outdoor] | AWG | 14 |
| Indoor Unit | Fan Motor Output | W | 69 |
| | Airflow Rate at Cooling, Dry | CFM | 635, 705, 775 |
| | Airflow Rate at Heating, Dry | CFM | 635, 705, 775 |
| | Sound Pressure Level [Cooling] | dB (A) | 39, 42, 45 |
| | Sound Pressure Level [Heating] | dB (A) | 39, 42, 45 |
| | External Finish Color | | 0.7PB 9.2/0.4 |
| | Unit Dimensions (W x D x H) | inch x inch x inch [mm x mm x mm] | 46-1/16 x 11-5/8 x 14-3/8 [1,170 x 295 x 365] |
| | Package Dimensions (W x D x H) | inch x inch x inch [mm x mm x mm] | 51-3/16 x 14-3/16 x 18-9/16 [1,300 x 360 x 470] |
| | Unit Weight | lbs [kg] | 46 [21] |
| | Package Weight | lbs [kg] | 51 [23] |
| Fan Motor Type | | DC Motor | |
| IDU Operating Temp. Range | Cooling Intake Air Temp [Maximum / Minimum] | °FDB, °FWB / °FDB, °FWB | 90, 73 / 66, 59 |
| | Heating Intake Air Temp [Maximum / Minimum] | °FDB | 83 / 50 |

NOTES

¹Cooling at 95°F (Indoor: 80°F DB, 67°F WB // Outdoor: 95°F DB, 75°F WB)

²Heating at 47°F (Indoor: 70°F DB, 60°F WB // Outdoor: 47°F DB, 43°F WB)

³Heating at 17°F (Indoor: 70°F DB, 60°F WB // Outdoor: 17°F DB, 15°F WB)

⁴Heating at 5°F (Indoor: 70°F DB, 60°F WB // Outdoor: 5°F DB, 4°F WB)

⁵Heating at -13°F (Indoor: 70°F DB, 60°F WB // Outdoor: -13°F DB, -14°F WB)

*Indoor/Outdoor Unit Operating Temperature Range (Cooling Air Temp [Maximum / Minimum]):

• Wind baffles required to operate below 23°F DB in cooling mode.

• Heat pump system with wind baffle: 0°F - 115°F.

• Refer to wind baffle documentation for further information.

** Outdoor Unit Operating Temperature Range (Cooling Thermal Lock-out / Re-start Temperatures; Heating Thermal Lock-out / Re-start Temperatures):

• System cuts out in heating mode and automatically restarts at these temperatures.

SPECIFICATIONS: PKA-AK24NL & PUZ-AK24NLHZ

| | | | |
|---|--|--------------------------------------|---|
| Outdoor Unit | MCA | A | 24 |
| | MOCP | A | 39 |
| | Fan Motor Output | W | 74 |
| | Airflow Rate Cooling | CFM | 3,740 |
| | Airflow Rate Heating | CFM | 3,740 |
| | Defrost Method | | Reverse Cycle |
| | Coating on Heat Exchanger (Bluefin, Sea Coast) | | Yes, Yes |
| | Sound Pressure Level, Cooling ¹ | dB (A) | 52 |
| | Sound Pressure Level, Heating ² | dB (A) | 53 |
| | Compressor Type | | Twin Rotary |
| | Compressor Model | | MRK36FFGMC |
| | Compressor Oil [Type // Charge] | Type // oz | RM68EH // 45 |
| | External Finish Color | | Munsell No.3Y 7.8/1.1 |
| | Base Pan Heater | | Built-in |
| | Unit Dimensions (W x D x H) | inch x inch x inch [mm x mm x mm] | 41-11/32 x 14 x 52-43/64 [1,050 x 355 x 1,338] |
| | Package Dimensions (W x D x H) | inch x inch x inch [mm x mm x mm] | 42-15/16 x 17-3/4 x 58-5/16 [1,090 x 450 x 1,480] |
| | Unit Weight | lbs [kg] | 231 [105] |
| | Package Weight | lbs [kg] | 258 [117] |
| ODU Operating Temp. Range | Cooling Intake Maximum Air Temp [Maximum / Minimum*] | °FDB | 115 / 23 |
| | Heating Air Temp [Maximum / Minimum] | °FDB, °FWB / °FDB, °FWB | 70, 59 / -13, -13 |
| | Heating Thermal Lock-out / Re-start Temperatures** | °FDB | -22 / -13 |
| Refrigerant | Type | | R454B |
| | Pre-Charged Refrigerant Amount | lbs, oz | 9, 14 |
| | Maximum Pre-Charged Piping Length | ft [m] | 100 [30] |
| | Additional Refrigerant Charge Per Additional Piping Length | oz/ft | 0.6 |
| Piping | Gas Pipe Size O.D. [Flared] | inch [mm] | 5/8 [15.88] |
| | Liquid Pipe Size O.D. [Flared] | inch [mm] | 3/8 [9.52] |
| | Maximum Piping Length | ft [m] | 165 [50] |
| | Maximum Height Difference | ft [m] | 100 [30] |
| | Maximum Number of Bends | | 15 |
| NOTES ¹ Cooling at 95°F (Indoor: 80°F DB, 67°F WB // Outdoor: 95°F DB, 75°F WB) ² Heating at 47°F (Indoor: 70°F DB, 60°F WB // Outdoor: 47°F DB, 43°F WB) ³ Heating at 17°F (Indoor: 70°F DB, 60°F WB // Outdoor: 17°F DB, 15°F WB) ⁴ Heating at 5°F (Indoor: 70°F DB, 60°F WB // Outdoor: 5°F DB, 4°F WB) ⁵ Heating at -13°F (Indoor: 70°F DB, 60°F WB // Outdoor: -13°F DB, -14°F WB) *Indoor/Outdoor Unit Operating Temperature Range (Cooling Air Temp [Maximum / Minimum]): • Wind baffles required to operate below 23°F DB in cooling mode. • Heat pump system with wind baffle: 0°F - 115°F. • Refer to wind baffle documentation for further information. ** Outdoor Unit Operating Temperature Range (Cooling Thermal Lock-out / Re-start Temperatures; Heating Thermal Lock-out / Re-start Temperatures): • System cuts out in heating mode and automatically restarts at these temperatures. | | | |

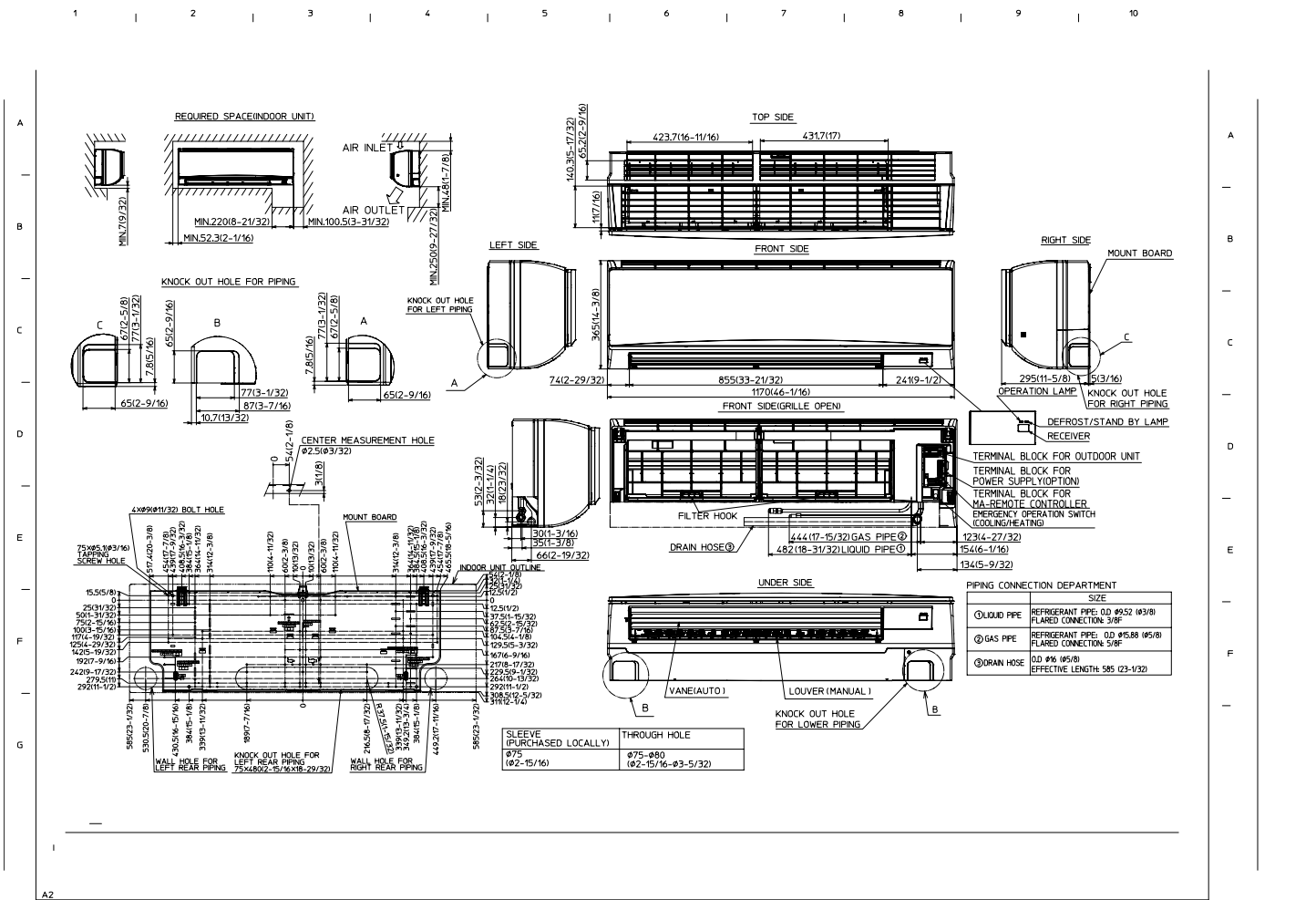
INDOOR UNIT ACCESSORIES: PKA-AK24NL

| | | |
|--|--|-------------------|
| Condensate | Blue Diamond Advanced Mini Condensate Pump w Reservoir Sensor 208230V recommended | X87-721 |
| | Blue Diamond MaxiBlue Advanced Mini Condensate Pump w Reservoir Sensor 110V up to 48000 BTUH recommended | X87-711 |
| | Blue Diamond MegaBlue Advanced Condensate Pump w Reservoir Sensor | X87-835 |
| | Blue Diamond Sensor Extension Cable 15 Ft | C13-103 |
| | Drain Pan Level SensorControl | SS610E |
| | Refco Condensate Pump 100-240 VAC | GOBI-II |
| | Refco Condensate Pump 100-240 VAC up to 120000 BTUH | COMBI |
| | Sauermann Condensate Pump | SI30-230 |
| Wired Remote Controller | Deluxe Wired MA Remote Controller ¹ | PAR-42MAAUB |
| | Simple Direct Wired Remote Controller | PAC-SDW01RC-1 |
| | Simple MA Remote Controller ¹ | PAC-YT53CRAU-J |
| | Touch MA Wired Remote Controller ¹ | PAR-CT01MAU-SB |
| Remote Sensor | Flush Mount Remote Temperature Sensor for SEZ SLZ SVZ and all P-Series models | PAC-USSEN002-FM-1 |
| | Wall Mount Remote Temperature Sensor | PAC-SE41TS-E |
| | Wireless temperature and humidity sensor for the Comfort app | PAC-USWHS003-TH-1 |
| Control Interface | Airzone Wired Blueface Controller Black | AZZBSBLUEZEROCN |
| | Airzone Wired Blueface Controller White | AZZBSBLUEZEROCB |
| | Airzone Wireless Lite Controller Black | AZZBSLITERN |
| | Airzone Wireless Lite Controller White | AZZBSLITERB |
| | Airzone Wireless Think Controller Black | AZZBSTHINKRN |
| | Airzone Wireless Think Controller White | AZZBSTHINKRB |
| | IT Extender for kumo station | PAC-WHS01IE-E |
| | kumo station for the Comfort app | PAC-WHS01HC-E |
| | Procon BACnet and Modbus Interface | PAC-UKPRC001-CN-1 |
| | Thermostat Interface for 3rd Party Thermostats | PAC-US445CN-1 |
| Wireless Interface Adapter for the Comfort app | PAC-USWHS002-WF-2 | |
| Lineset | 10 x 3/8 x 10 x 5/8 Lineset Twin-Tube Insulation | MPLS385812T-10 |
| | 100 x 3/8 x 100 x 5/8 Lineset Twin-Tube Insulation | MPLS385812T-100 |
| | 15 x 3/8 x 15 x 5/8 Lineset Twin-Tube Insulation | MPLS385812T-15 |
| | 30 x 3/8 x 30 x 5/8 Lineset Twin-Tube Insulation | MPLS385812T-30 |
| | 50 x 3/8 x 50 x 5/8 Lineset Twin-Tube Insulation | MPLS385812T-50 |
| | 65 x 3/8 x 65 x 5/8 Lineset Twin-Tube Insulation | MPLS385812T-65 |
| Mini-Split Wire | 14 Gauge 4 wire Armored MiniSplit Cable250 ft roll | SW144-250 |
| | 14 Gauge 4 wire Armored MiniSplit Cable50 ft roll | SW144-50 |
| Power Supplies & Auxiliary Components | 3-Pin Wiring Harness | PAC-715AD |
| | 5-Pin Wiring Harness | PAC-725AD |
| Disconnect Switch | 30A600VUL fits 2 X 4 utility box - Black | TAZ-MS303 |
| | 30A600VUL fits 2 X 4 utility box - White | TAZ-MS303W |
| Wireless Remote Controller | Lockdown Bracket for Wireless Handheld Remote Controllers | RCMKP1CB |
| | RedLINK Wireless Remote Controller | MHK2 |
| | Universal Wireless MA Handheld Remote Controller | PAR-FL32MA-E |
| | Universal Wireless Receiver for PAR-FL32MA-E | PAR-FA32MA-W |
| Power Supplies and Auxiliary Components | Backup Heat Relay Kit Adapter for CN24 or CN152 Connector | CN24RELAY-KIT-CM3 |
| Drain Hose | Flexible Mini-Split Drain Hose | DRX-16 |
| NOTES | | |

OUTDOOR UNIT ACCESSORIES: PUZ-AK24NLHZ

| | | |
|---------------------------------------|---|--|
| Stand | 18 Dual Fan Stand | QSMS1802M |
| | 24 Dual Fan Stand | QSMS2402M |
| | Condenser Wall Bracket | QSWB2000M-1 |
| | Condenser Wall Bracket - Stainless Steel Finish | QSWBSS |
| | Outdoor Unit 3-14 inch Mounting Base Pair - Plastic | DSD-400P |
| | Outdoor Unit Stand 12 High | QSMS1202M |
| Mounting Pad | Condensing Unit Mounting Pad 24 x 42 x 3 | ULTRILITE2 |
| Control/Service Tool | ControlService Tool | PAC-SK52ST |
| | M- & P-Series Maintenance Tool Cable Set | M21EC0397 |
| | Maintenance Tool Interface | PAC-USCMS-MN-1 |
| Snow/Rain Diverter | SnowRain Diverter | SRD-5 |
| Mini-Split Wire | 14 Gauge 4 wire Armored MiniSplit Cable250 ft roll | SW144-250 |
| | 14 Gauge 4 wire Armored MiniSplit Cable50 ft roll | SW144-50 |
| | 14 Gauge 4 wire MiniSplit Cable250 ft roll | S144-250 |
| | 14 Gauge 4 wire MiniSplit Cable50 ft roll | S144-50 |
| Power Supplies & Auxiliary Components | 3-Pin Wiring Harness | PAC-715AD |
| | 5-Pin Wiring Harness | PAC-725AD |
| Drain Socket | Drain Socket | PAC-SG61DS-E |
| Air Outlet Guide | Air Outlet Guide 1 Piece | PAC-SH96SG-E (two pieces are required) |
| Wind Baffle | Front Wind Baffle | WB-PA3 (two pieces are required) |
| M-NET Converter | M-Net Interface for P-Series | PAC-SJ95MA-E |
| Hail Guards | Hail Guard | HG-A2 |
| Centralized Drain Pan | Centralized Drain Pan | PAC-SH97DP-E |
| NOTES | | |

INDOOR UNIT DIMENSIONS: PKA-AK24NL



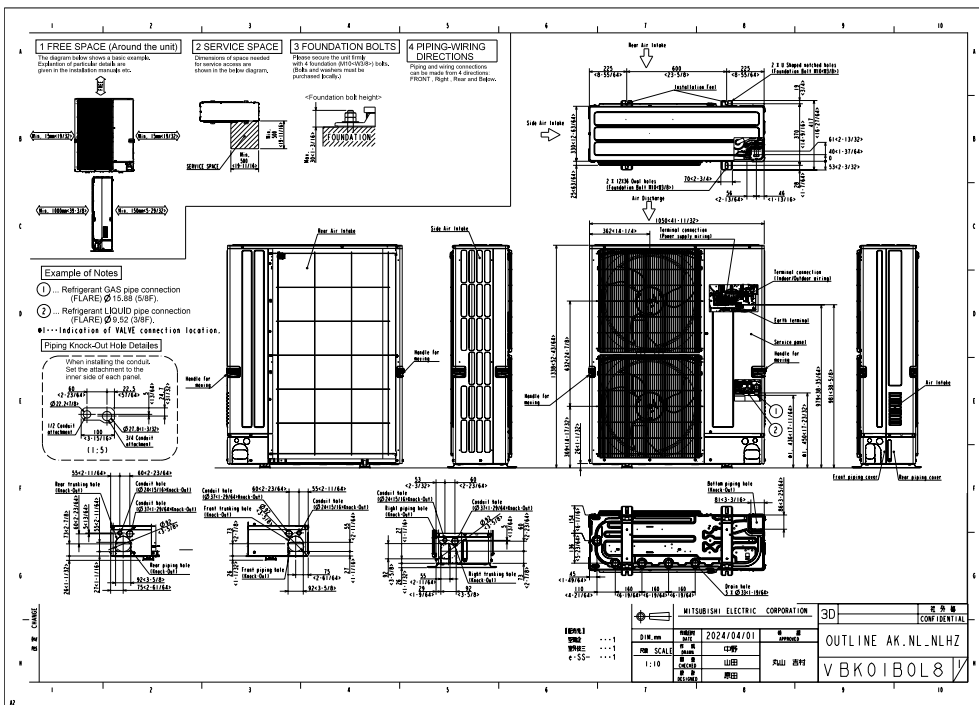
REVISION
 THE PAGE NO. ADDED

東芝エンジニアリング株式会社
 3D-FUNCTION DESIGN
 3D-APR-2024
 SHITSUNAIZO
 S-SAITO
 NAKAJIMA
 K.FUKUDA
 K.OBARA

CHECK G
 MITSUBISHI ELECTRIC CORPORATION
 DATE: 30-APR-2024
 DRAWN: S-SAITO
 CHECKED: NAKAJIMA
 DESIGNED: K.FUKUDA
 APPROVED: K.OBARA

3D
 CONFIDENTIAL
 OUTLINE
 VVK01B875
 PKA-AK24/30/36NL
 TR-LADA024/030/036KALDA
 MODEL NAME

OUTDOOR UNIT DIMENSIONS: PUZ-AK24NLHZ



1340 Satellite Boulevard Suwanee, GA 30024
Toll Free: 800-433-4822 <https://mitsubishicomfort.com>

