

# MODEL: PAC-LMA30BC AND PAC-LMA50BC R-454B BRANCH BOX



Job Name:

System Reference:

Date:



PAC-LMA30BC



PAC-LMA50BC

## SPECIFICATIONS

Model Name				PAC-LMA50BC	PAC-LMA30BC
Connectable number of indoor units				Maximum 5	Maximum 3
Power supply				Single phase, 208/230 VAC, 60 Hz	
Input		kW		0.003	
Running current		A		0.15	
External finish				Galvanized steel	
Dimensions	Width		Inch (mm)	17-3/4 (450)	
	Depth		Inch (mm)	11-1/16 (280)	
	Height		Inch (mm)	6-3/4 (170)	
Package Dimensions	Width		Inch (mm)	24-7/16 (620)	
	Depth		Inch (mm)	20-1/8 (510)	
	Height		Inch (mm)	8-5/16 (210)	
Weight			lb (kg)	16.0 (7.4)	15.0 (6.7)
Piping Connection (Flare)	Branch (indoor side)*	Liquid	Inch (mm)	ø1/4 (6.35) x 5 {A,B,C,D,E}	
		Gas	Inch (mm)	ø3/8 (9.52) x 4 {A,B,C,D}, ø1/2 (12.7) x 1{E}	
	Main (outdoor side)	Liquid	Inch (mm)	ø3/8 (9.52)	
		Gas	Inch (mm)	ø5/8 (15.88)	

\*The piping connection size differs according to the type of and capacity of indoor units. Match the piping connection size for indoor and branch box. If the piping connection size of the branch does not match the piping connection size of the indoor units, use optional different-diameter (deformed) joints to the branch box side. (Connect deformed joint directly to the branch box side.)

## ACCESSORIES

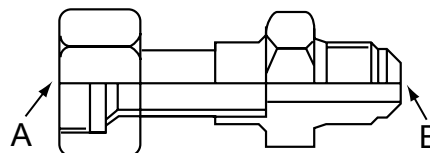
BBE-1	Branch Box Enclosure
ADP3812	Port Adapter
PAC-SK88RJ-E	Port Adapter
PAC-SK89RJ-E	Port Adapter
PAC-493PI	Port Adapter
PAC-SK90RJ-E	Port Adapter
ADP5834	Port Adapter
MSDD-50AR2-E	Flare connection distribution pipe
MSDD-50BR-E	Brazed connection distribution pipe

## NOTES:

For the MXZ-SM60 outdoor unit:

- When connecting the outdoor unit to the branch box directly, the reduction in pipe size must be made at the branch box using the port adaptor: ADP5834 (5/8"F x 3/4"M).
- When connecting the outdoor unit to the distribution pipe (MSDD-50AR2-E, for using 2 branch boxes), the reduction in pipe size must be made at the distribution pipe using the port adaptor: ADP5834 (5/8"F x 3/4"M).

## OPTIONAL PORT ADAPTORS



Model name	Connected pipes diameter	Diameter A	Diameter B
	Inch, mm	Inch, mm	Inch, mm
ADP3812	3/8, ø9.52 → 1/2, ø12.7	3/8, ø9.52	1/2, ø12.7
PAC-SK88RJ-E	1/2, ø12.7 → 3/8, ø9.52	1/2, ø12.7	3/8, ø9.52
PAC-SK89RJ-E	1/2, ø12.7 → 5/8, ø15.88	1/2, ø12.7	5/8, ø15.88
PAC-493PI	1/4, ø6.35 → 3/8, ø9.52	1/4, ø6.35	3/8, ø9.52
PAC-SK90RJ-E	3/8, ø9.52 → 5/8, ø15.88	3/8, ø9.52	5/8, ø15.88
ADP5834	5/8, ø15.88 → 3/4, ø19.05	5/8, ø15.88	3/4, ø19.05

# DIMENSIONS: PAC-LMA30BC

## PAC-LMA30BC (3-BRANCHES TYPE)

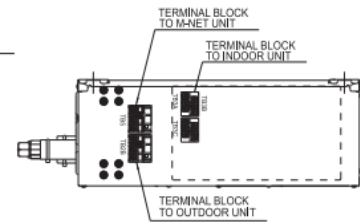
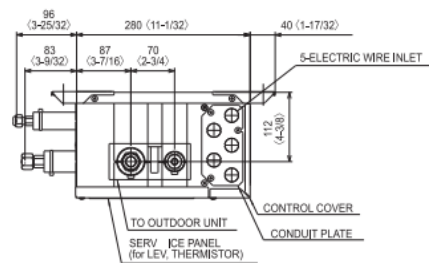
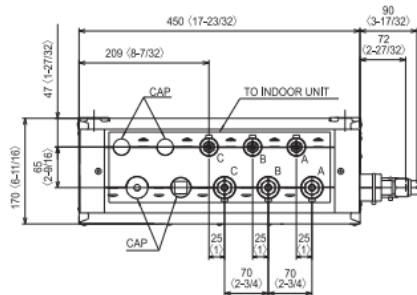
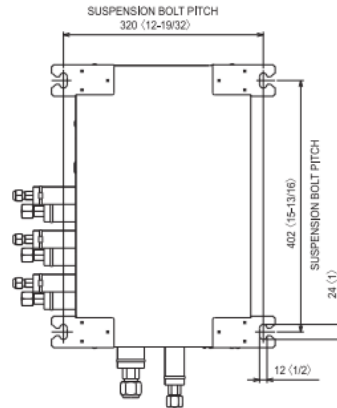
Suspension bolt: W3/8 (M10)  
Refrigerant pipe flared connection

inch, mm

	To indoor unit			To outdoor unit
	A	B	C	
Liquid pipe	1/4, ø6.35	1/4, ø6.35	1/4, ø6.35	3/8, ø9.52
Gas pipe	3/8, ø9.52	3/8, ø9.52	3/8, ø9.52	5/8, ø15.88

Conversion formula	
3/8F	ø9.52
5/8F	ø15.88

Unit: mm (inch)



# DIMENSIONS: PAC-LMA50BC

## PAC-LMA50BC (5-BRANCHES TYPE)

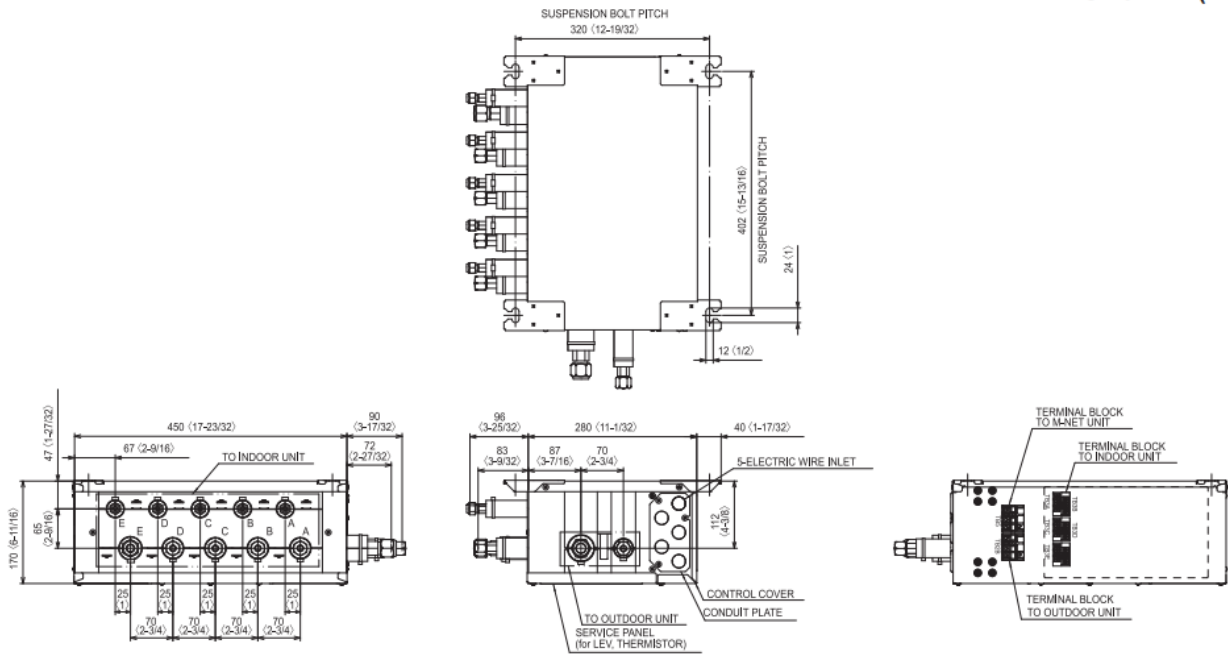
Suspension bolt: W3/8 (M10)  
Refrigerant pipe flared connection

inch, mm

	To indoor unit					To outdoor unit
	A	B	C	D	E	
Liquid pipe	1/4, ø6.35	1/4, ø6.35	1/4, ø6.35	1/4, ø6.35	1/4, ø6.35	3/8, ø9.52
Gas pipe	3/8, ø9.52	3/8, ø9.52	3/8, ø9.52	3/8, ø9.52	1/2, ø12.7	5/8, ø15.88

Conversion formula	
1/4F	ø6.35
3/8F	ø9.52
1/2F	ø12.7
5/8F	ø15.88
3/4F	ø19.05

Unit: mm (inch)



1340 Satellite Boulevard, Suwanee, GA 30024  
Toll Free: 800-433-4822  
[www.mitsubishicomfort.com](http://www.mitsubishicomfort.com)

Specifications are subject to change without notice.

© 2025 Mitsubishi Electric Trane HVAC US LLC. All rights reserved.