

PAA-AA24NL & PUY-AH24NL
23,600 BTU/H CASD COIL INDOOR UNIT
23,600 BTU/H COOLING ONLY OUTDOOR UNIT



Job Name:

System Reference:

Date:



INDOOR Unit ... PAA-AA24NL
OUTDOOR Unit ... PUY-AH24NL

INDOOR UNIT FEATURES

- **Furnace Compatible:** Compatible with most gas furnaces, intelli-HEAT® allows for Intelligent Switchover between the furnace and heat pump operation.
*Mitsubishi Electric air-conditioner and heat pump systems should only be connected with ANSI-Z21.47/CSA2.3 certified furnaces
- **Intelligent Switchover:** Intelligent Switchover from electric heat pump to gas furnace operation in extreme cold for consistent comfort. The system can also be set to switch based optimal energy efficiency and to reduce your carbon footprint.
- **High Quality Drain Pan:** High quality drain pan material with high heat tolerance and low moisture absorption
- **Multi-Position Installation:** Versatile installation options, including horizontal (left or right) and vertical (up or down) orientations, with included drain pans to facilitate easy setup for any configuration.
- **Available Widths:** Available in 14.5", 17.5", and 21" widths

OUTDOOR UNIT FEATURES

- **Inverter Driven Compressor:** Inverter technology uses only the precise amount of energy needed to keep a space comfortable.
- **Blue Fin Coating:** Anti-corrosion coating that protects the outdoor heat exchanger against salt, sulfur, and other airborne contaminants that impact the efficiency and performance of the outdoor units.
- **Seacoast Protection:** Designed to protect against the corrosive effects of environments that are in close proximity to the sea.

SPECIFICATIONS: PAA-AA24NL & PUY-AH24NL

Cooling at 95F ¹	Maximum Capacity	Btu/h	24000
	Rated Capacity	Btu/h	23600
	Minimum Capacity	Btu/h	9800
	Maximum Power Input	W	2010
	Rated Power Input	W	1960
	Moisture Removal	Pints/h	5.70
	Sensible Heat Factor		0.75
Efficiency	Power Factor [208V / 230V]	%	86 / 86
	SEER2		17.8
	EER2 ¹		12
Electrical	ENERGY STAR® Certified		Yes
	Voltage, Phase, Frequency	V AC / V AC , ϕ , Hz	208 / 230 , 1 , 60
	Guaranteed Voltage Range	V AC	198 - 253
	Voltage: Indoor - Outdoor, S1-S2	V AC	208/230
	Voltage: Indoor - Outdoor, S2-S3	V DC	12-24
	Short-circuit Current Rating [SCCR]	kA	5
	Recommended Fuse/Breaker Size (Outdoor)	A	25
Indoor Unit	Recommended Wire Size [Indoor - Outdoor]	AWG	14
	MCA	A	0.2
	Rated Airflow, Dry	CFM	700
	Maximum Airflow, Dry	CFM	830
	Minimum Airflow, Dry	CFM	551
	Internal Static Pressure [at Rated CFM]	in.WG	0.2
	Drain Pipe Size O.D.	inch [mm]	3/4 [19.05]
	Unit Dimensions (W x D x H)	inch x inch x inch [mm x mm x mm]	14-1/2 x 21-7/16 x 27-1/2 [368 x 543 x 697]
	Package Dimensions (W x D x H)	inch x inch x inch [mm x mm x mm]	17-7/16 x 25-5/16 x 33 [443 x 695 x 838]
	Unit Weight [Cased Coil Only]	lbs [kg]	59.5 [27.0]
	Control Box Weight	lbs [kg]	5.1 [2.3]
IDU Operating Temp. Range	Package Weight	lbs [kg]	82.7 [37.5]
	Cooling Intake Air Temp [Maximum / Minimum]	deg F , deg F / deg F , deg F	90 , 73 / 66 , 59
Outdoor Unit	MCA	A	22
	MOCP	A	37
	Fan Motor Output	W	74
	Airflow Rate Cooling	CFM	1940
	Coating on Heat Exchanger (Bluefin, Sea Coast)		Yes , Yes
	Sound Pressure Level, Cooling ¹	dB (A)	49
	Compressor Type		Twin Rotary
	Compressor Model		SRB172FQHMC-L1
	Compressor Oil [Type // Charge]	// oz	RM68EH // 23
	External Finish Color		Munsell 3Y 7.8/1.1
	Unit Dimensions (W x D x H)	inch x inch x inch [mm x mm x mm]	37-13/32 x 14 x 37-1/8 [950 x 355 x 943]
ODU Operating Temp. Range	Package Dimensions (W x D x H)	inch x inch x inch [mm x mm x mm]	41-15/16 x 17-3/4 x 42-1/2 [1065 x 450 x 1079]
	Unit Weight	lbs [kg]	155 [70]
	Package Weight	lbs [kg]	179 [81]
Refrigerant	Cooling Intake Air Temp [Maximum / Minimum*]	F	115 / 23
	Type		R454B
	Pre-Charged Refrigerant Amount	lbs , oz	7 , 11
Piping	Maximum Pre-Charged Piping Length	ft [m]	100 [30]
	Gas Pipe Size O.D. [Flared]	inch [mm]	5/8 [15.88]
	Liquid Pipe Size O.D. [Flared]	inch [mm]	3/8 [9.52]
	Maximum Piping Length	ft [m]	100 [30]
	Maximum Height Difference	ft [m]	100 [30]
	Maximum Number of Bends		15
Notes			

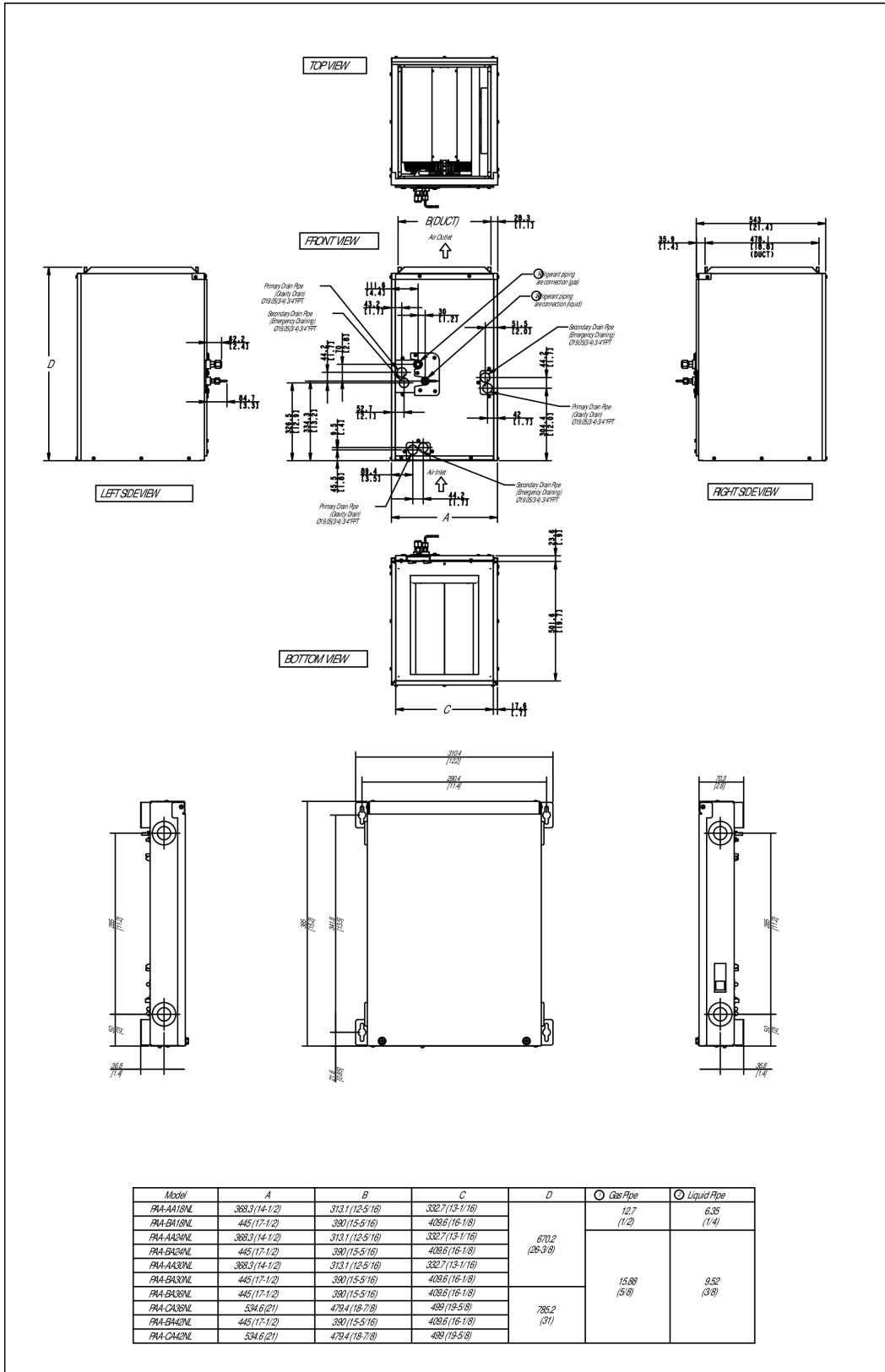
INDOOR UNIT ACCESSORIES: PAA-AA24NL

Condensate	Sauermann Condensate Pump 120-230V up to 60k BTU/h	<input type="checkbox"/>	SI30-230
	Blue Diamond Sensor Extension Cable 15 Ft	<input type="checkbox"/>	C13-103
	Blue Diamond (MaxiBlue Advanced) Mini Condensate Pump w/ Reservoir & Sensor (110V) up to 48,000 BTU/H [recommended]	<input type="checkbox"/>	X87-711
	Blue Diamond MegaBlue Condensate Pump with Reservoir Sensor 115-230V up to 170k BTU/h	<input type="checkbox"/>	X87-835
	Blue Diamond MaxiBlue Condensate Pump with Reservoir Sensor 115-230V up to 48k BTU/h	<input type="checkbox"/>	X88-721
	Refco Condensate Pump 100-240V up to 120k BTU/h	<input type="checkbox"/>	COMBI
Control Interface	Procon BACnet® and Modbus® Interface	<input type="checkbox"/>	PAC-UKPRC001-CN-1
	Operation and Error Status Output Adapter ¹	<input type="checkbox"/>	PAC-SF40RM-E
	Wireless Interface 2 for Comfrot app	<input type="checkbox"/>	PAC-USWHS002-WF-2
	kumo station® for Comfort app	<input type="checkbox"/>	PAC-WHS01HC-E
	IT Extender	<input type="checkbox"/>	PAC-WHS01IE-E
	Thermostat Interface	<input type="checkbox"/>	PAC-US446CN-1
Disconnect Switch	(30A/600V/UL) [fits 2" X 4" utility box] - White	<input type="checkbox"/>	TAZ-MS303W
	30A600VUL fits 2 X 4 utility box - Black	<input type="checkbox"/>	TAZ-MS303
Lineset	3/8 x 5/8 Lineset Twin-Tube Insulation - 30 feet	<input type="checkbox"/>	MPLS385812T-30
	3/8 x 5/8 Lineset Twin-Tube Insulation - 100 feet	<input type="checkbox"/>	MPLS385812T-100
	3/8 x 5/8 Lineset Twin-Tube Insulation - 50 feet	<input type="checkbox"/>	MPLS385812T-50
	3/8 x 5/8 Lineset Twin-Tube Insulation - 10 feet	<input type="checkbox"/>	MPLS385812T-10
	3/8 x 5/8 Lineset Twin-Tube Insulation - 65 feet	<input type="checkbox"/>	MPLS385812T-65
	3/8 x 5/8 Lineset Twin-Tube Insulation - 15 feet	<input type="checkbox"/>	MPLS385812T-15
N/A		<input type="checkbox"/>	Unknown
Power Supplies & Auxiliary Components	ERV On/Off Input Adapter for CNER on SVZ PEAD and PVA models	<input type="checkbox"/>	PAC-740
Remote Sensor	Wall Mounted Remote Temperature Sensor	<input type="checkbox"/>	PAC-SE41TS-E
	Wireless temperature and humidity sensor for Comfort app	<input type="checkbox"/>	PAC-USWHS003-TH-1
	Flush Mount Remote Temperature Sensor for SEZ SLZ SVZ and all P-Series models	<input type="checkbox"/>	PAC-USSEN002-FM-1
Terminal Signal Adapter	Backup Heat Relay Kit	<input type="checkbox"/>	CN24RELAY-KIT-CM3
	5-Pin Wiring Harness	<input type="checkbox"/>	PAC-725AD
	3-Pin Wiring Harness	<input type="checkbox"/>	PAC-715AD
Wired Remote Controller	Deluxe MA Wired Remote Controller	<input type="checkbox"/>	PAR-42MAAUB
	Simple Direct Wired Remote Controller	<input type="checkbox"/>	PAC-SDW01RC-1
	Touch MA Remote Controller	<input type="checkbox"/>	PAR-CT01MAU-SB
	Simple MA Remote Controller	<input type="checkbox"/>	PAC-YT53CRAU-J
Wireless Remote Controller	Universal Wireless Receiver for PAR-FL32MA-E	<input type="checkbox"/>	PAR-FA32MA-E
	Universal Wireless Receiver for PAR-FL32MA-E	<input type="checkbox"/>	PAR-FA32MA-W
	Lockdown Bracket for Wireless Handheld Remote Controllers	<input type="checkbox"/>	RCMKP1CB
	Wireless Remote Controller	<input type="checkbox"/>	PAR-SL101A-E
	Wireless RedLINK™ Remote Controller	<input type="checkbox"/>	MHK2
Notes			

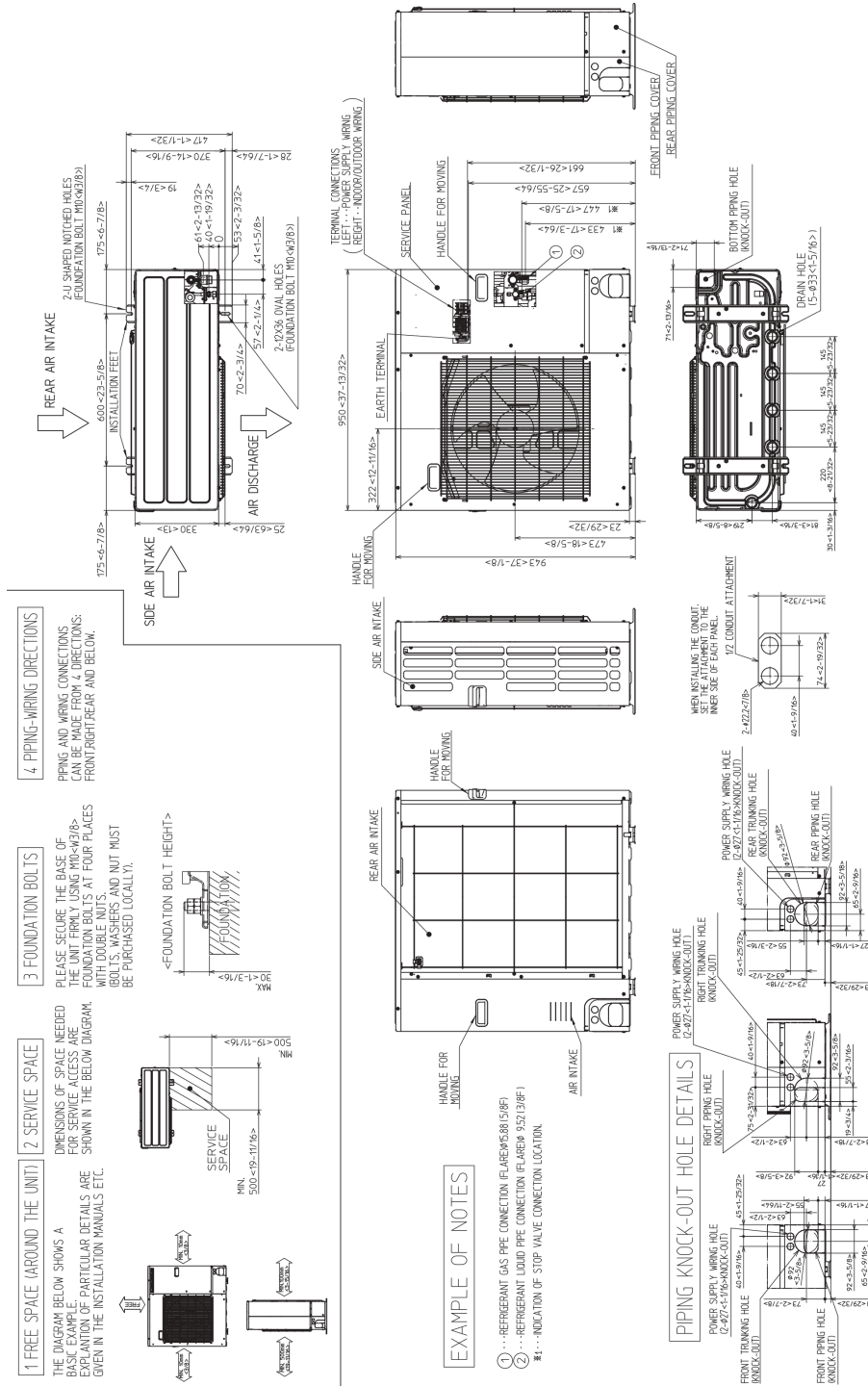
OUTDOOR UNIT ACCESSORIES: PUY-AH24NL

Air Outlet Guide	Air Outlet Guide 1 Piece	<input type="checkbox"/>	PAC-SG59SG-E
Centralized Drain Pan	Centralized Drain Pan	<input type="checkbox"/>	PAC-SG64DP-E
Control/Service Tool	M- & P-Series Maintenance Tool Cable Set	<input type="checkbox"/>	M21EC0397
	ControlService Tool	<input type="checkbox"/>	PAC-SK52ST
	Maintenance Tool Interface	<input type="checkbox"/>	PAC-USCMS-MN-1
Drain Socket	Drain Socket	<input type="checkbox"/>	PAC-SG61DS-E
Hail Guards	Hail Guard	<input type="checkbox"/>	HG-A6
M-NET Converter	M-Net Interface for P-Series	<input type="checkbox"/>	PAC-SJ95MA-E
Mini-Split Wire	14 Gauge 4 wire MiniSplit Cable50 ft roll	<input type="checkbox"/>	S144-50
	14 Gauge 4 wire Armored MiniSplit Cable50 ft roll	<input type="checkbox"/>	SW144-50
	14 Gauge 4 wire MiniSplit Cable250 ft roll	<input type="checkbox"/>	S144-250
	14 Gauge 4 wire Armored MiniSplit Cable250 ft roll	<input type="checkbox"/>	SW144-250
Mounting Pad	Condensing Unit Mounting Pad 24 x 42 x 3	<input type="checkbox"/>	ULTRILITE2
Snow/Rain Diverter	SnowRain Diverter	<input type="checkbox"/>	SRD-4
Stand	Condenser Wall Bracket - Stainless Steel Finish	<input type="checkbox"/>	QSWBSS
	Outdoor Unit Stand 12 High	<input type="checkbox"/>	QSMS1201M
	Outdoor Unit 3-14 inch Mounting Base Pair - Plastic	<input type="checkbox"/>	DSD-400P
	Condenser Wall Bracket	<input type="checkbox"/>	QSWB2000M-1
	18 Single Fan Stand	<input type="checkbox"/>	QSMS1801M
	24 Single Fan Stand	<input type="checkbox"/>	QSMS2401M
Terminal Signal Adapter	3-Pin Wiring Harness	<input type="checkbox"/>	PAC-715AD
	5-Pin Wiring Harness	<input type="checkbox"/>	PAC-725AD
Wind Baffle	Rear Wind Baffle	<input type="checkbox"/>	WB-RE5
	Front Wind Baffle	<input type="checkbox"/>	WB-PA5
	Side Advanced Wind Baffle	<input type="checkbox"/>	WB-SD5
Notes			

INDOOR UNIT DIMENSIONS: PAA-AA24NL



OUTDOOR UNIT DIMENSIONS: PUY-AH24NL



1340 Satellite Boulevard Suwanee, GA 30024
Toll Free: 800-433-4822 · mitsubishicomfort.com

METUS_2026-04_PROPIN

