

Simple Direct Wired Remote Controller

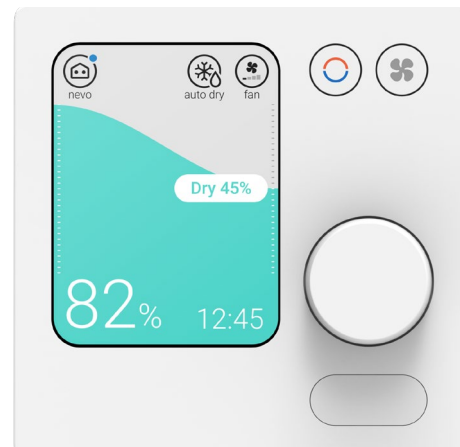
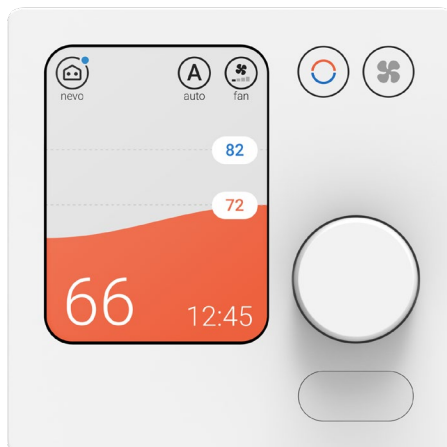
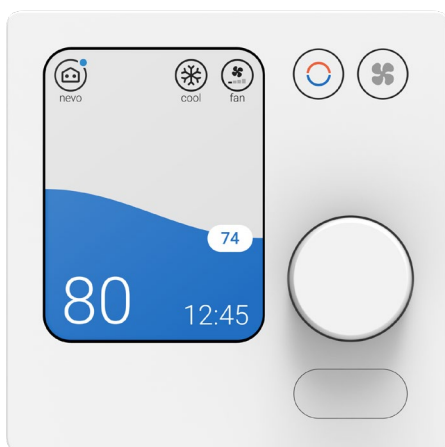
PAC-SDW01RC-2



Job Name:

System Reference:

Date:



NEW Features for SDW01-2

- Now compatible with the Comfort app
 - Connects to the red connector on the Wireless Interface 2 or the CN105 connector on units with built-in Wi-Fi
 - Setting ISU 134 must be set to "Installed" for compatibility, Auto Mode and Scheduling will be removed from the SDW settings menu and only be configurable in the Comfort app
- When connecting to ducted models the SDW will automatically set the indoor unit fan to turn off when set point is met
- Min/max set point limits automatically set by model type
- New setting ISU 201 adds PAA settings to the main menu
 - Configure operation of G/W/Y terminals when integrating a (de)humidifier or ventilation unit, and controls the behavior of indoor unit connectors CN25, CN2C, and CNER
 - Displays whether the furnace changeover setting is "Extended" or "Balanced"
- New menu layout with a more intuitive flow
- Several wording changes to increase clarity
- Error codes now reappear after being snoozed

All Features for SDW01-1 & SDW01-2

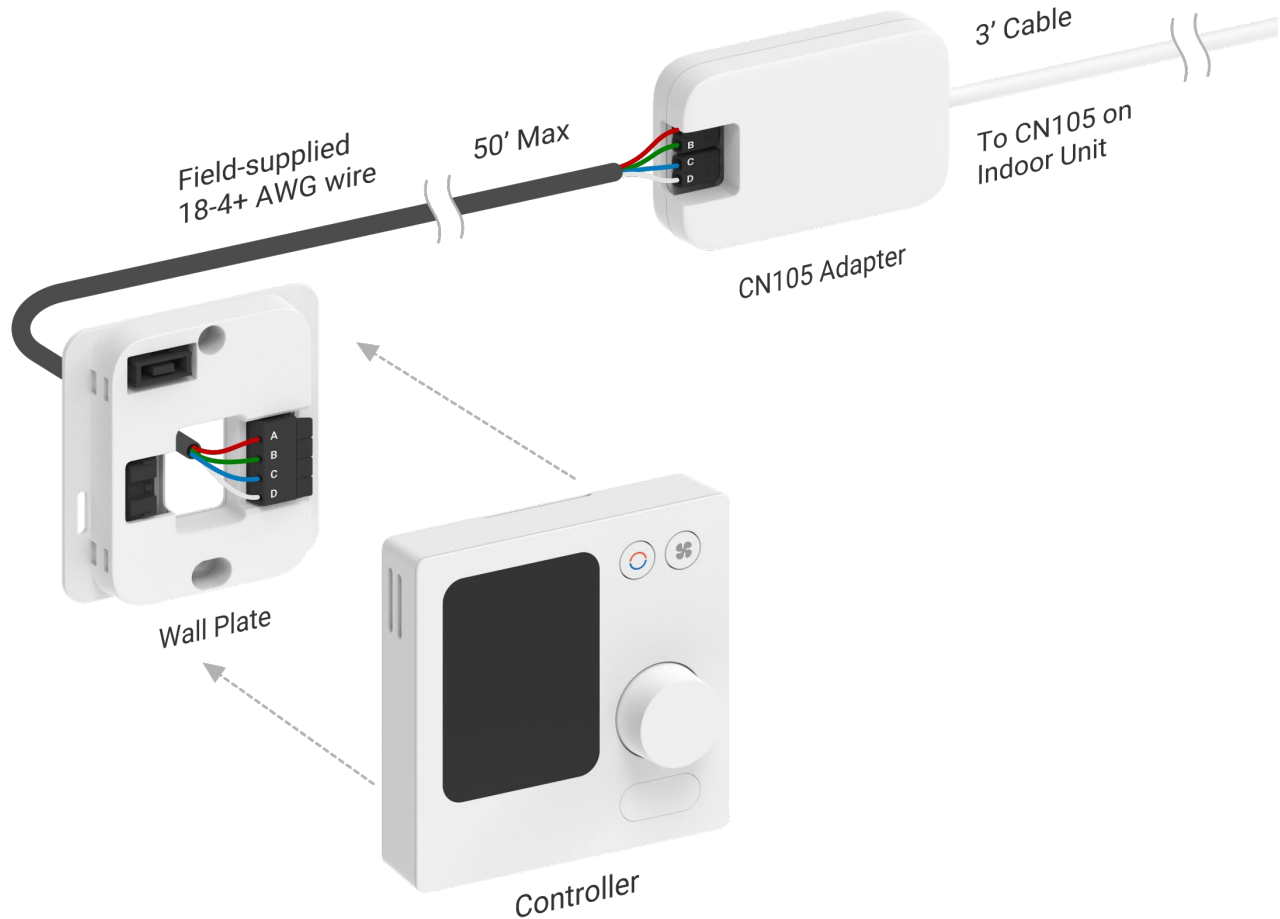
- Wired connection to indoor unit with CN105 cable adapter
 - Use field-supplied 18-4 AWG wire on new installs ^{*1}
 - Use existing thermostat wire on swap outs
 - Auto Dry function to help regulate humidity in the space ^{*2}
 - System automatically switches between Cool and Dry mode to meet the target humidity level within the allowable offsets
 - Select relative humidity level between 35% to 75%
 - Select temperature offset below set point 2° to 4°F
 - Select temperature offset above set point 2° to 10°F
 - 7-day scheduling with customizable presets
 - Residential presets: Comfort, Away, Sleep
 - Commercial presets: Morning, Midday, Evening, Night
 - Temporary or permanent schedule override (hold)
 - Holiday Override feature for planned schedule overrides
 - Multiple lockout functions:
 - Child Lock: No settings can be changed
 - Comfort Lock: Only temperature can be adjusted
 - ISU Lock: Individual settings can be locked
 - Colored screen with adjustable brightness
 - Adjustable min/max set point limits for Cool, Heat, and Auto
 - Displays and records error codes with written descriptions
 - Room temperature and humidity offset for unique applications
 - Proximity sensor to wake controller screen when walking by
 - Mode and Fan button for quick changes
 - Built-in temperature and humidity sensor
 - Control one indoor unit at a time (1:1 only, no group control)
 - Configure advanced indoor unit and controller settings
 - Function Codes 1-28 for advanced indoor unit settings
 - ISU options 134-202 for advanced controller settings
 - Control all standard indoor unit functions:
 - Operation modes: Auto, Cool, Heat, Dry, Fan, Off
 - Temperature set point (dual set points for Auto)
 - Fan speed
 - Airflow direction
 - Temperature set point range limits
 - Set point ranges vary based on the indoor unit model type (see Application Note 3059 for details)
 - Controller dimensions: 3-3/8" x 3-3/8" x 1" (86 x 86 x 23 mm)
 - Adapter dimensions: 3" x 1-4/5" x 5/8" (74 x 46 x 16 mm)
 - Operating Ambient Temperature: 14° to 120° F (-10° to 49° C)
 - Operating Relative Humidity: 5% to 90% (non-condensing)
 - Compatible with all current indoor unit models:
 - All M-Series
 - All P-Series
 - All CITY MULTI
- ^{*1} Minimum of 4 conductors, 18-22 AWG required.
- ^{*2} Moisture removal rates vary based on the indoor unit model and size. See the indoor unit engineering manual for details.

Simple Direct Wired Remote Controller

PAC-SDW01RC-2



Installation Diagram

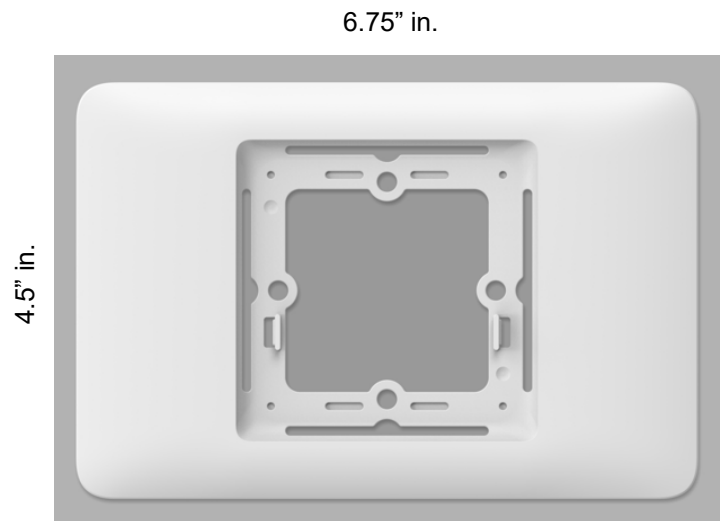


Optional Wall Plate Accessory

SOLD SEPARATELY

Specifications

- Compatible with all SDW models
- Part #: PAC-SDW-WP-80PK
- Box includes 80 Wall Plates
- Each Wall Plate sleeve come with:
 - x1 decorative plastic wall plate
 - x1 metal wall plate mount
 - x3 mounting screws
 - x1 scannable barcode for individual sales



PAC-SDW-WP-80PK

Simple Direct Wired Remote Controller

PAC-SDW01RC-2



The Comfort App

Feature Overview

- Allows for a Mitsubishi Electric indoor unit to be controlled remotely or locally with the Comfort app
- Simplified user interface and modern graphics
- Interactive onboarding wizard to help first-time users
- Custom naming of all zones, groups, and sites.
- Organize indoor units into Groups for batch control and Auto Changeover with multi-zone outdoor units
- Issues reported through the app now go directly to our dev team so they can develop targeted solutions at a faster rate
- Improved Wi-Fi connection
 - Stronger and more reliable connection to all indoor units
 - Connect multiple indoor units at the same time
 - In-app troubleshooting steps to help with connection issues
- Create seasonal schedules for both indoor units and groups
 - Create separate schedules for Summer and Winter
 - Utilize Comfort scheduling profiles with preset settings
 - Includes temporary and permanent Hold functions
 - Note: Schedules will not appear on the SDW screen
- Control auxiliary equipment with the kumo station™
 - Backup Heat: 2nd & 3rd staging, indoor and outdoor unit temperature limits, fan interlock
 - Ventilation/ERV: Minutes per hour, hours per day
 - (De)humidifiers: Indoor RH% setpoints and limits

How to Connect the SDW

- For indoor units with a built-in Wi-Fi, connect to the CN105 connector on the indoor unit control board.
- For indoor units that do not have built-in Wi-Fi, connect to the red plug labeled "TO ACCY" on the Wireless Interface adapter (PAC-USWHS002-WF-2 sold separately).

Important Notes

- SDW setting ISU 134 must be set to "Installed" in order to work with the Comfort app. After changing this setting, Auto Mode and Scheduling will be removed from the SDW settings menu and will only be configurable in the Comfort app.
- When Auto mode is enabled through the Comfort app, the SDW can only be used to change Fan speed and Vane direction. Do not use the SDW to change Mode or Setpoint.
- The SDW and Comfort app can take up to 5 minutes to sync.

Comfort App Resources



Scan for FAQ &
Troubleshooting Tips



Scan to Download
the Comfort app

