

# PEFY-L18NMSU-A

## 18,000 BTU/H LOW STATIC HORIZONTAL-DUCTED INDOOR UNIT



Job Name:

System Reference:

Date:



### GENERAL FEATURES

- 7-7/8" (200 mm) high for low ceiling heights
- Auto fan mode
- Built-in condensate lift; lifts to 21-11/16" (550 mm)
- Dual set point functionality
- Multiple fan speed settings

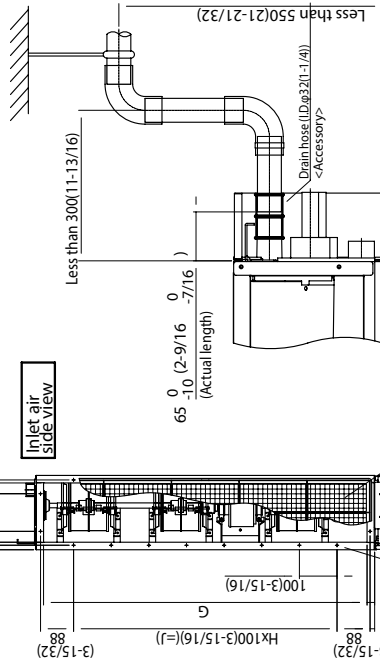
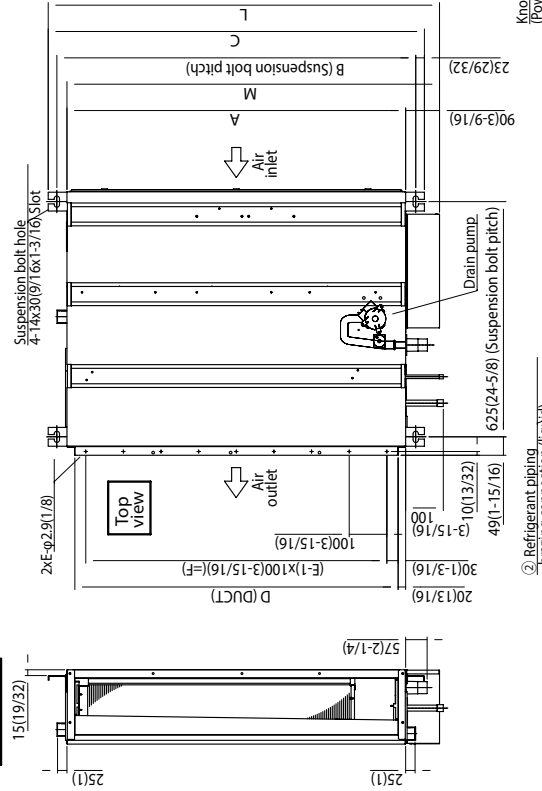
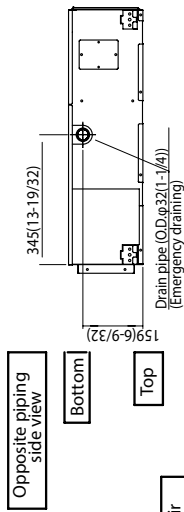
Specifications			System
Unit Type			PEFY-L18NMSU-A
Cooling Capacity (Nominal) <sup>1,3</sup>	Cooling Capacity (Nominal)	Btu/h	18,000
Heating Capacity (Nominal) <sup>2,3</sup>	Heating Capacity (Nominal)	Btu/h	20,000
Electrical	Voltage, Phase, Frequency	V AC / V AC, ø, Hz	208 / 230, 1, 60
	MCA	A	1.35
	MOCP	A	15
Indoor Unit	Fan Motor Type		DC Motor
	Fan Motor Output	W	96
	Airflow Rate at Cooling, Dry	CFM	353, 441, 529
	Airflow Rate at Heating, Dry	CFM	353, 441, 529
	Sound Pressure Level [Cooling]	dB (A)	30, 34, 37
	Sound Pressure Level [Heating]	dB (A)	30, 34, 37
	External Static Pressure	in.WG	0.02, 0.06, 0.14, 0.20
	DBC on HEX (Yes or No)		No
	Unit Dimensions (W x D x H)	inch x inch x inch [mm x mm x mm]	39 x 27-9/16 x 7-7/8 [990 x 700 x 200]
	Package Dimensions (W x D x H)	inch x inch x inch [mm x mm x mm]	47-1/4 x 35-7/16 x 14-3/16 [1,200 x 900 x 360]
Unit Weight	lbs [kg]	53 [24]	
Package Weight	lbs [kg]	76 [34.50]	
Refrigerant	Type		R454B
Piping	Liquid Pipe Size O.D.	inch [mm]	1/4 [6.35]
	Gas Pipe Size O.D.	inch [mm]	1/2 [12.7]
Drain Pipe	Drain Pipe Size O.D.	inch [mm]	1-1/4 [32]
<b>NOTES</b> <sup>1</sup> Cooling at 95°F (Indoor: 80°F DB, 67°F WB // Outdoor: 95°F DB, 75°F WB) <sup>2</sup> Heating at 47°F (Indoor: 70°F DB, 60°F WB // Outdoor: 47°F DB, 43°F WB) <sup>3</sup> Nominal capacity only. Actual capacity output varies based on the system-specific configuration.			

## INDOOR UNIT ACCESSORIES: PEFY-L18NMSU-A

Remote Sensor	Flush Mount Remote Temperature Sensor for SEZ SLZ SVZ and all P-Series models	PAC-USSEN002-FM-1
	Wall Mount Remote Temperature Sensor	PAC-SE41TS-E
	Wireless temperature and humidity sensor for the Comfort app	PAC-USWHS003-TH-1
Wireless Remote Controller	Lockdown Bracket for Wireless Handheld Remote Controllers	RCMKP1CB
	RedLINK Wireless Remote Controller	MHK2
	Universal Wireless MA Handheld Remote Controller	PAR-FL32MA-E
	Universal Wireless Receiver for PAR-FL32MA-E	PAR-FA32MA-W
Lineset	100 x 1/4 x 100 1/2 Lineset Twin-Tube Insulation	MLS141212T-100
	15 x 1/4 x 15 1/2 Lineset Twin-Tube Insulation	MLS141212T-15
	30 x 1/4 x 30 1/2 Lineset Twin-Tube Insulation	MLS141212T-30
	50 x 1/4 x 50 1/2 Lineset Twin-Tube Insulation	MLS141212T-50
	65 x 1/4 x 65 1/2 Lineset Twin-Tube Insulation	MLS141212T-65
Control Interface	Airzone Wired Blueface Controller Black	AZZBSBLUEZEROCN
	Airzone Wired Blueface Controller White	AZZBSBLUEZEROCB
	Airzone Wired Lite Controller Black	AZZBSLITECN
	Airzone Wired Lite Controller White	AZZBSLITECB
	Airzone Wireless Lite Controller Black	AZZBSLITERN
	Airzone Wireless Lite Controller White	AZZBSLITERB
	Airzone Wireless Think Controller Black	AZZBSTHINKRN
	Airzone Wireless Think Controller White	AZZBSTHINKRB
	IT Extender for kumo station	PAC-WHS01IE-E
	kumo station for the Comfort app	PAC-WHS01HC-E
	Procon BACnet and Modbus Interface	PAC-UKPRC001-CN-1
	Thermostat Interface for 3rd Party Thermostats	PAC-US445CN-1
	Wireless Interface Adapter for the Comfort app	PAC-USWHS002-WF-2
Condensate	Blue Diamond Advanced Mini Condensate Pump w Reservoir Sensor 208230V recommended	X87-721
	Blue Diamond MaxiBlue Advanced Mini Condensate Pump w Reservoir Sensor 110V up to 48000 BTUH recommended	X87-711
	Blue Diamond MegaBlue Advanced Condensate Pump w Reservoir Sensor	X87-835
	Blue Diamond MicroBlue Mini Condensate Pump 110208230V up to 18000 BTUH	X86-003
	Blue Diamond MultiTank collection tank for use with multiple pumps	C21-014
	Blue Diamond Sensor Extension Cable 15 Ft	C13-103
	Refco Condensate Pump 100-240 VAC up to 120000 BTUH	COMBI
	Sauermann Condensate Pump	SI30-230
Power Supplies & Auxiliary Components	3-Pin Wiring Harness	PAC-715AD
	5-Pin Wiring Harness	PAC-725AD
Wired Remote Controller	Deluxe Wired MA Remote Controller	PAR-42MAAUB
	Simple Direct Wired Remote Controller	PAC-SDW01RC-1
	Simple MA Remote Controller <sup>1</sup>	PAC-YT53CRAU-J
	Smart ME Remote Controller	PAR-U01MEDU-K
	Touch MA Wired Remote Controller <sup>1</sup>	PAR-CT01MAU-SB
Filter Box	Filter Box with MERV 8 Filter	FBL1-2
Power Supplies and Auxiliary Components	Backup Heat Relay Kit Adapter for CN24 or CN152 Connector	CN24RELAY-KIT-CM3
Control Wire	202PR 1PR shielded 1PR plenum wire for Airzone 100 ft reel	CW2042S2-100
	202PR shielded 1PR plenum wire for Airzone 500 ft reel	CW2042S2-500
<b>NOTES</b> <sup>1</sup> Requires MAC-334IF-E Interface to connect MA controller <sup>1</sup> Requires MAC-334IF-E Interface to connect MA controller <sup>1</sup> Requires MAC-334IF-E Interface to connect MA controller		

# INDOOR UNIT DIMENSIONS: PEFY-L18NMSU-A

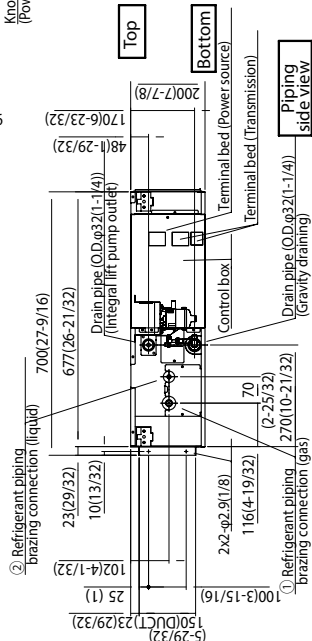
Model	A	B	C	D	E	F	G	H	J	K	L	M	① Gas pipe	② Liquid pipe
PEFY-L06NMSU-A	700	752	798	660	600	600	660	500	500	16	839	790	φ12.7	φ6.35
PEFY-L06NMSU-A	(27-9/16)	(29-5/8)	(31-7/16)	(26)	(23-5/8)	(23-5/8)	(26)	(19-1/16)	(19-1/16)	(1/2)	(31-1/8)	(31-1/8)		(1/4)
PEFY-L12NMSU-A	900	952	998	860	800	800	860	700	700	20	1039	990	φ12.7	φ6.35
PEFY-L12NMSU-A	(35-7/16)	(37-1/2)	(39-5/16)	(33-7/8)	(31-1/2)	(31-1/2)	(33-7/8)	(27-9/16)	(27-9/16)	(3/4)	(40-29/32)	(39)		(1/4)
PEFY-L18NMSU-A	1100	1152	1198	1060	1000	1000	1060	900	900	24	1239	1190	φ12.7	φ6.35
PEFY-L18NMSU-A	(43-5/16)	(45-3/8)	(47-3/16)	(41-3/4)	(39-3/8)	(39-3/8)	(41-3/4)	(35-7/16)	(35-7/16)	(3/4)	(48-25/32)	(46-7/8)		(3/8)
PEFY-L24NMSU-A	1300	1352	1398	1260	1200	1200	1260	1100	1100	28	1439	1390	φ12.7	φ6.35
PEFY-L24NMSU-A	(51-5/16)	(53-3/8)	(55-3/16)	(49-3/4)	(47-3/8)	(47-3/8)	(49-3/4)	(43-7/16)	(43-7/16)	(7/8)	(52-29/32)	(50-7/8)		(3/8)



- Note 1. Use M10 screw for the suspension bolt (field supply).
- Note 2. Keep the service space for the maintenance at the bottom.
- Note 3. This chart indicates for PEFY-L15-18NMSU-A models, which have 3 fans. PEFY-L06-08-12NMSU-A models have 2 fans. PEFY-L24NMSU-A model have 4 fans.
- Note 4. In case of the inlet duct is used, remove the air filter (supply with the unit), then install the filter (field supply) at suction side.

本図面の所有権は三菱電機株式会社にある。  
THIS DOCUMENT IS THE PROPERTY OF MITSUBISHI ELECTRIC CORPORATION.

作成日付 AS/SD	改定日付 AS/SD
2024-06-13	
図面番号 DWG. NO.	外部寸法 EXTERNAL DIMENSION
MITSUBISHI ELE-TRN-C-RP-RATT-N	PEFY-L06-08-12-15-18-24NMSU-A
スケール SCALE	1/2
REV.	1/2



1340 Satellite Boulevard Suwanee, GA 30024  
Toll Free: 800-433-4822 <https://mitsubishicomfort.com>

