

PAA-AA30NL & SUZ-AK30NLHZ
30,000 BTU/H CASD COIL INDOOR UNIT
30,000 BTU/H HYPER HEAT PUMP OUTDOOR UNIT



Job Name:

System Reference:

Date:



INDOOR Unit ... PAA-AA30NL
OUTDOOR Unit ... SUZ-AK30NLHZ

INDOOR UNIT FEATURES

- **Furnace Compatible:** Compatible with most gas furnaces, intelli-HEAT® allows for Intelligent Switchover between the furnace and heat pump operation.
*Mitsubishi Electric air-conditioner and heat pump systems should only be connected with ANSI-Z21.47/CSA2.3 certified furnaces
- **Intelligent Switchover:** Intelligent Switchover from electric heat pump to gas furnace operation in extreme cold for consistent comfort. The system can also be set to switch based optimal energy efficiency and to reduce your carbon footprint.
- **High Quality Drain Pan:** High quality drain pan material with high heat tolerance and low moisture absorption
- **Multi-Position Installation:** Versatile installation options, including horizontal (left or right) and vertical (up or down) orientations, with included drain pans to facilitate easy setup for any configuration.
- **Available Widths:** Available in 14.5", 17.5", and 21" widths

OUTDOOR UNIT FEATURES

- **H2i® Hyper-Heating:** 100% heating performance down to 5° F with guaranteed heating down to -13° F.
- **Inverter Driven Compressor:** Inverter technology uses only the precise amount of energy needed to keep a space comfortable.
- **Blue Fin Coating:** Anti-corrosion coating that protects the outdoor heat exchanger against salt, sulfur, and other airborne contaminants that impact the efficiency and performance of the outdoor units.
- **Base Pan Heater:** This advanced base pan heater helps to prevent interrupted operation due to water freezing after a defrost cycle, ensuring your warmth and comfort during colder weather.
- **Seacoast Protection:** Designed to protect against the corrosive effects of environments that are in close proximity to the sea.
- **Flash Injection:** Flash Injection enables optimum compressor performance when it is running at higher speeds to maintain indoor comfort during cold temperatures.

SPECIFICATIONS: PAA-AA30NL & SUZ-AK30NLHZ

Cooling at 95F ¹	Maximum Capacity	Btu/h	31000
	Rated Capacity	Btu/h	30000
	Minimum Capacity	Btu/h	15800
	Maximum Power Input	W	2630
	Rated Power Input	W	2550
	Moisture Removal	Pints/h	7.60
	Sensible Heat Factor		0.74
Heating at 47F ²	Maximum Capacity	Btu/h	35800
	Rated Capacity	Btu/h	35800
	Minimum Capacity	Btu/h	14900
	Maximum Power Input	W	3000
	Rated Power Input	W	3000
	Power Factor [208V / 230V]	%	90 / 90
Heating at 17F ³	Maximum Capacity	Btu/h	32000
	Rated Capacity	Btu/h	26600
	Maximum Power Input	W	4940
	Rated Power Input	W	3120
Heating at 5F ⁵	Maximum Capacity	Btu/h	32000
Heating at -13F ⁹	Maximum Capacity	Btu/h	4670
Efficiency	Maximum Capacity	Btu/h	23000
	SEER2		17.10
	EER2 ¹		11.70
	HSPF2 [IV]		8.50
	COP at 47°F ²		3.5
	COP at 17°F at Maximum Capacity ³		1.80
	COP at 5°F at Maximum Capacity ⁵		2
	COP at -13°F at Maximum Capacity ⁹		1.86
ENERGY STAR® Certified		Yes	
Electrical	Voltage, Phase, Frequency	V AC / V AC , Hz	208 / 230 , 1 , 60
	Guaranteed Voltage Range	V AC	198 - 253
	Voltage: Indoor - Outdoor, S1-S2	V AC	208/230
	Voltage: Indoor - Outdoor, S2-S3	V DC	12-24
	Short-circuit Current Rating [SCCR]	kA	5
	Recommended Fuse/Breaker Size (Outdoor)	A	30
	Recommended Wire Size [Indoor - Outdoor]	AWG	14
Indoor Unit	MCA	A	0.2
	Rated Airflow, Dry	CFM	875
	Maximum Airflow, Dry	CFM	1024
	Minimum Airflow, Dry	CFM	700
	Internal Static Pressure [at Rated CFM]	in.WG	0.2
	Drain Pipe Size O.D.	inch [mm]	3/4 [19.05]
	Unit Dimensions (W x D x H)	inch x inch x inch [mm x mm x mm]	14-1/2 x 21-7/16 x 27-1/2 [368 x 543 x 697]
	Package Dimensions (W x D x H)	inch x inch x inch [mm x mm x mm]	17-7/16 x 25-5/16 x 33 [443 x 695 x 838]
	Unit Weight [Cased Coil Only]	lbs [kg]	58.4 [26.5]
	Control Box Weight	lbs [kg]	5.1 [2.3]
Package Weight	lbs [kg]	81.6 [37.0]	
IDU Operating Temp. Range	Cooling Intake Air Temp [Maximum / Minimum]	deg F , deg F / deg F , deg F	90 , 73 / 66 , 59
	Heating Intake Air Temp [Maximum / Minimum]	deg F	83 / 50
Outdoor Unit	MCA	A	29
	MOCP	A	48
	Fan Motor Output	W	74+74
	Airflow Rate Cooling	CFM	3740
	Airflow Rate Heating	CFM	3740
	Defrost Method		Reverse Cycle
Notes			

SPECIFICATIONS: PAA-AA30NL & SUZ-AK30NLHZ

Outdoor Unit	Coating on Heat Exchanger (Bluefin, Sea Coast)		Yes , Yes
	Sound Pressure Level, Cooling ¹	dB (A)	52
	Sound Pressure Level, Heating ²	dB (A)	53
	Compressor Type		Twin Rotary
	Compressor Model		MRK36FFGMC
	Compressor Oil [Type // Charge]	// oz	RM68EH // 45
	External Finish Color		Munsell No.3Y 7.8/1.1
	Base Pan Heater		Built-in
	Unit Dimensions (W x D x H)	inch x inch x inch [mm x mm x mm]	41-11/32 x 14 x 52-43/64 [1050 x 355 x 1338]
	Package Dimensions (W x D x H)	inch x inch x inch [mm x mm x mm]	42-15/16 x 17-3/4 x 58-5/16 [1090 x 450 x 1480]
	Unit Weight	lbs [kg]	231 [105]
	Package Weight	lbs [kg]	258 [117]
	ODU Operating Temp. Range	Cooling Intake Air Temp [Maximum / Minimum*]	F
Heating Intake Air Temp [Maximum / Minimum]		F , F / F , F	70 , 59 / -13 , -13
Heating Thermal Lock-out / Re-start Temperatures**		F	-22 / -13
Refrigerant	Type		R454B
	Pre-Charged Refrigerant Amount	lbs , oz	9 , 14
	Maximum Pre-Charged Piping Length	ft [m]	100 [30]
	Additional Refrigerant Charge Per Additional Piping Length	oz/ft	0.6
Piping	Gas Pipe Size O.D. [Flared]	inch [mm]	5/8 [15.88]
	Liquid Pipe Size O.D. [Flared]	inch [mm]	3/8 [9.52]
	Maximum Piping Length	ft [m]	100 [30]
	Maximum Height Difference	ft [m]	100 [30]
	Maximum Number of Bends		15
Notes			

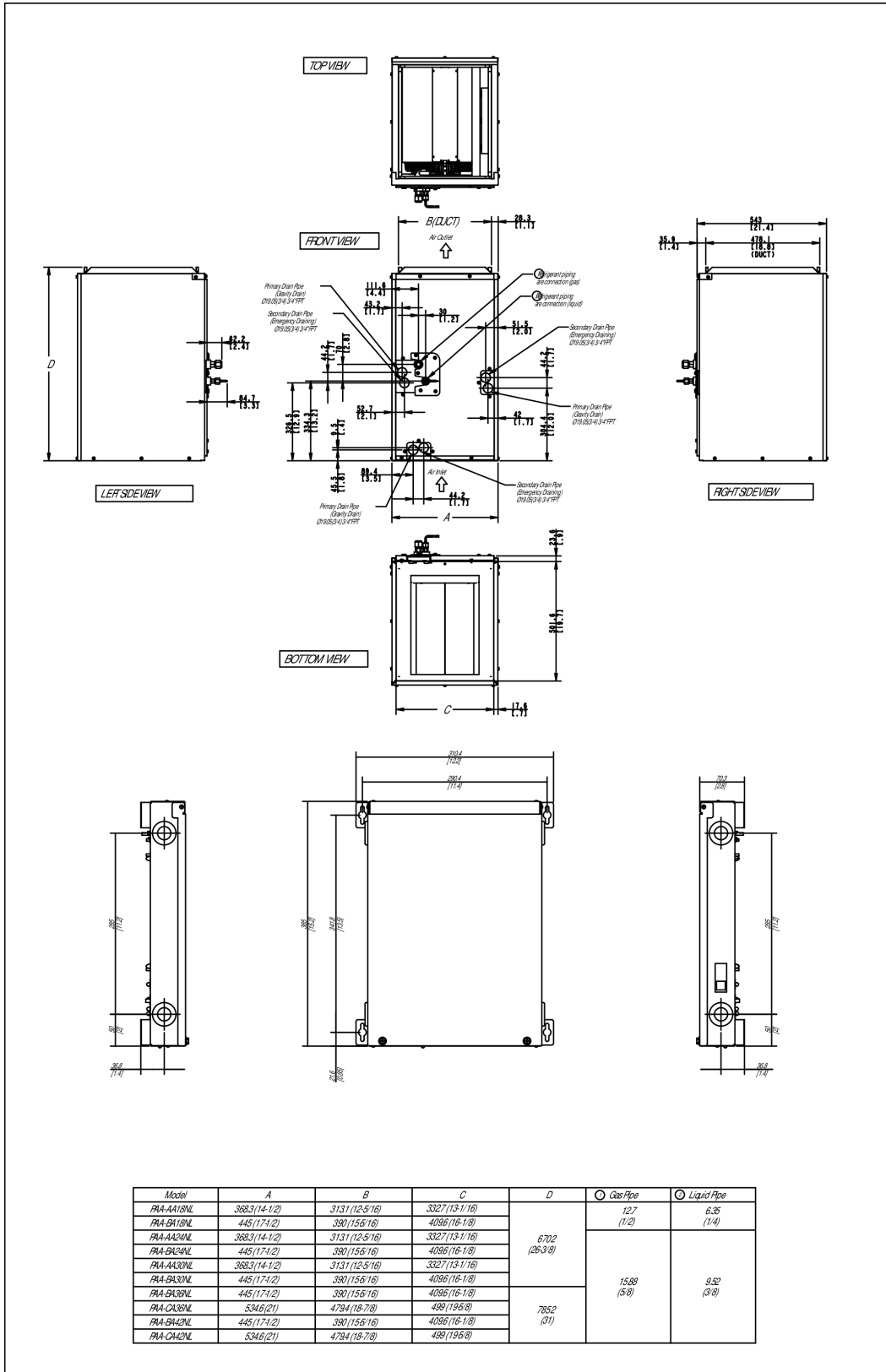
INDOOR UNIT ACCESSORIES: PAA-AA30NL

Condensate	Blue Diamond Sensor Extension Cable 15 Ft	<input type="checkbox"/> C13-103
	Blue Diamond Advanced Mini Condensate Pump w Reservoir Sensor 208230V recommended	<input type="checkbox"/> X88-721
	Sauermann Condensate Pump 120-230V up to 60k BTU/h	<input type="checkbox"/> SI30-230
	Refco Condensate Pump 100-240V up to 120k BTU/h	<input type="checkbox"/> COMBI
	Blue Diamond MegaBlue Condensate Pump with Reservoir Sensor 115-230V up to 170k BTU/h	<input type="checkbox"/> X87-835
	Blue Diamond (MaxiBlue Advanced) Mini Condensate Pump w/ Reservoir & Sensor (110V) up to 48,000 BTU/H [recommended]	<input type="checkbox"/> X87-711
Control Interface	Procon BACnet® and Modbus® Interface	<input type="checkbox"/> PAC-UKPRC001-CN-1
	IT Extender	<input type="checkbox"/> PAC-WHS01IE-E
	Wireless Interface 2 for Comfrot app	<input type="checkbox"/> PAC-USWHS002-WF-2
	kumo station® for Comfort app	<input type="checkbox"/> PAC-WHS01HC-E
	Thermostat Interface	<input type="checkbox"/> PAC-US446CN-1
	Operation and Error Status Output Adapter ¹	<input type="checkbox"/> PAC-SF40RM-E
Disconnect Switch	30A600VUL fits 2 X 4 utility box - Black	<input type="checkbox"/> TAZ-MS303
	(30A/600V/UL) [fits 2" X 4" utility box] - White	<input type="checkbox"/> TAZ-MS303W
Lineset	3/8 x 5/8 Lineset Twin-Tube Insulation - 30 feet	<input type="checkbox"/> MPLS385812T-30
	3/8 x 5/8 Lineset Twin-Tube Insulation - 10 feet	<input type="checkbox"/> MPLS385812T-10
	3/8 x 5/8 Lineset Twin-Tube Insulation - 50 feet	<input type="checkbox"/> MPLS385812T-50
	3/8 x 5/8 Lineset Twin-Tube Insulation - 65 feet	<input type="checkbox"/> MPLS385812T-65
	3/8 x 5/8 Lineset Twin-Tube Insulation - 100 feet	<input type="checkbox"/> MPLS385812T-100
	3/8 x 5/8 Lineset Twin-Tube Insulation - 15 feet	<input type="checkbox"/> MPLS385812T-15
Power Supplies & Auxiliary Components	ERV On/Off Input Adapter for CNER on SVZ PEAD and PVA models	<input type="checkbox"/> PAC-740
Remote Sensor	Wireless temperature and humidity sensor for Comfort app	<input type="checkbox"/> PAC-USWHS003-TH-1
	Flush Mount Remote Temperature Sensor for SEZ SLZ SVZ and all P-Series models	<input type="checkbox"/> PAC-USSEN002-FM-1
	Wall Mounted Remote Temperature Sensor	<input type="checkbox"/> PAC-SE41TS-E
Terminal Signal Adapter	5-Pin Wiring Harness	<input type="checkbox"/> PAC-725AD
	3-Pin Wiring Harness	<input type="checkbox"/> PAC-715AD
	Backup Heat Relay Kit	<input type="checkbox"/> CN24RELAY-KIT-CM3
Wired Remote Controller	Touch MA Remote Controller	<input type="checkbox"/> PAR-CT01MAU-SB
	Simple Direct Wired Remote Controller	<input type="checkbox"/> PAC-SDW01RC-1
	Deluxe MA Wired Remote Controller	<input type="checkbox"/> PAR-42MAAUB
	Simple MA Remote Controller	<input type="checkbox"/> PAC-YT53CRAU-J
Wireless Remote Controller	Universal Wireless Receiver for PAR-FL32MA-E	<input type="checkbox"/> PAR-FA32MA-E
	Lockdown Bracket for Wireless Handheld Remote Controllers	<input type="checkbox"/> RCMKP1CB
	Wireless RedLINK™ Remote Controller	<input type="checkbox"/> MHK2
	Wireless Remote Controller	<input type="checkbox"/> PAR-SL101A-E
	Universal Wireless Receiver for PAR-FL32MA-E	<input type="checkbox"/> PAR-FA32MA-W
Notes		

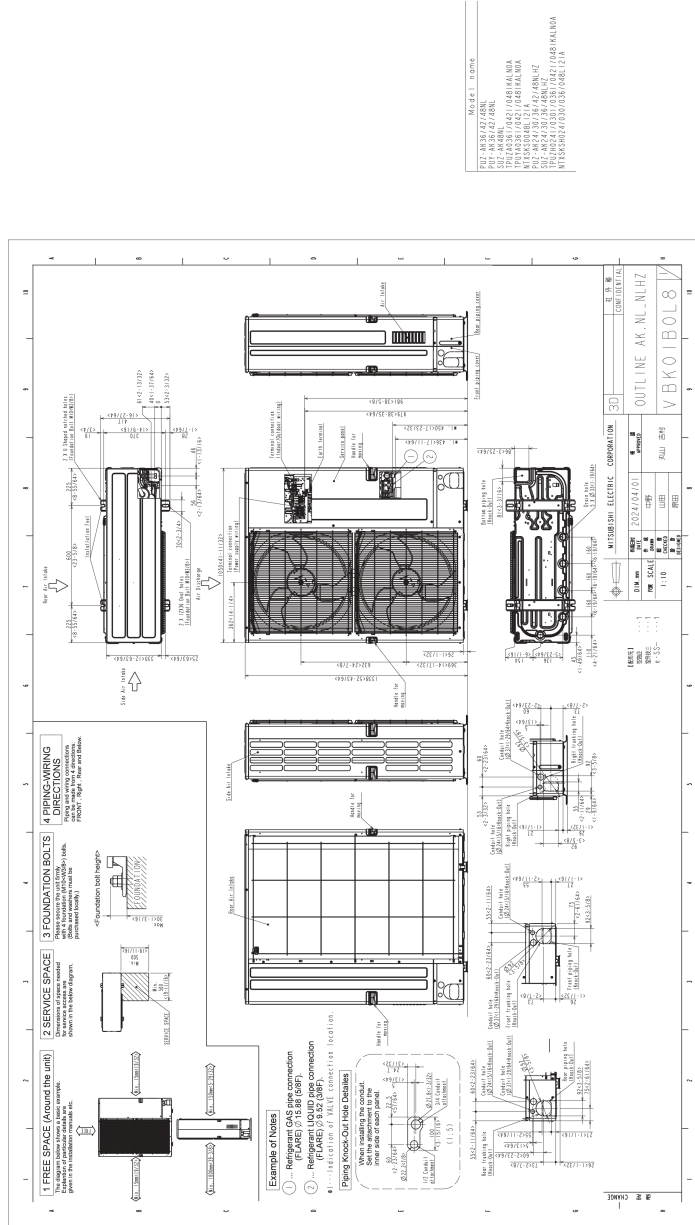
OUTDOOR UNIT ACCESSORIES: SUZ-AK30NLHZ

Air Outlet Guide	Air Outlet Guide 1 Piece	<input type="checkbox"/>	PAC-SH96SG-E (two pieces required)
Centralized Drain Pan	Centralized Drain Pan	<input type="checkbox"/>	PAC-SH97DP-E
Control/Service Tool	M- & P-Series Maintenance Tool Cable Set	<input type="checkbox"/>	M21EC0397
	ControlService Tool	<input type="checkbox"/>	PAC-SK52ST
	Maintenance Tool Interface	<input type="checkbox"/>	PAC-USCMS-MN-1
	USB Conversion Cable for PAC-USCMS-MN-1	<input type="checkbox"/>	M21EC1397
Drain Socket	Drain Socket	<input type="checkbox"/>	PAC-SG61DS-E
Hail Guards	Hail Guard	<input type="checkbox"/>	HG-A2
M-NET Converter	M-Net Interface for P-Series	<input type="checkbox"/>	PAC-SJ95MA-E
Mini-Split Wire	14 Gauge 4 wire Armored MiniSplit Cable50 ft roll	<input type="checkbox"/>	SW144-50
	14 Gauge 4 wire Armored MiniSplit Cable250 ft roll	<input type="checkbox"/>	SW144-250
	14 Gauge 4 wire MiniSplit Cable50 ft roll	<input type="checkbox"/>	S144-50
	16 Gauge 4 wire MiniSplit Cable250 ft roll	<input type="checkbox"/>	S164-250
	14 Gauge 4 wire MiniSplit Cable250 ft roll	<input type="checkbox"/>	S144-250
	16 Gauge 4 wire MiniSplit Cable50 ft roll	<input type="checkbox"/>	S164-50
Mounting Pad	Condensing Unit Mounting Pad 24 x 42 x 3	<input type="checkbox"/>	ULTRILITE2
Snow/Rain Diverter	SnowRain Diverter	<input type="checkbox"/>	SRD-5
Stand	Outdoor Unit Stand 12 High	<input type="checkbox"/>	QSMS1202M
	Outdoor Unit 3-14 inch Mounting Base Pair - Plastic	<input type="checkbox"/>	DSD-400P
	18 Dual Fan Stand	<input type="checkbox"/>	QSMS1802M
	24 Dual Fan Stand	<input type="checkbox"/>	QSMS2402M
Terminal Signal Adapter	3-Pin Wiring Harness	<input type="checkbox"/>	PAC-715AD
	5-Pin Wiring Harness	<input type="checkbox"/>	PAC-725AD
Wind Baffle	Front Wind Baffle	<input type="checkbox"/>	WB-PA3 (two pieces required)
Notes			

INDOOR UNIT DIMENSIONS: PAA-AA30NL



OUTDOOR UNIT DIMENSIONS: SUZ-AK30NLHZ



1340 Satellite Boulevard Suwanee, GA 30024
Toll Free: 800-433-4822 · mitsubishicomfort.com

METUS_2026-05_PROPIN

