

PAA-AA30NL & PUZ-AK30NLHZ
30,000 BTU/H CASD COIL INDOOR UNIT
30,000 BTU/H HYPER HEAT PUMP OUTDOOR UNIT



Job Name:

System Reference:

Date:



INDOOR Unit ... PAA-AA30NL

OUTDOOR Unit ... PUZ-AK30NLHZ

INDOOR UNIT FEATURES

- **Furnace Compatible:** Compatible with most gas furnaces, intelli-HEAT® allows for Intelligent Switchover between the furnace and heat pump operation.
*Mitsubishi Electric air-conditioner and heat pump systems should only be connected with ANSI-Z21.47/CSA2.3 certified furnaces
- **Intelligent Switchover:** Intelligent Switchover from electric heat pump to gas furnace operation in extreme cold for consistent comfort. The system can also be set to switch based optimal energy efficiency and to reduce your carbon footprint.
- **High Quality Drain Pan:** High quality drain pan material with high heat tolerance and low moisture absorption
- **Multi-Position Installation:** Versatile installation options, including horizontal (left or right) and vertical (up or down) orientations, with included drain pans to facilitate easy setup for any configuration.
- **Available Widths:** Available in 14.5", 17.5", and 21" widths

OUTDOOR UNIT FEATURES

- **H2i® Hyper-Heating:** 100% heating performance down to 5° F with guaranteed heating down to -13° F.
- **Inverter Driven Compressor:** Inverter technology uses only the precise amount of energy needed to keep a space comfortable.
- **Blue Fin Coating:** Anti-corrosion coating that protects the outdoor heat exchanger against salt, sulfur, and other airborne contaminants that impact the efficiency and performance of the outdoor units.
- **Base Pan Heater:** This advanced base pan heater helps to prevent interrupted operation due to water freezing after a defrost cycle, ensuring your warmth and comfort during colder weather.
- **Seacoast Protection:** Designed to protect against the corrosive effects of environments that are in close proximity to the sea.
- **Flash Injection:** Flash Injection enables optimum compressor performance when it is running at higher speeds to maintain indoor comfort during cold temperatures.

SPECIFICATIONS: PAA-AA30NL & PUZ-AK30NLHZ

| | | | |
|---|---|-------------------------------------|---|
| Cooling at 95F ¹ | Maximum Capacity | Btu/h | 31000 |
| | Rated Capacity | Btu/h | 30000 |
| | Minimum Capacity | Btu/h | 15800 |
| | Maximum Power Input | W | 2630 |
| | Rated Power Input | W | 2550 |
| | Moisture Removal | Pints/h | 7.60 |
| | Sensible Heat Factor | | 0.74 |
| Heating at 47F ² | Maximum Capacity | Btu/h | 35800 |
| | Rated Capacity | Btu/h | 35800 |
| | Minimum Capacity | Btu/h | 14900 |
| | Maximum Power Input | W | 3000 |
| | Rated Power Input | W | 3000 |
| | Power Factor [208V / 230V] | % | 90 / 90 |
| Heating at 17F ³ | Maximum Capacity | Btu/h | 32000 |
| | Rated Capacity | Btu/h | 26600 |
| | Maximum Power Input | W | 4940 |
| | Rated Power Input | W | 3120 |
| Heating at 5F ⁵ | Maximum Capacity | Btu/h | 32000 |
| Heating at -13F ⁹ | Maximum Capacity | Btu/h | 23000 |
| Efficiency | SEER2 | | 17.60 |
| | EER2 ¹ | | 11.70 |
| | HSPF2 [I/V] | | 9 |
| | COP at 47°F ² | | 3.5 |
| | COP at 17°F at Maximum Capacity ³ | | 1.80 |
| | COP at 5°F at Maximum Capacity ⁵ | | 2 |
| | COP at -13°F at Maximum Capacity ⁹ | | 1.86 |
| ENERGY STAR® Certified | | Yes | |
| Electrical | Voltage, Phase, Frequency | V AC / V AC , ø , Hz | 208 / 230 , 1 , 60 |
| | Guaranteed Voltage Range | V AC | 198 - 253 |
| | Voltage: Indoor - Outdoor, S1-S2 | V AC | 208/230 |
| | Voltage: Indoor - Outdoor, S2-S3 | V DC | 12-24 |
| | Short-circuit Current Rating [SCCR] | kA | 5 |
| | Recommended Fuse/Breaker Size (Outdoor) | A | 30 |
| Indoor Unit | Recommended Wire Size [Indoor - Outdoor] | AWG | 14 |
| | MCA | A | 0.2 |
| | Rated Airflow, Dry | CFM | 875 |
| | Maximum Airflow, Dry | CFM | 1024 |
| | Minimum Airflow, Dry | CFM | 700 |
| | Internal Static Pressure [at Rated CFM] | in.WG | 0.2 |
| | Drain Pipe Size O.D. | inch [mm] | 3/4 [19.05] |
| | Unit Dimensions (W x D x H) | inch x inch x inch [mm x mm x mm] | 14-1/2 x 21-7/16 x 27-1/2 [368 x 543 x 697] |
| | Package Dimensions (W x D x H) | inch x inch x inch [mm x mm x mm] | 17-7/16 x 25-5/16 x 33 [443 x 695 x 838] |
| | Unit Weight [Cased Coil Only] | lbs [kg] | 58.4 [26.5] |
| | Control Box Weight | lbs [kg] | 5.1 [2.3] |
| | Package Weight | lbs [kg] | 81.6 [37.0] |
| IDU Operating Temp. Range | Cooling Intake Air Temp [Maximum / Minimum] | deg F , deg F / deg F , deg F | 90 , 73 / 66 , 59 |
| | Heating Intake Air Temp [Maximum / Minimum] | deg F | 83 / 50 |
| Outdoor Unit | MCA | A | 29 |
| | MOCP | A | 48 |
| | Fan Motor Output | W | 74+74 |
| | Airflow Rate Cooling | CFM | 3740 |
| | Airflow Rate Heating | CFM | 3740 |
| | Defrost Method | | Reverse Cycle |
| Notes | | | |
| ¹ Cooling (Indoor // Outdoor) °F 80 DB, 67 WB // 95 DB, 75 WB - test ² Heating at 47°F (Indoor // Outdoor) °F 70 DB, 60 WB // 47 DB, 43 WB ³ Heating at 17°F (Indoor // Outdoor) °F 70 DB, 60 WB // 17 DB, 15 WB ⁵ Heating at 5°F (Indoor // Outdoor) °F 70 DB, 60 WB // 5 DB, 4 WB ⁹ Heating at -13°F (Indoor // Outdoor) °F 70 DB, 60 WB // -13 DB, -14 WB [*] Indoor/Outdoor Unit Operating Temperature Range (Cooling Air Temp [Maximum / Minimum]): • Wind baffles required to operate below 23°F DB in cooling mode. • Heat pump system with wind baffle: 0°F - 115°F. • Refer to wind baffle documentation for further information. ^{**} Outdoor Unit Operating Temperature Range (Cooling Thermal Lock-out / Re-start Temperatures; Heating Thermal Lock-out / Re-start Temperatures): • System cuts out in heating mode and automatically restarts at these temperatures. | | | |

SPECIFICATIONS: PAA-AA30NL & PUZ-AK30NLHZ

| | | | |
|---------------------------|--|-------------------------------------|---|
| Outdoor Unit | Coating on Heat Exchanger (Bluefin, Sea Coast) | | Yes , Yes |
| | Sound Pressure Level, Cooling ¹ | dB (A) | 52 |
| | Sound Pressure Level, Heating ² | dB (A) | 53 |
| | Compressor Type | | Twin Rotary |
| | Compressor Model | | MRK36FFGMC |
| | Compressor Oil [Type // Charge] | // oz | RM68EH // 45 |
| | External Finish Color | | Munsell No.3Y 7.8/1.1 |
| | Base Pan Heater | | Built-in |
| | Unit Dimensions (W x D x H) | inch x inch x inch [mm x mm x mm] | 41-11/32 x 14 x 52-43/64 [1050 x 355 x 1338] |
| | Package Dimensions (W x D x H) | inch x inch x inch [mm x mm x mm] | 42-15/16 x 17-3/4 x 58-5/16 [1090 x 450 x 1480] |
| | Unit Weight | lbs [kg] | 231 [105] |
| Package Weight | lbs [kg] | 258 [117] | |
| ODU Operating Temp. Range | Cooling Intake Air Temp [Maximum / Minimum*] | F | 115 / 23 |
| | Heating Intake Air Temp [Maximum / Minimum] | F , F / F , F | 70 , 59 / -13 , -13 |
| | Heating Thermal Lock-out / Re-start Temperatures** | F | -22 / -13 |
| Refrigerant | Type | | R454B |
| | Pre-Charged Refrigerant Amount | lbs , oz | 9 , 14 |
| | Maximum Pre-Charged Piping Length | ft [m] | 100 [30] |
| | Additional Refrigerant Charge Per Additional Piping Length | oz/ft | 0.6 |
| Piping | Gas Pipe Size O.D. [Flared] | inch [mm] | 5/8 [15.88] |
| | Liquid Pipe Size O.D. [Flared] | inch [mm] | 3/8 [9.52] |
| | Maximum Piping Length | ft [m] | 100 [30] |
| | Maximum Height Difference | ft [m] | 100 [30] |
| | Maximum Number of Bends | | 15 |

Notes

¹Cooling (Indoor // Outdoor) °F 80 DB, 67 WB // 95 DB, 75 WB - test

²Heating at 47°F (Indoor // Outdoor) °F 70 DB, 60 WB // 47 DB, 43 WB

³Heating at 17°F (Indoor // Outdoor) °F 70 DB, 60 WB // 17 DB, 15 WB

⁵Heating at 5°F (Indoor // Outdoor) °F 70 DB, 60 WB // 5 DB, 4 WB

⁹Heating at -13°F (Indoor // Outdoor) °F 70 DB, 60 WB // -13 DB, -14 WB

*Indoor/Outdoor Unit Operating Temperature Range (Cooling Air Temp [Maximum / Minimum]): • Wind baffles required to operate below 23°F DB in cooling mode. • Heat pump system with wind baffle: 0°F - 115°F. • Refer to wind baffle documentation for further information.

**Outdoor Unit Operating Temperature Range (Cooling Thermal Lock-out / Re-start Temperatures; Heating Thermal Lock-out / Re-start Temperatures): • System cuts out in heating mode and automatically restarts at these temperatures.

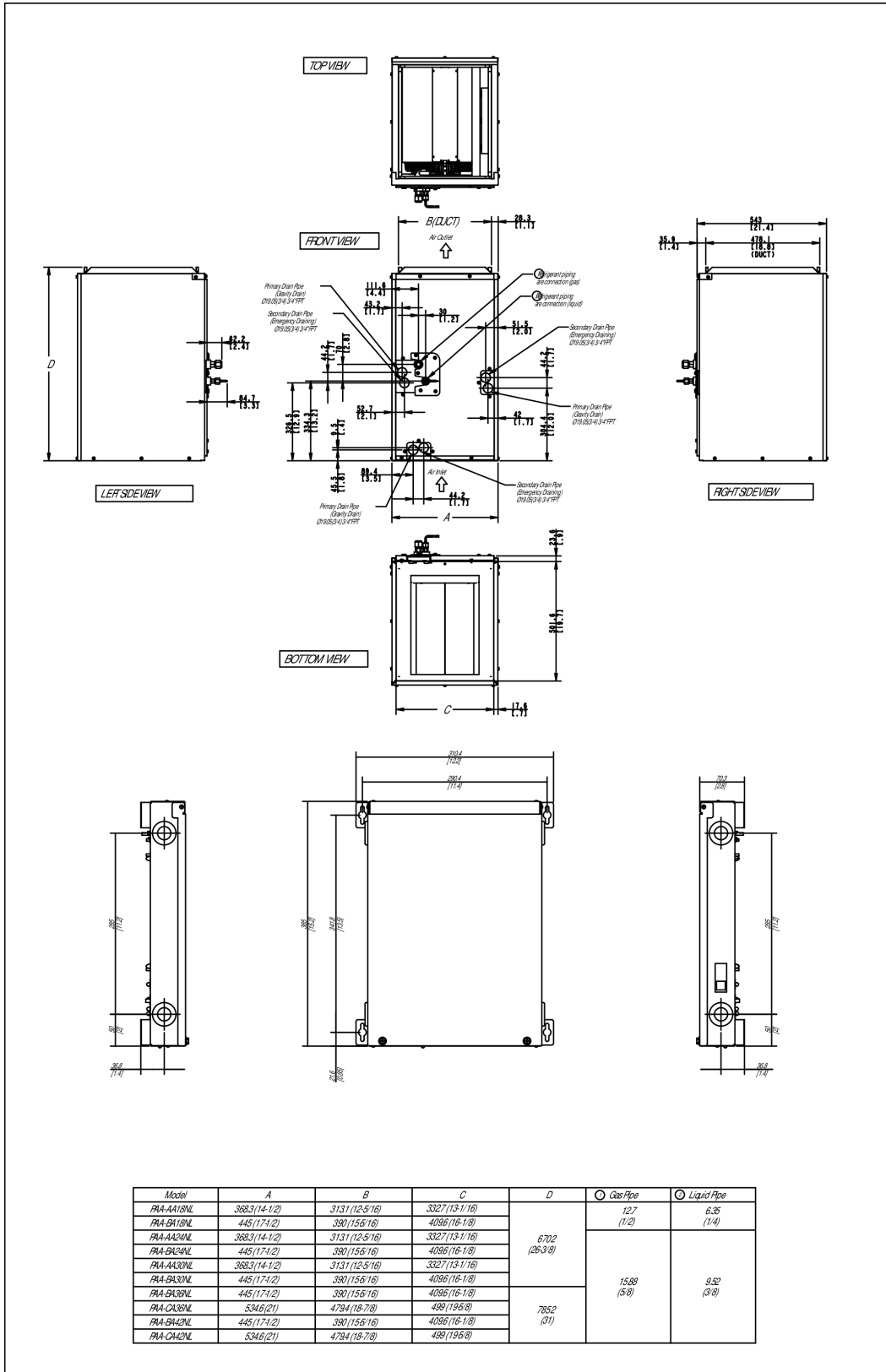
INDOOR UNIT ACCESSORIES: PAA-AA30NL

| | | | |
|---------------------------------------|---|--------------------------|-------------------|
| Condensate | Sauermann Condensate Pump 120-230V up to 60k BTU/h | <input type="checkbox"/> | SI30-230 |
| | Refco Condensate Pump 100-240V up to 120k BTU/h | <input type="checkbox"/> | COMBI |
| | Blue Diamond MaxiBlue Condensate Pump with Reservoir Sensor 115-230V up to 48k BTU/h | <input type="checkbox"/> | X88-721 |
| | Blue Diamond Sensor Extension Cable 15 Ft | <input type="checkbox"/> | C13-103 |
| | Blue Diamond (MaxiBlue Advanced) Mini Condensate Pump w/ Reservoir & Sensor (110V) up to 48,000 BTU/H [recommended] | <input type="checkbox"/> | X87-711 |
| | Blue Diamond MegaBlue Condensate Pump with Reservoir Sensor 115-230V up to 170k BTU/h | <input type="checkbox"/> | X87-835 |
| Control Interface | IT Extender | <input type="checkbox"/> | PAC-WHS01IE-E |
| | Wireless Interface 2 for Comfrot app | <input type="checkbox"/> | PAC-USWHS002-WF-2 |
| | Operation and Error Status Output Adapter ¹ | <input type="checkbox"/> | PAC-SF40RM-E |
| | Thermostat Interface | <input type="checkbox"/> | PAC-US446CN-1 |
| | Procon BACnet® and Modbus® Interface | <input type="checkbox"/> | PAC-UKPRC001-CN-1 |
| | kumo station® for Comfort app | <input type="checkbox"/> | PAC-WHS01HC-E |
| Disconnect Switch | (30A/600V/UL) [fits 2" X 4" utility box] - White | <input type="checkbox"/> | TAZ-MS303W |
| | 30A600VUL fits 2 X 4 utility box - Black | <input type="checkbox"/> | TAZ-MS303 |
| Lineset | 3/8 x 5/8 Lineset Twin-Tube Insulation - 65 feet | <input type="checkbox"/> | MPLS385812T-65 |
| | 3/8 x 5/8 Lineset Twin-Tube Insulation - 15 feet | <input type="checkbox"/> | MPLS385812T-15 |
| | 3/8 x 5/8 Lineset Twin-Tube Insulation - 100 feet | <input type="checkbox"/> | MPLS385812T-100 |
| | 3/8 x 5/8 Lineset Twin-Tube Insulation - 30 feet | <input type="checkbox"/> | MPLS385812T-30 |
| | 3/8 x 5/8 Lineset Twin-Tube Insulation - 10 feet | <input type="checkbox"/> | MPLS385812T-10 |
| | 3/8 x 5/8 Lineset Twin-Tube Insulation - 50 feet | <input type="checkbox"/> | MPLS385812T-50 |
| N/A | | <input type="checkbox"/> | Unknown |
| Power Supplies & Auxiliary Components | ERV On/Off Input Adapter for CNER on SVZ PEAD and PVA models | <input type="checkbox"/> | PAC-740 |
| Remote Sensor | Wall Mounted Remote Temperature Sensor | <input type="checkbox"/> | PAC-SE41TS-E |
| | Flush Mount Remote Temperature Sensor for SEZ SLZ SVZ and all P-Series models | <input type="checkbox"/> | PAC-USSEN002-FM-1 |
| | Wireless temperature and humidity sensor for Comfort app | <input type="checkbox"/> | PAC-USWHS003-TH-1 |
| Terminal Signal Adapter | 3-Pin Wiring Harness | <input type="checkbox"/> | PAC-715AD |
| | 5-Pin Wiring Harness | <input type="checkbox"/> | PAC-725AD |
| | Backup Heat Relay Kit | <input type="checkbox"/> | CN24RELAY-KIT-CM3 |
| Wired Remote Controller | Touch MA Remote Controller | <input type="checkbox"/> | PAR-CT01MAU-SB |
| | Simple Direct Wired Remote Controller | <input type="checkbox"/> | PAC-SDW01RC-1 |
| | Deluxe MA Wired Remote Controller | <input type="checkbox"/> | PAR-42MAAUB |
| | Simple MA Remote Controller | <input type="checkbox"/> | PAC-YT53CRAU-J |
| Wireless Remote Controller | Lockdown Bracket for Wireless Handheld Remote Controllers | <input type="checkbox"/> | RCMKP1CB |
| | Wireless RedLINK™ Remote Controller | <input type="checkbox"/> | MHK2 |
| | Universal Wireless Receiver for PAR-FL32MA-E | <input type="checkbox"/> | PAR-FA32MA-W |
| | Universal Wireless Receiver for PAR-FL32MA-E | <input type="checkbox"/> | PAR-FA32MA-E |
| | Wireless Remote Controller | <input type="checkbox"/> | PAR-SL101A-E |
| Notes | | | |

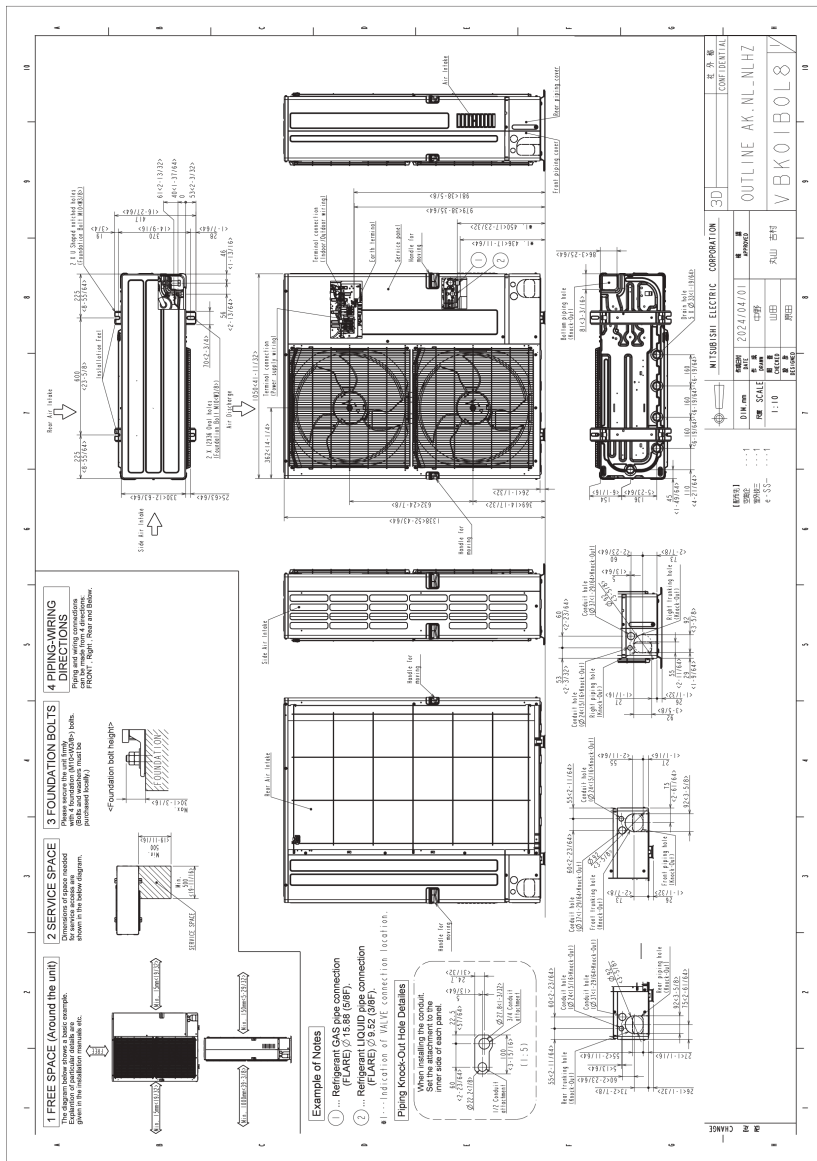
OUTDOOR UNIT ACCESSORIES: PUZ-AK30NLHZ

| | | | |
|-------------------------|---|--------------------------|------------------------------------|
| Air Outlet Guide | Air Outlet Guide 1 Piece | <input type="checkbox"/> | PAC-SH96SG-E (two pieces required) |
| Centralized Drain Pan | Centralized Drain Pan | <input type="checkbox"/> | PAC-SH97DP-E |
| Control/Service Tool | Maintenance Tool Interface | <input type="checkbox"/> | PAC-USCMS-MN-1 |
| | M- & P-Series Maintenance Tool Cable Set | <input type="checkbox"/> | M21EC0397 |
| | ControlService Tool | <input type="checkbox"/> | PAC-SK52ST |
| Drain Socket | Drain Socket | <input type="checkbox"/> | PAC-SG61DS-E |
| Hail Guards | Hail Guard | <input type="checkbox"/> | HG-A2 |
| M-NET Converter | M-Net Interface for P-Series | <input type="checkbox"/> | PAC-SJ95MA-E |
| Mini-Split Wire | 14 Gauge 4 wire MiniSplit Cable250 ft roll | <input type="checkbox"/> | S144-250 |
| | 14 Gauge 4 wire Armored MiniSplit Cable50 ft roll | <input type="checkbox"/> | SW144-50 |
| | 14 Gauge 4 wire MiniSplit Cable50 ft roll | <input type="checkbox"/> | S144-50 |
| | 14 Gauge 4 wire Armored MiniSplit Cable250 ft roll | <input type="checkbox"/> | SW144-250 |
| Mounting Pad | Condensing Unit Mounting Pad 24 x 42 x 3 | <input type="checkbox"/> | ULTRILITE2 |
| Snow/Rain Diverter | SnowRain Diverter | <input type="checkbox"/> | SRD-5 |
| Stand | 18 Dual Fan Stand | <input type="checkbox"/> | QSMS1802M |
| | Outdoor Unit 3-14 inch Mounting Base Pair - Plastic | <input type="checkbox"/> | DSD-400P |
| | Outdoor Unit Stand 12 High | <input type="checkbox"/> | QSMS1202M |
| | 24 Dual Fan Stand | <input type="checkbox"/> | QSMS2402M |
| Terminal Signal Adapter | 3-Pin Wiring Harness | <input type="checkbox"/> | PAC-715AD |
| | 5-Pin Wiring Harness | <input type="checkbox"/> | PAC-725AD |
| Wind Baffle | Front Wind Baffle | <input type="checkbox"/> | WB-PA3 (two pieces required) |
| Notes | | | |

INDOOR UNIT DIMENSIONS: PAA-AA30NL



OUTDOOR UNIT DIMENSIONS: PUZ-AK30NLHZ



1340 Satellite Boulevard Suwanee, GA 30024
 Toll Free: 800-433-4822 · mitsubishicomfort.com

METUS_2026-04_PROPIN

