

PAA-AA18NL & PUZ-AK24NLHZ
18,000 BTU/H CASD COIL INDOOR UNIT
18,000 BTU/H HYPER HEAT PUMP OUTDOOR UNIT



Job Name:

System Reference:

Date:



INDOOR Unit ... PAA-AA18NL

OUTDOOR Unit ... PUZ-AK24NLHZ

INDOOR UNIT FEATURES

- **Furnace Compatible:** Compatible with most gas furnaces, intelli-HEAT® allows for Intelligent Switchover between the furnace and heat pump operation.
*Mitsubishi Electric air-conditioner and heat pump systems should only be connected with ANSI-Z21.47/CSA2.3 certified furnaces
- **Intelligent Switchover:** Intelligent Switchover from electric heat pump to gas furnace operation in extreme cold for consistent comfort. The system can also be set to switch based optimal energy efficiency and to reduce your carbon footprint.
- **High Quality Drain Pan:** High quality drain pan material with high heat tolerance and low moisture absorption
- **Multi-Position Installation:** Versatile installation options, including horizontal (left or right) and vertical (up or down) orientations, with included drain pans to facilitate easy setup for any configuration.
- **Available Widths:** Available in 14.5", 17.5", and 21" widths

OUTDOOR UNIT FEATURES

- **H2i® Hyper-Heating:** 100% heating performance down to 5° F with guaranteed heating down to -13° F.
- **Inverter Driven Compressor:** Inverter technology uses only the precise amount of energy needed to keep a space comfortable.
- **Blue Fin Coating:** Anti-corrosion coating that protects the outdoor heat exchanger against salt, sulfur, and other airborne contaminants that impact the efficiency and performance of the outdoor units.
- **Base Pan Heater:** This advanced base pan heater helps to prevent interrupted operation due to water freezing after a defrost cycle, ensuring your warmth and comfort during colder weather.
- **Seacoast Protection:** Designed to protect against the corrosive effects of environments that are in close proximity to the sea.
- **Flash Injection:** Flash Injection enables optimum compressor performance when it is running at higher speeds to maintain indoor comfort during cold temperatures.

SPECIFICATIONS: PAA-AA18NL & PUZ-AK24NLHZ

Cooling at 95F ¹	Maximum Capacity	Btu/h	19000
	Rated Capacity	Btu/h	18000
	Minimum Capacity	Btu/h	13100
	Maximum Power Input	W	1940
	Rated Power Input	W	1530
	Moisture Removal	Pints/h	4.80
	Sensible Heat Factor		0.73
Heating at 47F ²	Maximum Capacity	Btu/h	22600
	Rated Capacity	Btu/h	22600
	Minimum Capacity	Btu/h	12400
	Maximum Power Input	W	2140
	Rated Power Input	W	2140
	Power Factor [208V / 230V]	%	91 / 91
Heating at 17F ³	Maximum Capacity	Btu/h	22000
	Rated Capacity	Btu/h	16500
	Maximum Power Input	W	4070
	Rated Power Input	W	2300
Heating at 5F ⁵	Maximum Capacity	Btu/h	22000
Heating at -13F ⁹	Maximum Capacity	Btu/h	18200
Efficiency	SEER2		15.90
	EER2 ¹		11.70
	HSPF2 [IV]		8.50
	COP at 47°F ²		3.1
	COP at 17°F at Maximum Capacity ³		1.50
	COP at 5°F at Maximum Capacity ⁵		1.77
	COP at -13°F at Maximum Capacity ⁹		1.68
ENERGY STAR® Certified		Yes	
Electrical	Voltage, Phase, Frequency	V AC / V AC , ø , Hz	208 / 230 , 1 , 60
	Guaranteed Voltage Range	V AC	198 - 253
	Voltage: Indoor - Outdoor, S1-S2	V AC	208/230
	Voltage: Indoor - Outdoor, S2-S3	V DC	12-24
	Short-circuit Current Rating [SCCR]	kA	5
	Recommended Fuse/Breaker Size (Outdoor)	A	25
Indoor Unit	Recommended Wire Size [Indoor - Outdoor]	AWG	14
	MCA	A	0.2
	Rated Airflow, Dry	CFM	525
	Maximum Airflow, Dry	CFM	812
	Minimum Airflow, Dry	CFM	424
	Internal Static Pressure [at Rated CFM]	in.WG	0.1
	Drain Pipe Size O.D.	inch [mm]	3/4 [19.05]
	Unit Dimensions (W x D x H)	inch x inch x inch [mm x mm x mm]	14-1/2 x 21-7/16 x 27-1/2 [368 x 543 x 697]
	Package Dimensions (W x D x H)	inch x inch x inch [mm x mm x mm]	17-7/16 x 25-5/16 x 33 [443 x 695 x 838]
	Unit Weight [Cased Coil Only]	lbs [kg]	49.6 [22.5]
	Control Box Weight	lbs [kg]	5.1 [2.3]
	Package Weight	lbs [kg]	71.7 [32.5]
IDU Operating Temp. Range	Cooling Intake Air Temp [Maximum / Minimum]	deg F , deg F / deg F , deg F	90 , 73 / 66 , 59
	Heating Intake Air Temp [Maximum / Minimum]	deg F	83 / 50
Outdoor Unit	MCA	A	24
	MOCP	A	39
	Fan Motor Output	W	74+74
	Airflow Rate Cooling	CFM	3740
	Airflow Rate Heating	CFM	3740
	Defrost Method		Reverse Cycle

Notes

¹Cooling (Indoor // Outdoor) °F 80 DB, 67 WB // 95 DB, 75 WB - test

²Heating at 47°F (Indoor // Outdoor) °F 70 DB, 60 WB // 47 DB, 43 WB

³Heating at 17°F (Indoor // Outdoor) °F 70 DB, 60 WB // 17 DB, 15 WB

⁵Heating at 5°F (Indoor // Outdoor) °F 70 DB, 60 WB // 5 DB, 4 WB

⁹Heating at -13°F (Indoor // Outdoor) °F 70 DB, 60 WB // -13 DB, -14 WB

^{*}Indoor/Outdoor Unit Operating Temperature Range (Cooling Air Temp [Maximum / Minimum]): • Wind baffles required to operate below 23°F DB in cooling mode. • Heat pump system with wind baffle: 0°F - 115°F. • Refer to wind baffle documentation for further information.

^{**}Outdoor Unit Operating Temperature Range (Cooling Thermal Lock-out / Re-start Temperatures; Heating Thermal Lock-out / Re-start Temperatures): • System cuts out in heating mode and automatically restarts at these temperatures.

SPECIFICATIONS: PAA-AA18NL & PUZ-AK24NLHZ

Outdoor Unit	Coating on Heat Exchanger (Bluefin, Sea Coast)		Yes , Yes
	Sound Pressure Level, Cooling ¹	dB (A)	52
	Sound Pressure Level, Heating ²	dB (A)	53
	Compressor Type		Twin Rotary
	Compressor Model		MRK36FFGMC
	Compressor Oil [Type // Charge]	// oz	RM68EH // 45
	External Finish Color		Munsell No.3Y 7.8/1.1
	Base Pan Heater		Built-in
	Unit Dimensions (W x D x H)	inch x inch x inch [mm x mm x mm]	41-11/32 x 14 x 52-43/64 [1050 x 355 x 1338]
	Package Dimensions (W x D x H)	inch x inch x inch [mm x mm x mm]	42-15/16 x 17-3/4 x 58-5/16 [1090 x 450 x 1480]
Unit Weight	lbs [kg]	231 [105]	
Package Weight	lbs [kg]	258 [117]	
ODU Operating Temp. Range	Cooling Intake Air Temp [Maximum / Minimum*]	F	115 / 23
	Heating Intake Air Temp [Maximum / Minimum]	F , F / F , F	70 , 59 / -13 , -13
	Heating Thermal Lock-out / Re-start Temperatures**	F	-22 / -13
Refrigerant	Type		R454B
	Pre-Charged Refrigerant Amount	lbs , oz	9 , 14
	Maximum Pre-Charged Piping Length	ft [m]	100 [30]
	Additional Refrigerant Charge Per Additional Piping Length	oz/ft	0.6
Piping	Gas Pipe Size O.D. [Flared]	inch [mm]	5/8 [15.88]
	Liquid Pipe Size O.D. [Flared]	inch [mm]	3/8 [9.52]
	Maximum Piping Length	ft [m]	100 [30]
	Maximum Height Difference	ft [m]	100 [30]
	Maximum Number of Bends		15

Notes

¹Cooling (Indoor // Outdoor) °F 80 DB, 67 WB // 95 DB, 75 WB - test

²Heating at 47°F (Indoor // Outdoor) °F 70 DB, 60 WB // 47 DB, 43 WB

³Heating at 17°F (Indoor // Outdoor) °F 70 DB, 60 WB // 17 DB, 15 WB

⁵Heating at 5°F (Indoor // Outdoor) °F 70 DB, 60 WB // 5 DB, 4 WB

⁹Heating at -13°F (Indoor // Outdoor) °F 70 DB, 60 WB // -13 DB, -14 WB

*Indoor/Outdoor Unit Operating Temperature Range (Cooling Air Temp [Maximum / Minimum]): • Wind baffles required to operate below 23°F DB in cooling mode. • Heat pump system with wind baffle: 0°F - 115°F. • Refer to wind baffle documentation for further information.

**Outdoor Unit Operating Temperature Range (Cooling Thermal Lock-out / Re-start Temperatures; Heating Thermal Lock-out / Re-start Temperatures): • System cuts out in heating mode and automatically restarts at these temperatures.

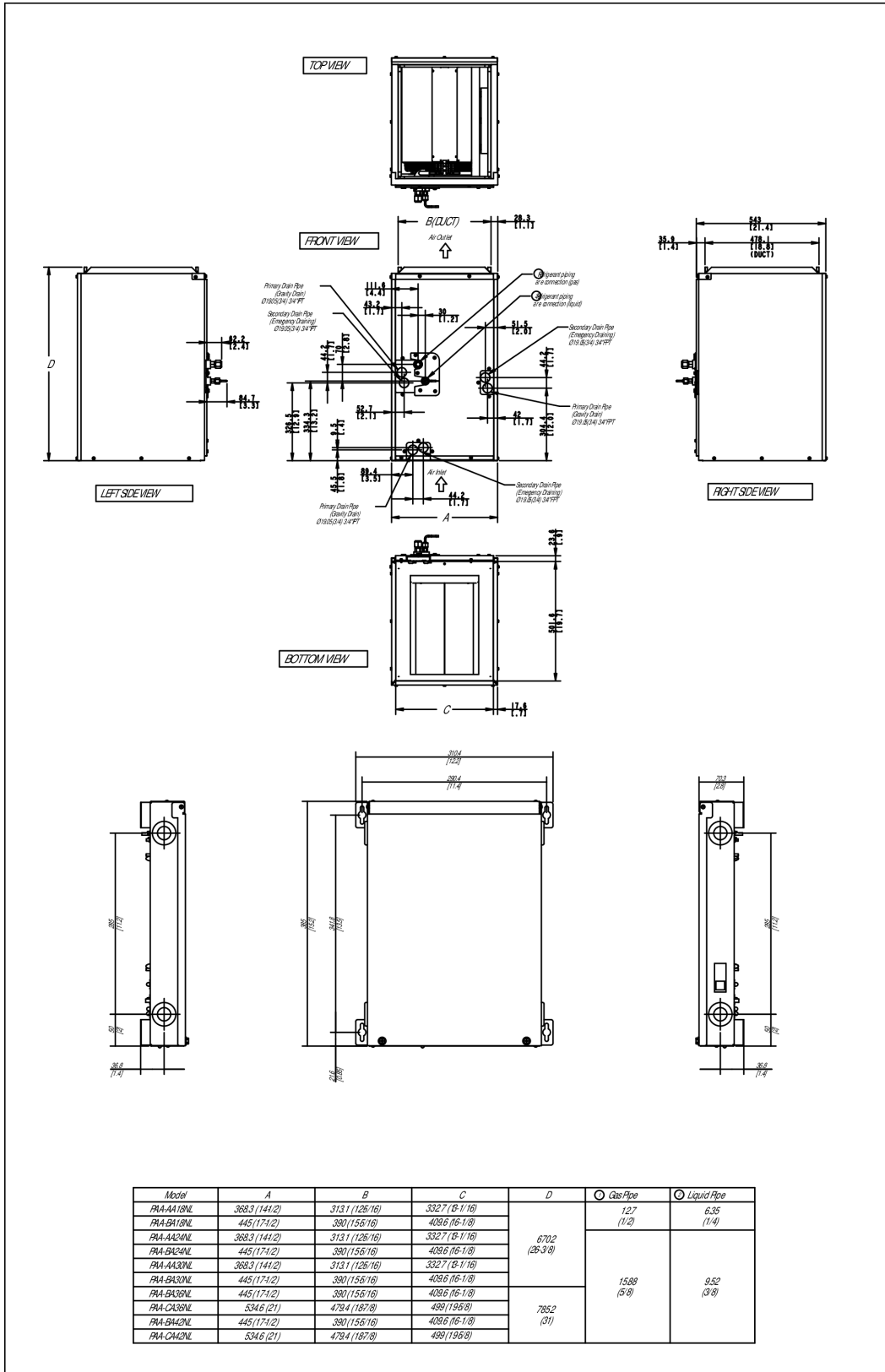
INDOOR UNIT ACCESSORIES: PAA-AA18NL

Condensate	Blue Diamond MegaBlue Condensate Pump with Reservoir Sensor 115-230V up to 170k BTU/h	<input type="checkbox"/>	X87-835
	Blue Diamond MaxiBlue Condensate Pump with Reservoir Sensor 115-230V up to 48k BTU/h	<input type="checkbox"/>	X88-721
	Blue Diamond Sensor Extension Cable 15 Ft	<input type="checkbox"/>	C13-103
	Refco Condensate Pump 100-240V up to 120k BTU/h	<input type="checkbox"/>	COMBI
	Blue Diamond (MaxiBlue Advanced) Mini Condensate Pump w/ Reservoir & Sensor (110V) up to 48,000 BTU/H [recommended]	<input type="checkbox"/>	X87-711
	Sauermann Condensate Pump 120-230V up to 60k BTU/h	<input type="checkbox"/>	SI30-230
Control Interface	kumo station® for Comfort app	<input type="checkbox"/>	PAC-WHS01HC-E
	Wireless Interface 2 for Comfrot app	<input type="checkbox"/>	PAC-USWHS002-WF-2
	Thermostat Interface	<input type="checkbox"/>	PAC-US446CN-1
	IT Extender	<input type="checkbox"/>	PAC-WHS01IE-E
	Procon BACnet® and Modbus® Interface	<input type="checkbox"/>	PAC-UKPRC001-CN-1
	Operation and Error Status Output Adapter ¹	<input type="checkbox"/>	PAC-SF40RM-E
Disconnect Switch	30A600VUL fits 2 X 4 utility box - Black	<input type="checkbox"/>	TAZ-MS303
	(30A/600V/UL) [fits 2" X 4" utility box] - White	<input type="checkbox"/>	TAZ-MS303W
Lineset	3/8 x 5/8 Lineset Twin-Tube Insulation - 30 feet	<input type="checkbox"/>	MPLS385812T-30
	3/8 x 5/8 Lineset Twin-Tube Insulation - 65 feet	<input type="checkbox"/>	MPLS385812T-65
	3/8 x 5/8 Lineset Twin-Tube Insulation - 15 feet	<input type="checkbox"/>	MPLS385812T-15
	3/8 x 5/8 Lineset Twin-Tube Insulation - 10 feet	<input type="checkbox"/>	MPLS385812T-10
	1/4 x 1/2 Lineset Twin-Tube Insulation - 30 feet	<input type="checkbox"/>	MLS141212T-30
	1/4 x 1/2 Lineset Twin-Tube Insulation - 15 feet	<input type="checkbox"/>	MLS141212T-15
	3/8 x 5/8 Lineset Twin-Tube Insulation - 50 feet	<input type="checkbox"/>	MPLS385812T-50
	1/4 x 1/2 Lineset Twin-Tube Insulation - 50 feet	<input type="checkbox"/>	MLS141212T-50
	1/4 x 1/2 Lineset Twin-Tube Insulation - 65 feet	<input type="checkbox"/>	MLS141212T-65
	1/4 x 1/2 Lineset Twin-Tube Insulation - 100 feet	<input type="checkbox"/>	MLS141212T-100
	3/8 x 5/8 Lineset Twin-Tube Insulation - 100 feet	<input type="checkbox"/>	MPLS385812T-100
N/A		<input type="checkbox"/>	Unknown
Port Adaptor	Adaptor 1/4 x 3/8	<input checked="" type="checkbox"/>	PAC-SJ87RJ-E
	Adaptor 1/2 x 5/8	<input checked="" type="checkbox"/>	PAC-SK89RJ-E
Power Supplies & Auxiliary Components	ERV On/Off Input Adapter for CNER on SVZ PEAD and PVA models	<input type="checkbox"/>	PAC-740
Remote Sensor	Flush Mount Remote Temperature Sensor for SEZ SLZ SVZ and all P-Series models	<input type="checkbox"/>	PAC-USSEN002-FM-1
	Wireless temperature and humidity sensor for Comfort app	<input type="checkbox"/>	PAC-USWHS003-TH-1
	Wall Mounted Remote Temperature Sensor	<input type="checkbox"/>	PAC-SE41TS-E
Terminal Signal Adapter	Backup Heat Relay Kit	<input type="checkbox"/>	CN24RELAY-KIT-CM3
	3-Pin Wiring Harness	<input type="checkbox"/>	PAC-715AD
	5-Pin Wiring Harness	<input type="checkbox"/>	PAC-725AD
Wired Remote Controller	Deluxe MA Wired Remote Controller	<input type="checkbox"/>	PAR-42MAAUB
	Touch MA Remote Controller	<input type="checkbox"/>	PAR-CT01MAU-SB
	Simple Direct Wired Remote Controller	<input type="checkbox"/>	PAC-SDW01RC-1
	Simple MA Remote Controller	<input type="checkbox"/>	PAC-YT53CRAU-J
Wireless Remote Controller	Wireless Remote Controller	<input type="checkbox"/>	PAR-SL101A-E
	Lockdown Bracket for Wireless Handheld Remote Controllers	<input type="checkbox"/>	RCMKP1CB
	Universal Wireless Receiver for PAR-FL32MA-E	<input type="checkbox"/>	PAR-FA32MA-E
	Wireless RedLINK™ Remote Controller	<input type="checkbox"/>	MHK2
	Universal Wireless Receiver for PAR-FL32MA-E	<input type="checkbox"/>	PAR-FA32MA-W
Notes			

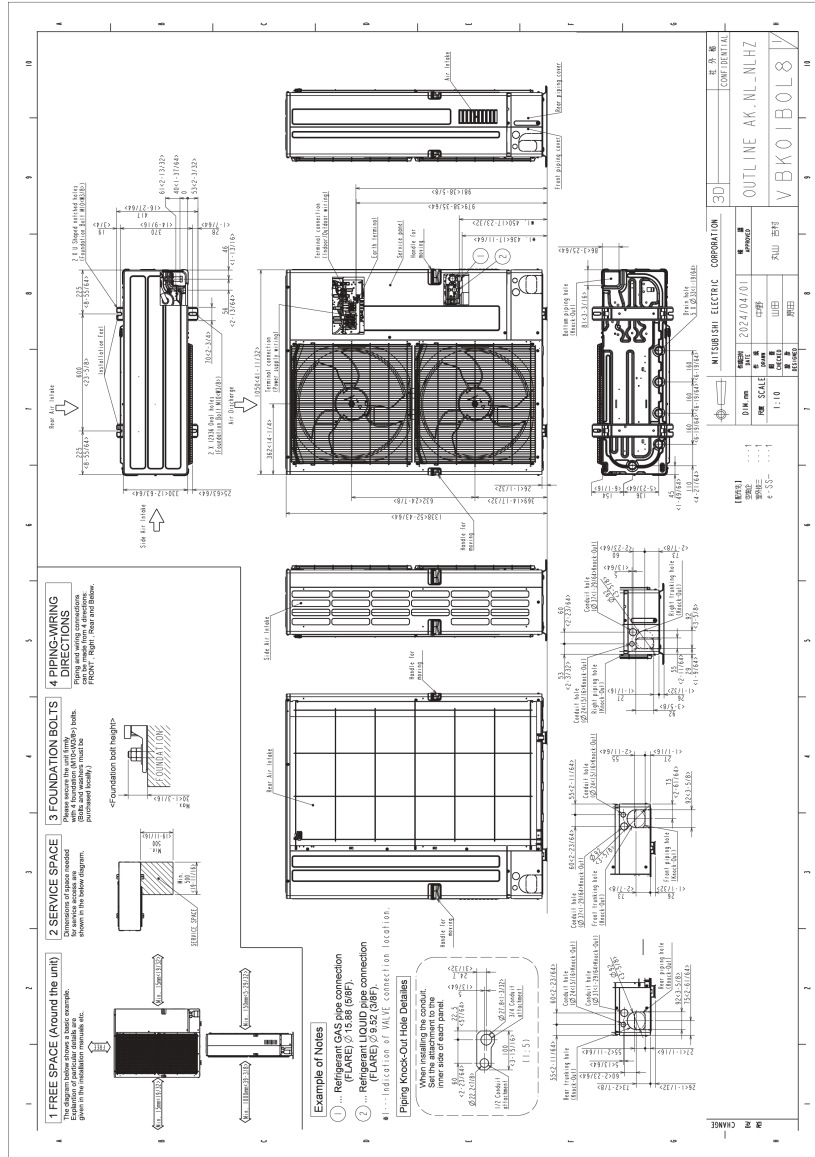
OUTDOOR UNIT ACCESSORIES: PUZ-AK24NLHZ

Air Outlet Guide	Air Outlet Guide 1 Piece	<input type="checkbox"/>	PAC-SH96SG-E (two pieces required)
Centralized Drain Pan	Centralized Drain Pan	<input type="checkbox"/>	PAC-SH97DP-E
Control/Service Tool	M- & P-Series Maintenance Tool Cable Set	<input type="checkbox"/>	M21EC0397
	ControlService Tool	<input type="checkbox"/>	PAC-SK52ST
	Maintenance Tool Interface	<input type="checkbox"/>	PAC-USCMS-MN-1
Drain Socket	Drain Socket	<input type="checkbox"/>	PAC-SG61DS-E
Hail Guards	Hail Guard	<input type="checkbox"/>	HG-A2
M-NET Converter	M-Net Interface for P-Series	<input type="checkbox"/>	PAC-SJ95MA-E
Mini-Split Wire	14 Gauge 4 wire MiniSplit Cable50 ft roll	<input type="checkbox"/>	S144-50
	14 Gauge 4 wire Armored MiniSplit Cable250 ft roll	<input type="checkbox"/>	SW144-250
	14 Gauge 4 wire MiniSplit Cable250 ft roll	<input type="checkbox"/>	S144-250
	14 Gauge 4 wire Armored MiniSplit Cable50 ft roll	<input type="checkbox"/>	SW144-50
Mounting Pad	Condensing Unit Mounting Pad 24 x 42 x 3	<input type="checkbox"/>	ULTRILITE2
Snow/Rain Diverter	SnowRain Diverter	<input type="checkbox"/>	SRD-5
Stand	24 Dual Fan Stand	<input type="checkbox"/>	QSMS2402M
	Outdoor Unit Stand 12 High	<input type="checkbox"/>	QSMS1202M
	18 Dual Fan Stand	<input type="checkbox"/>	QSMS1802M
	Outdoor Unit 3-14 inch Mounting Base Pair - Plastic	<input type="checkbox"/>	DSD-400P
Terminal Signal Adapter	3-Pin Wiring Harness	<input type="checkbox"/>	PAC-715AD
	5-Pin Wiring Harness	<input type="checkbox"/>	PAC-725AD
Wind Baffle	Front Wind Baffle	<input type="checkbox"/>	WB-PA3 (two pieces required)
Notes			

INDOOR UNIT DIMENSIONS: PAA-AA18NL



OUTDOOR UNIT DIMENSIONS: PUZ-AK24NLHZ



1340 Satellite Boulevard Suwanee, GA 30024
 Toll Free: 800-433-4822 · mitsubishicomfort.com

METUS_2026-04_PROPIN

