

# MXZ-3D30NLHZ

## 28,400 BTU/H HYPER HEAT PUMP OUTDOOR UNIT



Job Name:

System Reference:

Date:



### GENERAL FEATURES

- Thermal Differential 1°F
- Seacoast protection: Seacoast protection on heat exchanger and base panel (rated for 2,000 hrs. in accordance with ASTM B117 testing)
- Quiet operation: Outdoor units are as quiet as a typical conversation, and most indoor units are whisper quiet.
- INVERTER-driven compressor: An inverter-driven compressor generates the precise capacity needed to maintain a temperature set point.
- Hyper-Heating INVERTER®: Hyper-heating performance offers 100% heating capacity at 5°F and 75% heating capacity at -13°F
- High pressure protection
- Fan motor overheating/voltage protection
- Compressor thermal protection
- Compressor overcurrent detection
- Compatible with M- and P-Series and CITY MULTI® indoor units (branch box required for connection with M- and P-Series)
- Built-in base pan heater

Specifications			System
Unit Type			MXZ-3D30NLHZ
Cooling at 95F <sup>1</sup> (Non-Ducted // Mixed // Ducted)	Maximum Capacity	Btu/h	30,000 // 28,700 // 27,400
	Rated Capacity	Btu/h	28,400 // 27,800 // 27,400
	Minimum Capacity	Btu/h	11,600 // 11,600 // 11,600
	Maximum Power Input	W	3,550 // 3,660 // 3,770
	Rated Power Input	W	2,470 // 2,565 // 2,660
	Power Factor (208V)	%	0.99 // 0.99 // 0.99
	Power Factor (230V)	%	0.99 // 0.99 // 0.99
Heating at 47F <sup>2</sup> (Non-Ducted // Mixed // Ducted)	Maximum Capacity	Btu/h	36,000 // 35,500 // 35,000
	Rated Capacity	Btu/h	28,600 // 28,000 // 27,600
	Minimum Capacity	Btu/h	12,800 // 12,800 // 12,800
	Maximum Power Input	W	3,760 // 4,150 // 4,540
	Rated Power Input	W	2,395 // 2,340 // 2,286
	Power Factor (208V)	%	0.99 // 0.99 // 0.99
Heating at 17F <sup>3</sup> (Non-Ducted // Mixed // Ducted)	Maximum Capacity	Btu/h	28,600 // 28,100 // 27,600
	Rated Capacity	Btu/h	18,300 // 17,600 // 17,000
	Maximum Power Input	W	4,700 // 4,479 // 4,258
	Rated Power Input	W	1,916 // 1,983 // 2,077
	Power Factor (208V)	%	0.99 // 0.99 // 0.99
Heating at 5F <sup>4</sup> (Non-Ducted // Mixed // Ducted)	Maximum Capacity	Btu/h	28,600 // 28,000 // 27,600
	Maximum Power Input	W	4,506 // 4,508 // 4,493
Heating at -13F <sup>5</sup> (Non-Ducted // Mixed // Ducted)	Maximum Capacity	Btu/h	22,400 // 22,100 // 21,800
	Maximum Power Input	W	3,671 // 3,668 // 3,665
Efficiency (Non-Ducted // Mixed // Ducted)	SEER2 <sup>1</sup>		20 // 18 // 16
	EER2 <sup>1</sup>		11.50 // 10.90 // 10.30
	HSPF2 (IV) <sup>2</sup>		10 // 9 // 8
	COP at 47°F <sup>2</sup>		3.50 // 3.52 // 3.54
	COP at 17°F at Maximum Capacity <sup>3</sup>		1.78 // 1.82 // 1.88
	COP at 5°F at Maximum Capacity <sup>4</sup>		1.86 // 1.82 // 1.80
	ENERGY STAR® Certified		Yes // No // No

#### NOTES

<sup>1</sup>Cooling at 95°F (Indoor: 80°F DB, 67°F WB // Outdoor: 95°F DB, 75°F WB)

<sup>2</sup>Heating at 47°F (Indoor: 70°F DB, 60°F WB // Outdoor: 47°F DB, 43°F WB)

<sup>3</sup>Heating at 17°F (Indoor: 70°F DB, 60°F WB // Outdoor: 17°F DB, 15°F WB)

<sup>4</sup>Heating at 5°F (Indoor: 70°F DB, 60°F WB // Outdoor: 5°F DB, 4°F WB)

<sup>5</sup>Heating at -13°F (Indoor: 70°F DB, 60°F WB // Outdoor: -13°F DB, -14°F WB)

Capacity varies based on the number of indoor units operating and the model of the Multi-zone Outdoor Unit. For reference to connected capacity charts, please refer to Multi-zone Outdoor Unit Operational Performance.

For actual capacity performance based on indoor unit type and number of indoor units connected, please refer to MXZ Operational Performance.

Although the maximum connectable capacity is 130%, the outdoor unit cannot provide more than 100% of the rated capacity.

Please utilize this over capacity capability for load shedding or applications where it is known that all connected units will NOT be operating at the same time.

<sup>1</sup> Indoor/Outdoor Unit Operating Temperature Range (Cooling Air Temp [Maximum / Minimum]):

• Applications should be restricted to comfort cooling only; equipment cooling applications are not recommended for low ambient temperature conditions.

\*\* Outdoor Unit Operating Temperature Range (Cooling Thermal Lock-out / Re-start Temperatures; Heating Thermal Lock-out / Re-start Temperatures):

• System cuts out in heating mode and automatically restarts at these temperatures.

# SPECIFICATIONS: MXZ-3D30NLHZ

Specifications			System
Unit Type			MXZ-3D30NLHZ
Electrical	Electrical Power Requirements	V AC / V AC, $\phi$ , Hz	208 / 230, 1, 60
	Guaranteed Voltage Range	V AC	198 - 253
	Voltage: Indoor - Outdoor, S1-S2	V AC	208/230
	Voltage: Indoor - Outdoor, S2-S3	V DC	24
	Recommended Wire Size (Indoor - Outdoor)	AWG	14
	Short-circuit Current Rating (SCCR)	kA	5
	MCA	A	38
	MOCP	A	65
Outdoor Unit	Fan Motor Full Load Amperage	A	1.74
	Fan Motor Output	W	88
	Defrost Method		Reverse Cycle
	Blue Fin Heat Exchanger Coating		Yes
	Airflow Rate Cooling/Heating	CFM	2,239 / 2,378
	Sound Pressure Level, Cooling <sup>1</sup>	dB (A)	56
	Sound Pressure Level, Heating <sup>2</sup>	dB (A)	58
	Compressor Type		Twin Rotary
	Compressor Model		SRB280FDRMC
	Compressor Oil Type // Charge	Type // oz	RM68EH // 23.7
	External Finish Color		Munsell 3.0Y 7.8/1.1
	Base Pan Heater		Built-in
	Unit Dimensions (W x D x H)	inch x inch x inch [mm x mm x mm]	37-13/32 x 13 x 31-11/32 [950 x 330 x 796]
	Package Dimensions (W x D x H)	inch x inch x inch [mm x mm x mm]	41-11/32 x 17-5/16 x 38-31/32 [1,050 x 440 x 990]
	Unit Weight	lbs [kg]	152 [69]
Package Weight	lbs [kg]	178 [81]	
ODU Operating Temp. Range	Cooling Intake Air Temp (Maximum / Minimum)	°FDB	115 / 14
	Cooling Thermal Lock-out / Re-start Temperatures	°FDB	10 / 14
	Heating Intake Air Temp [Maximum / Minimum]	°FDB, °FWB / °FDB, °FWB	75, 65 / -12, -13
	Heating Thermal Lock-out / Re-start Temperatures**	°FDB	-22.5 / -14
Refrigerant	Type		R454B
	Pre-Charged Refrigerant Amount	lbs, oz	6, 3
	Maximum Pre-Charged Piping Length	ft	230
IDU Connection	Minimum Number of Connected IDU		2
	Maximum Number of Connected IDU		3
	Minimum Connected Capacity	Btu/h	12,000
	Maximum connected capacity	Btu/h	36,000
Piping	Liquid Pipe Size O.D. (Flared)	inch	A: 1/4 B: 1/4 C: 1/4
	Gas Pipe Size O.D. (Flared)	inch	A: 1/2 B: 3/8 C: 3/8
	Total Piping Length	ft [m]	230 [70]
	Farthest Piping Length	ft [m]	82 [25]
	Maximum Height Difference, ODU above IDU	ft [m]	49 [15]
	Maximum Height Difference, ODU below IDU	ft [m]	49 [15]
	Maximum Number of Bends for IDU		70

**NOTES**

<sup>1</sup>Cooling at 95°F (Indoor: 80°F DB, 67°F WB // Outdoor: 95°F DB, 75°F WB)

<sup>2</sup>Heating at 47°F (Indoor: 70°F DB, 60°F WB // Outdoor: 47°F DB, 43°F WB)

<sup>3</sup>Heating at 17°F (Indoor: 70°F DB, 60°F WB // Outdoor: 17°F DB, 15°F WB)

<sup>4</sup>Heating at 5°F (Indoor: 70°F DB, 60°F WB // Outdoor: 5°F DB, 4°F WB)

<sup>5</sup>Heating at -13°F (Indoor: 70°F DB, 60°F WB // Outdoor: -13°F DB, -14°F WB)

Capacity varies based on the number of indoor units operating and the model of the Multi-zone Outdoor Unit. For reference to connected capacity charts, please refer to Multi-zone Outdoor Unit Operational Performance.

For actual capacity performance based on indoor unit type and number of indoor units connected, please refer to MXZ Operational Performance.

Although the maximum connectable capacity is 130%, the outdoor unit cannot provide more than 100% of the rated capacity.

Please utilize this over capacity capability for load shedding or applications where it is known that all connected units will NOT be operating at the same time.

<sup>\*</sup> Indoor/Outdoor Unit Operating Temperature Range (Cooling Air Temp [Maximum / Minimum]):

• Applications should be restricted to comfort cooling only; equipment cooling applications are not recommended for low ambient temperature conditions.

<sup>\*\*</sup> Outdoor Unit Operating Temperature Range (Cooling Thermal Lock-out / Re-start Temperatures; Heating Thermal Lock-out / Re-start Temperatures):

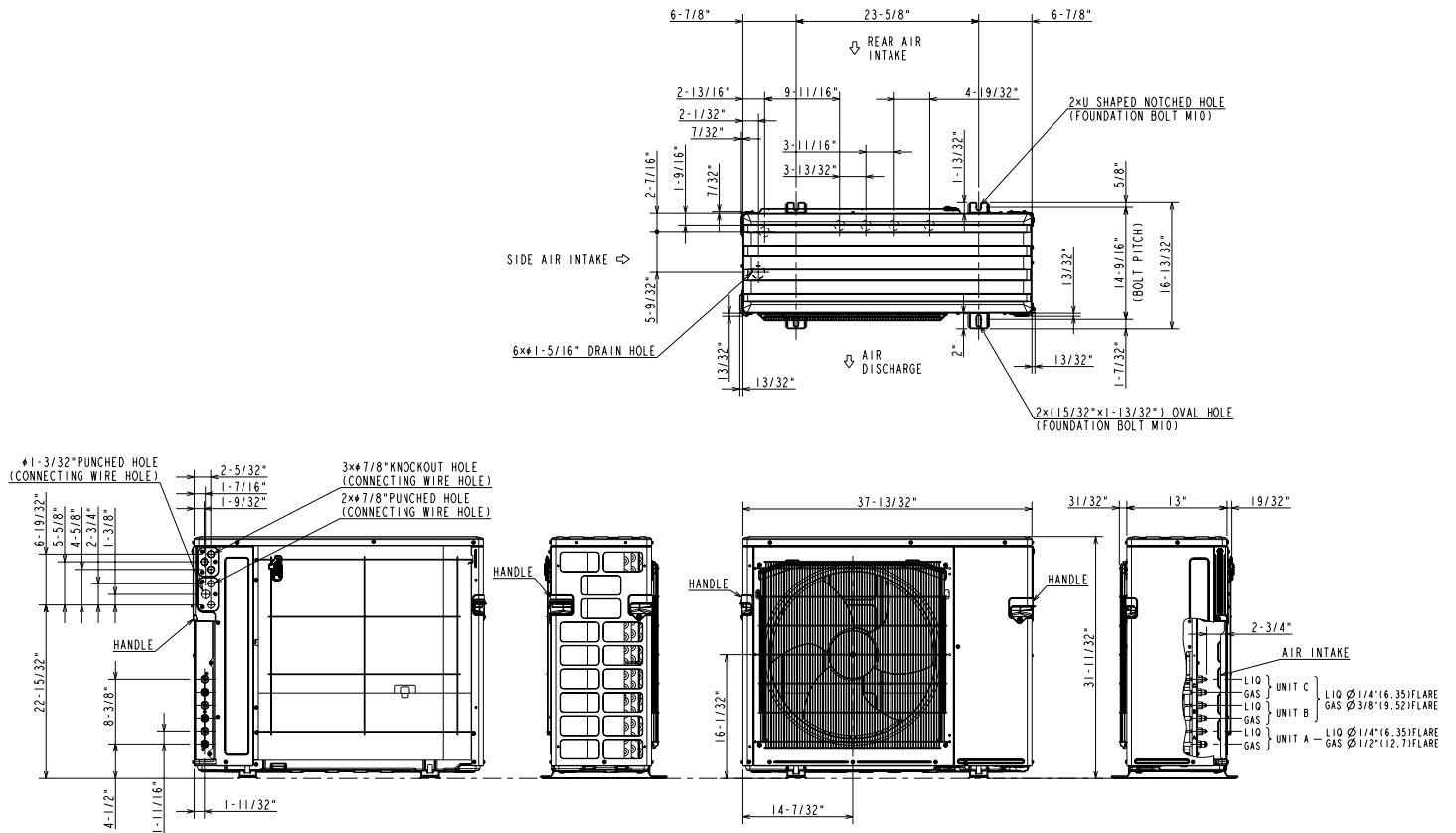
• System cuts out in heating mode and automatically restarts at these temperatures.

## OUTDOOR UNIT ACCESSORIES: MXZ-3D30NLHZ

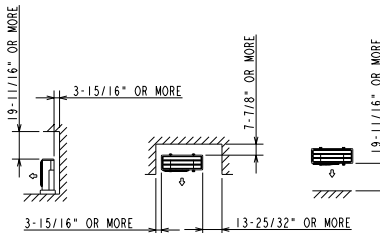
Ball Valve	Refrigeration Ball Valve - 1/2	BV12FFSI2
	Refrigeration Ball Valve - 1/4	BV14FFSI2
	Refrigeration Ball Valve - 3/8	BV38FFSI2
	Refrigeration Ball Valve - 5/8	BV58FFSI2
Mini-Split Wire	14 Gauge 4 wire Armored MiniSplit Cable250 ft roll	SW144-250
	14 Gauge 4 wire Armored MiniSplit Cable50 ft roll	SW144-50
	14 Gauge 4 wire MiniSplit Cable250 ft roll	S144-250
	14 Gauge 4 wire MiniSplit Cable50 ft roll	S144-50
	16 Gauge 4 wire Armored MiniSplit Cable250 ft roll	SW164-250
	16 Gauge 4 wire Armored MiniSplit Cable50 ft roll	SW164-50
	16 Gauge 4 wire MiniSplit Cable250 ft roll	S164-250
	16 Gauge 4 wire MiniSplit Cable50 ft roll	S164-50
Control Interface	M-NET Interface for MXZ	PAC-IF01MNT-E
Drain Socket	Drain Socket	PAC-SG60DS-E
Port Adaptor	Adaptor 1/2 x 3/8	PAC-SK88RJ-E
	Adaptor 1/2 x 5/8	PAC-SK89RJ-E
	Adaptor 1/4 x 3/8	PAC-493PI
	Adaptor 3/8 x 1/2	ADP3812
	Adaptor 3/8 x 5/8	PAC-SK90RJ-E
Snow/Rain Diverter	SnowRain Diverter	SRD-4
Stand	18 Single Fan Stand	QSMS1801M
	24 Single Fan Stand	QSMS2401M
	Condenser Wall Bracket	QSWB2000M-1
	Condenser Wall Bracket - Stainless Steel Finish	QSWBSS
	Outdoor Unit 3-14 inch Mounting Base Pair - Plastic	DSD-400P
	Outdoor Unit Stand 12 High	QSMS1201M
Hail Guards	Hail Guard	HG-A9
Mounting Pad	Condensing Unit Mounting Pad 16 x 36 x 3	ULTRILITE1
Control/Service Tool	Maintenance Tool Interface	PAC-USCMS-MN-1
Air Outlet Guide	Air Outlet Guide 1 Piece	PAC-SH96SG-E
NOTES		

# OUTDOOR UNIT DIMENSIONS: MXZ-3D30NLHZ

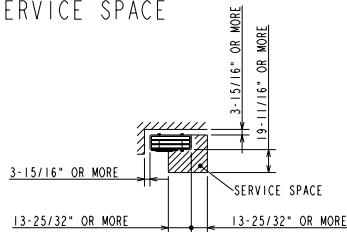
MXZ-3D24NLHZ-U1  
MXZ-3D30NLHZ-U1



## 1. FREE SPACE



## 2. SERVICE SPACE



1340 Satellite Boulevard Suwanee, GA 30024  
Toll Free: 800-433-4822 <https://mitsubishicomfort.com>



METUS\_2025-03\_PROPIN