

MLZ-KX12NL

12,000 BTU/H CEILING-MOUNTED INDOOR UNIT



Job Name:

System Reference:

Date:



GENERAL FEATURES

- Adjustable fan speeds and vane directions
- Auto Vane Control: Outlet vanes can be moved left and right, and up and down using the remote controller. This improved air flow control feature solves the problem of drafts
- Built-in condensate lift mechanism (19.6"): Reduces the need for an additional pump to remove condensate water
- Econo Cool: Econo Cool temporarily and automatically adjusts the airflow based on heat exchanger temperature. The set temperature is increased slightly, which saves energy, while maintaining comfort.
- Fits between 16" joists spacing
- Multiple control options including: Hand-held Remote Controller (provided with unit), comfort app, third-party interfaces and both wired and wireless controllers
- Serviceable from the bottom (electrical and flare connections)
- Stylish, square design panel
- Washable antibacterial and deodorizing filter
- Weekly Timer Function: Easily set desired temperatures and operation ON/OFF times to match lifestyle patterns. Reduce wasted energy consumption by using the timer to prevent forgetting to turn off the unit and eliminate temperature setting adjustments.
- Wi-Fi enabled units pair with the Comfort app for complete control over temperature, fan speeds, modes, schedules, and more.

Specifications			System
Unit Type			MLZ-KX12NL
Cooling Capacity (Nominal) ^{1,3}	Cooling Capacity (Nominal)	Btu/h	12,000
Heating Capacity (Nominal) ^{2,3}	Heating Capacity (Nominal)	Btu/h	15,400
Electrical	Voltage, Phase, Frequency	V AC / V AC, ø, Hz	208 / 230, 1, 60
	Voltage: Indoor - Outdoor, S1-S2	V AC	208/230
	MCA	A	1
Indoor Unit	Fan Motor Type		DC Motor
	Fan Motor Output	W	30
	Airflow Rate at Cooling, Dry	CFM	212, 258, 297, 332
	Airflow Rate at Heating, Dry	CFM	212, 272, 311, 350
	Sound Pressure Level [Cooling]	dB (A)	27, 32, 36, 40
	Sound Pressure Level [Heating]	dB (A)	26, 32, 36, 40
	DBC on HEX (Yes or No)		No
	Unit Dimensions (W x D x H)	inch x inch x inch [mm x mm x mm]	43-3/8 x 14-3/16 x 7-5/16 [1,102 x 360 x 185]
	Package Dimensions (W x D x H)	inch x inch x inch [mm x mm x mm]	46-3/8 x 11-3/16 x 15-3/4 [1,177 x 284 x 400]
	Unit Weight	lbs [kg]	34 [15.50]
Refrigerant	Package Weight	lbs [kg]	42 [19]
	Type		R454B
Piping	Liquid Pipe Size O.D.	inch [mm]	1/4 [6.35]
	Gas Pipe Size O.D.	inch [mm]	3/8 [9.52]
Drain Pipe	Drain Pipe Size O.D.	inch [mm]	1-1/16 [26]
NOTES			
¹ Cooling at 95°F (Indoor: 80°F DB, 67°F WB // Outdoor: 95°F DB, 75°F WB)			
² Heating at 47°F (Indoor: 70°F DB, 60°F WB // Outdoor: 47°F DB, 43°F WB)			
³ Nominal capacity only. Actual capacity output varies based on the system-specific configuration.			

INDOOR UNIT ACCESSORIES: MLZ-KX12NL

Drain Hose	Flexible Mini-Split Drain Hose	DRX-16
Lineset	15 x 1/4 x 15 3/8 Lineset Twin-Tube Insulation	MLS143812T-15
	30 x 1/4 x 30 3/8 Lineset Twin-Tube Insulation	MLS143812T-30
	50 x 1/4 x 50 3/8 Lineset Twin-Tube Insulation	MLS143812T-50
	65 x 1/4 x 65 3/8 Lineset Twin-Tube Insulation	MLS143812T-65
Power Supplies and Auxiliary Components	Backup Heat Relay Kit Adapter for CN24 or CN152 Connector	CN24RELAY-KIT-CM3
Wireless Remote Controller	Lockdown Bracket for Wireless Handheld Remote Controllers	RCMKP1CB
	RedLINK Wireless Remote Controller	MHK2
Remote Sensor	Remote Temperature Sensor for MFZ MLZ and MSZ models	M21EAA307
	Wireless temperature and humidity sensor for the Comfort app	PAC-USWHS003-TH-1
Condensate	Blue Diamond Advanced Mini Condensate Pump w Reservoir Sensor 208230V recommended	X87-721
	Blue Diamond MaxiBlue Advanced Mini Condensate Pump w Reservoir Sensor 110V up to 48000 BTUH recommended	X87-711
	Blue Diamond MegaBlue Advanced Condensate Pump w Reservoir Sensor	X87-835
	Blue Diamond MicroBlue Mini Condensate Pump 110208230V up to 18000 BTUH	X86-003
	Blue Diamond Sensor Extension Cable 15 Ft	C13-103
	Refco Condensate Pump 100-240 VAC up to 120000 BTUH	COMBI
	Sauermann Condensate Pump	SI30-230
Control Interface	Airzone Wired Blueface Controller Black	AZZBSBLUEZEROCN
	Airzone Wired Blueface Controller White	AZZBSBLUEZEROCB
	Airzone Wireless Lite Controller Black	AZZBSLITERN
	Airzone Wireless Lite Controller White	AZZBSLITERB
	Airzone Wireless Think Controller Black	AZZBSTHINKRN
	Airzone Wireless Think Controller White	AZZBSTHINKRB
	IT Extender for kumo station	PAC-WHS01IE-E
	kumo station for the Comfort app	PAC-WHS01HC-E
	M-Net I/O Control Interface for M-Series ²	MAC-334IF-E
	Procon BACnet and Modbus Interface	PAC-UKPRC001-CN-1
	Thermostat Interface for 3rd Party Thermostats	PAC-US445CN-1
	Wireless Interface Adapter for the Comfort app	PAC-USWHS002-WF-2
Disconnect Switch	30A600VUL fits 2 X 4 utility box - Black	TAZ-MS303
	30A600VUL fits 2 X 4 utility box - White	TAZ-MS303W
Wired Remote Controller	Deluxe Wired MA Remote Controller	PAR-42MAAUB
	Simple Direct Wired Remote Controller	PAC-SDW01RC-1
	Simple MA Remote Controller ¹	PAC-YT53CRAU-J
	Touch MA Wired Remote Controller ¹	PAR-CT01MAU-SB
Grille	Grille (required)	MLP-449WU
Filter	Anti-allergy Enzyme Filter	MAC-408FT-E
	Microparticle Filter	MAC-EMF515FT-E

NOTES

²Allows IDU Connection to MA Controller:

Deluxe MA Remote Controller

Simple MA Controller

Touch MA Controller

¹Requires MAC-334IF-E Interface to connect MA controller

¹Requires MAC-334IF-E Interface to connect MA controller

¹Requires MAC-334IF-E Interface to connect MA controller

¹Requires MAC-334IF-E Interface to connect MA controller

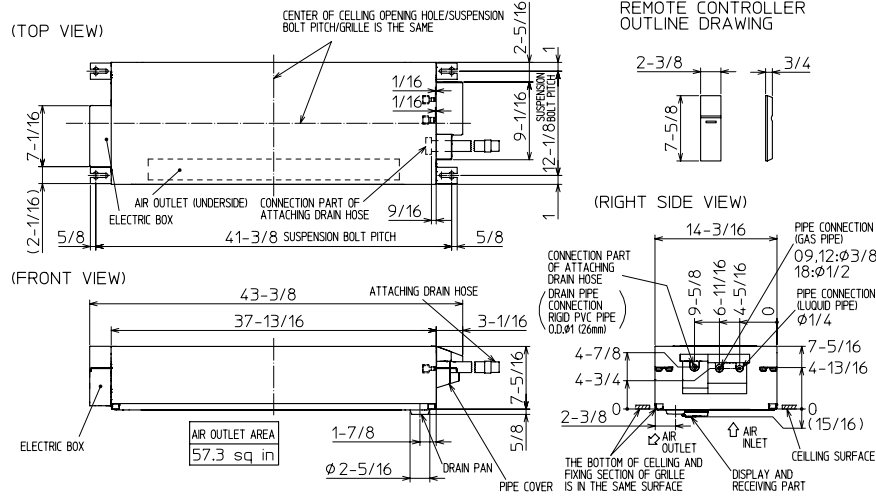
INDOOR UNIT DIMENSIONS: MLZ-KX12NL

MLZ-KX09NL- U1

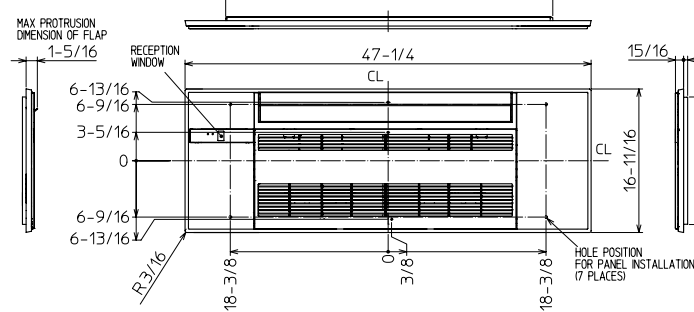
MLZ-KX12NL- U1

MLZ-KX18NL- U1

INDOOR UNIT OUTLINE DRAWING



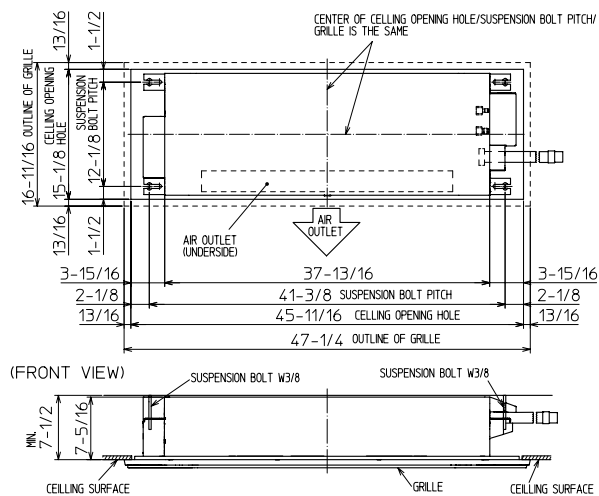
GRILLE OUTLINE DRAWING (MLP-449WU)



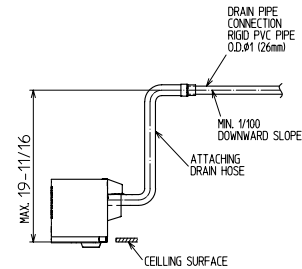
		KX09/12NL	KX18NL
EXTENSION PIPE	LIQUID PIPE O.D.	Ø1/4	
	GAS PIPE O.D.	Ø3/8	Ø1/2
CONNECTIONS OF PIPE	LIQUID PIPE	FLARED CONNECTION Ø1/4	
	GAS PIPE	FLARED CONNECTION Ø3/8	FLARED CONNECTION Ø1/2
DRAIN HOSE		HEAT INSULATOR O.D. Ø1-1/4	CONNECTION I.D. Ø1
		EFFECTIVE LENGTH 18-7/8	
DRAIN PIPE CONNECTION		RIGID PVC PIPE O.D. Ø1 (26mm)	

NOTE1. CUT THE DRAIN HOSE (ACCESSORY) FOR USE, IF NECESSARY.

INDOOR UNIT DETAIL VIEW (TOP VIEW)



THE METHOD FOR STANDING DRAIN FROM INDOOR UNIT
※ CUT THE DRAIN HOSE (ACCESSORY) FOR USE, IF NECESSARY.



1340 Satellite Boulevard Suwanee, GA 30024
Toll Free: 800-433-4822 <https://mitsubishicomfort.com>

