

# MLZ-KX06NL

## 6,000 BTU/H CEILING-MOUNTED INDOOR UNIT



Job Name:

System Reference:

Date:



### GENERAL FEATURES

- Adjustable fan speeds and vane directions
- Auto Vane Control: Outlet vanes can be moved left and right, and up and down using the remote controller. This improved air flow control feature solves the problem of drafts
- Built-in condensate lift mechanism (19.6"): Reduces the need for an additional pump to remove condensate water
- Econo Cool: Econo Cool temporarily and automatically adjusts the airflow based on heat exchanger temperature. The set temperature is increased slightly, which saves energy, while maintaining comfort.
- Fits between 16" joists spacing
- Multiple control options including: Hand-held Remote Controller (provided with unit), comfort app, third-party interfaces and both wired and wireless controllers
- Serviceable from the bottom (electrical and flare connections)
- Stylish, square design panel
- Washable antibacterial and deodorizing filter
- Weekly Timer Function: Easily set desired temperatures and operation ON/OFF times to match lifestyle patterns. Reduce wasted energy consumption by using the timer to prevent forgetting to turn off the unit and eliminate temperature setting adjustments.
- Wi-Fi enabled units pair with the Comfort app for complete control over temperature, fan speeds, modes, schedules, and more.

Specifications			System
Unit Type			MLZ-KX06NL
Cooling Capacity (Nominal) <sup>1,3</sup>	Cooling Capacity (Nominal)	Btu/h	6,000
Heating Capacity (Nominal) <sup>2,3</sup>	Heating Capacity (Nominal)	Btu/h	7,200
Electrical	Voltage, Phase, Frequency	V AC / V AC, , Hz	208 / 230, 1, 60
	MCA	A	1
	MOCP	A	1
Indoor Unit	Fan Motor Type		DC Motor
	Fan Motor Output	W	30
	Airflow Rate at Cooling, Dry	CFM	152, 166, 184, 198
	Airflow Rate at Heating, Dry	CFM	152, 173, 194, 212
	Sound Pressure Level [Cooling]	dB (A)	29, 31, 34, 36
	Sound Pressure Level [Heating]	dB (A)	29, 32, 35, 37
		inch [mm]	1-1/16 [26]
	Unit Dimensions (W x D x H)	inch x inch x inch [mm x mm x mm]	33-3/16 x 11-7/8 x 7-11/16 [842 x 301 x 194]
	Package Dimensions (W x D x H)	inch x inch x inch [mm x mm x mm]	35-7/8 x 14-3/16 x 12-1/4 [910 x 360 x 310]
	Unit Weight	lbs [kg]	25 [11.30]
Refrigerant	Package Weight	lbs [kg]	29 [13]
	Type		R454B
Piping	Liquid Pipe Size O.D. [Flared]	inch [mm]	1/4 [6.35]
	Gas Pipe Size O.D. [Flared]	inch [mm]	3/8 [9.52]
Drain Pipe	Drain Pipe Size O.D.	inch [mm]	26 [1-1/16]
NOTES			
<sup>1</sup> Cooling at 95°F (Indoor: 80°F DB, 67°F WB // Outdoor: 95°F DB, 75°F WB)			
<sup>2</sup> Heating at 47°F (Indoor: 70°F DB, 60°F WB // Outdoor: 47°F DB, 43°F WB)			
<sup>3</sup> Nominal capacity only. Actual capacity output varies based on the system-specific configuration.			

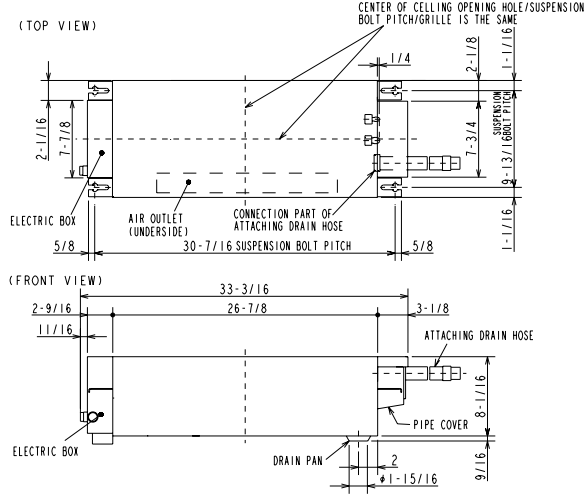
INDOOR UNIT ACCESSORIES: MLZ-KX06NL

Lineset	15 x 1/4 x 15 3/8 Lineset Twin-Tube Insulation	MLS143812T-15
	30 x 1/4 x 30 3/8 Lineset Twin-Tube Insulation	MLS143812T-30
	50 x 1/4 x 50 3/8 Lineset Twin-Tube Insulation	MLS143812T-50
	65 x 1/4 x 65 3/8 Lineset Twin-Tube Insulation	MLS143812T-65
<div>NOTES</div> <div><sup>2</sup>Allows IDU Connection to MA Controller: Deluxe MA Remote Controller Simple MA Controller Touch MA Controller <sup>1</sup>Requires MAC-334IF-E Adapter <sup>1</sup>Requires MAC-334IF-E Adapter <sup>1</sup>Requires MAC-334IF-E Adapter</div>		

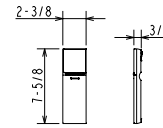
# INDOOR UNIT DIMENSIONS: MLZ-KX06NL

## MLZ-KX06NL-U1

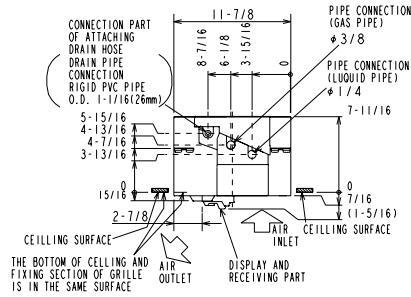
### INDOOR UNIT OUTLINE DRAWING



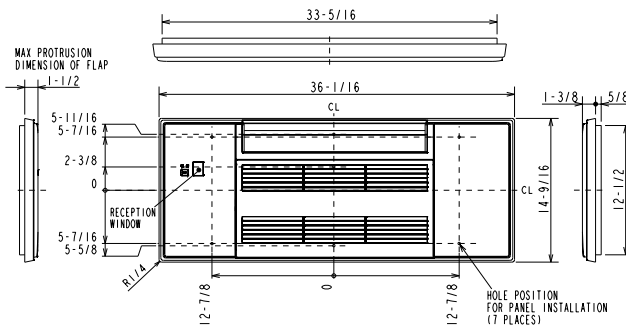
### REMOTE CONTROLLER OUTLINE DRAWING



### (RIGHT SIDE VIEW)



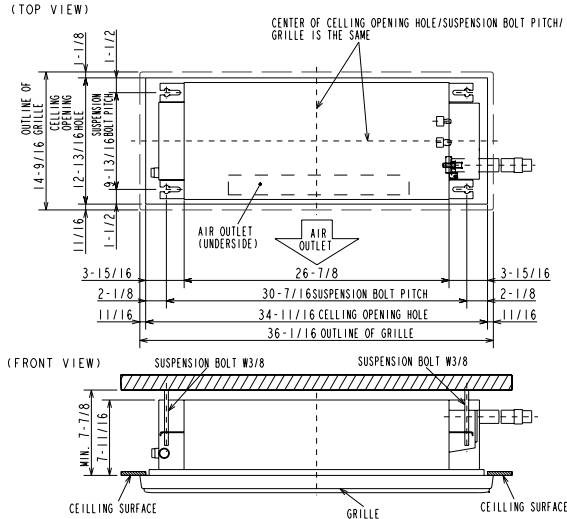
### GRILLE OUTLINE DRAWING (MLP-448WU)



EXTENSION PIPE	LIQUID PIPE O.D.	1/4
	GAS PIPE O.D.	3/8
CONNECTIONS OF PIPE	LIQUID PIPE	FLARED CONNECTION 1/4
	GAS PIPE	FLARED CONNECTION 3/8
DRAIN HOSE	HEAT INSULATOR O.D.	CONNECTION I.D. EFFECTIVE LENGTH
	1-5/16	1 18-15/16
DRAIN PIPE CONNECTION RIGID PVC PIPE O.D. 1-1/16 (26mm)		

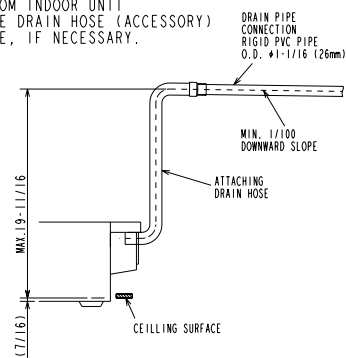
NOTE1. CUT THE DRAIN HOSE (ACCESSORY) FOR USE, IF NECESSARY.

### INDOOR UNIT DETAIL VIEW



### THE METHOD FOR STANDING DRAIN FROM INDOOR UNIT

- CUT THE DRAIN HOSE (ACCESSORY) FOR USE, IF NECESSARY.



1340 Satellite Boulevard Suwanee, GA 30024  
Toll Free: 800-433-4822 <https://mitsubishicomfort.com>

