

MFZ-KX18NL & SUZ-AA18NLHZ  
18,000 BTU/H FLOOR-MOUNTED INDOOR UNIT  
18,000 BTU/H HYPER HEAT PUMP OUTDOOR UNIT



Job Name:

System Reference:

Date:



Indoor Unit.....MFZ-KX18NL

Outdoor Unit.....SUZ-AA18NLHZ



#### INDOOR UNIT FEATURES

- Econo Cool: Temporarily and automatically adjusts the airflow based on heat exchanger temperature. The set temperature is increased slightly, which saves energy, while maintaining comfort.
- Floor front panel access to the filter for ease of cleaning
- Mounts on floor or 5" above floor
- Multi-flow Vane for faster heating
- Multiple control options including: Hand-held Remote Controller (provided with unit), comfort app, third-party interfaces and both wired and wireless controllers
- Multiple fan speed options: Low, Medium, High, Powerful, Auto
- Nano Platinum Filter: This filter has a large capture area and incorporates nanometer-sized platinum-ceramic particles and is designed to reduce the presence of certain nonliving particles, while deodorizing the circulating air.
- Perfect for difficult areas that may be smaller or don't have usable space on the walls
- Powerful Mode: Temporarily drops or raises the set point and fan speed in order to quickly bring the room to the desired temperature.
- Quiet operation: Outdoor units are as quiet as a typical conversation, and most indoor units are whisper quiet.
- Unit can be recessed mounted into wall
- Up and down swing-mode: An indoor unit with this capability can move air up and down throughout the room like an oscillating fan using the horizontal vanes.
- Wi-Fi enabled units pair with the Comfort app for complete control over temperature, fan speeds, modes, schedules, and more.

#### OUTDOOR UNIT FEATURES

- Blue Fin Coating: An anti-corrosion treatment applied to the aluminum fins of the heat exchanger of the outdoor unit to protect against corrosion caused by salt, sulfur, and other airborne contaminants, especially in coastal and industrial areas.
- Built-in base pan heater
- Hot-Start Technology: Hot-Start Technology ensures the fan only activates once the heat exchanger is warm, preventing cold air blasts during start-up.
- Hyper-Heating INVERTER® (H2i®): 100% heating capacity down to 5° F with guaranteed heating down to -13° F.
- Joint Lap DC Motor: Innovative Joint Lap DC Motor leads to high efficiency and reliability
- Outdoor unit directed power: The outdoor unit powers the indoor unit, and should a power outage occur, the system is automatically restarted when power returns
- Pulse Amplitude Modulation technology: Pulse Amplitude Modulation technology enhances energy efficiency by adjusting the power supply to optimize compressor performance, ensuring precise capacity control and reduced energy consumption.
- Quiet operation: Quiet operation units are as quiet as a typical conversation, and most indoor units are whisper quiet.

# SPECIFICATIONS: MFZ-KX18NL & SUZ-AA18NLHZ

|                              |   |                                      |  |
|------------------------------|---|--------------------------------------|--|
| Cooling at 95F <sup>1</sup>  | Maximum Capacity                              | Btu/h                                | 18,000   |
|                              | Rated Capacity                                | Btu/h                                | 18,000   |
|                              | Minimum Capacity                              | Btu/h                                | 5,000  |
|                              | Maximum Power Input                           | W                                    | 1,450  |
|                              | Rated Power Input                             | W                                    | 1,450  |
|                              | Moisture Removal                              | Pints/h                              | 4.1  |
|                              | Sensible Heat Factor                          | -                                    | 0.75   |
| Heating at 47F <sup>2</sup>  | Power Factor [208V / 230V]                    | %                                    | 98 / 98  |
|                              | Maximum Capacity                              | Btu/h                                | 22,500   |
|                              | Rated Capacity                                | Btu/h                                | 20,000   |
|                              | Minimum Capacity                              | Btu/h                                | 8,400  |
|                              | Maximum Power Input                           | W                                    | 2,110  |
|                              | Rated Power Input                             | W                                    | 1,690  |
|                              | Power Factor [208V / 230V]                    | %                                    | 98 / 98  |
| Heating at 17F <sup>3</sup>  | Maximum Capacity                              | Btu/h                                | 20,000   |
|                              | Rated Capacity                                | Btu/h                                | 13,400   |
|                              | Maximum Power Input                           | W                                    | 2,910  |
|                              | Rated Power Input                             | W                                    | 1,490  |
| Heating at 5F <sup>4</sup>   | Maximum Capacity                              | Btu/h                                | 20,000   |
|                              | Maximum Power Input                           | W                                    | 2,930  |
| Heating at -13F <sup>5</sup> | Maximum Capacity                              | Btu/h                                | 12,100   |
| Efficiency                   | SEER2   |                                      | 17.2   |
|                              | EER2 <sup>1</sup>                             |                                      | 12.4   |
|                              | HSPF2 [IV]                                    |                                      | 9.9  |
|                              | COP at 47°F <sup>2</sup>                      |                                      | 3.4  |
|                              | COP at 17°F at Maximum Capacity <sup>3</sup>  |                                      | 2  |
|                              | COP at 5°F at Maximum Capacity <sup>4</sup>   |                                      | 2  |
|                              | COP at -13°F at Maximum Capacity <sup>5</sup> |                                      | 1.45   |
| Electrical                   | ENERGY STAR® Certified                        |                                      | Yes  |
|                              | Voltage, Phase, Frequency                     | V AC / V AC, , Hz                    | 208 / 230, 1, 60                               |
|                              | Guaranteed Voltage Range                      | V AC                                 | 198 - 253                                      |
|                              | Voltage: Indoor - Outdoor, S1-S2              | V AC                                 | 208/230  |
|                              | Voltage: Indoor - Outdoor, S2-S3              | V DC                                 | 12-24  |
|                              | Short-circuit Current Rating [SCCR]           | kA                                   | 5  |
|                              | Recommended Fuse/Breaker Size (Outdoor)       | A                                    | 30   |
| Indoor Unit                  | Recommended Wire Size [Indoor - Outdoor]      | AWG                                  | 14   |
|                              | MCA   | A                                    | 1  |
|                              | Fan Motor Output                              | W                                    | 40   |
|                              | Airflow Rate at Cooling, Dry                  | CFM                                  | 198, 254, 328, 420, 491                        |
|                              | Airflow Rate at Cooling, Wet                  | CFM                                  | 168, 216, 279, 357, 417                        |
|                              | Airflow Rate at Heating, Dry                  | CFM                                  | 212, 268, 328, 399, 470                        |
|                              | Sound Pressure Level [Cooling]                | dB (A)                               | 28, 33, 39, 45, 50                             |
|                              | Sound Pressure Level [Heating]                | dB (A)                               | 29, 35, 40, 45, 49                             |
|                              | Dual Barrier Coating on Heat Exchanger        |                                      | No   |
|                              | Unit Dimensions (W x D x H)                   | inch x inch x inch<br>[mm x mm x mm] | 29-1/2 x 8-7/16 x 23-5/8 [750 x 215 x 600]     |
|                              | Package Dimensions (W x D x H)                | inch x inch x inch<br>[mm x mm x mm] | 27-9/16 x 11-3/16 x 32-11/16 [700 x 300 x 830] |
|                              | Unit Weight                                   | lbs [kg]                             | 33 [15]  |
|                              | Package Weight                                | lbs [kg]                             | 40 [18]  |
|                              | Fan Motor Type                                |                                      | DC Motor                                       |
| IDU Operating Temp. Range    | Cooling Intake Air Temp [Maximum / Minimum]   | °FDB, °FWB / °FDB, °FWB              | 90, 73 / 67, 57                                |
|                              | Heating Intake Air Temp [Maximum / Minimum]   | °FDB                                 | 80 / 70  |

## NOTES

- <sup>1</sup>Cooling at 95°F (Indoor: 80°F DB, 67°F WB // Outdoor: 95°F DB, 75°F WB)  
<sup>2</sup>Heating at 47°F (Indoor: 70°F DB, 60°F WB // Outdoor: 47°F DB, 43°F WB)  
<sup>3</sup>Heating at 17°F (Indoor: 70°F DB, 60°F WB // Outdoor: 17°F DB, 15°F WB)  
<sup>4</sup>Heating at 5°F (Indoor: 70°F DB, 60°F WB // Outdoor: 5°F DB, 4°F WB)  
<sup>5</sup>Heating at -13°F (Indoor: 70°F DB, 60°F WB // Outdoor: -13°F DB, -14°F WB)  
<sup>\*</sup> Indoor/Outdoor Unit Operating Temperature Range (Cooling Air Temp [Maximum / Minimum]):  
• Applications should be restricted to comfort cooling only; equipment cooling applications are not recommended for low ambient temperature conditions.  
• Outdoor Unit Operating Temperature Range (Cooling Thermal Lock-out / Re-start Temperatures; Heating Thermal Lock-out / Re-start Temperatures):  
• System cuts out in heating mode and automatically restarts at these temperatures.

# SPECIFICATIONS: MFZ-KX18NL & SUZ-AA18NLHZ

|                           |  |                                      |   |
|---------------------------|--|--------------------------------------|---|
| Outdoor Unit              | MCA  | A                                    | 25                                      |
|                           | MOCP   | A                                    | 42                                      |
|                           | Fan Motor Output   | W                                    | 50                                      |
|                           | Airflow Rate Cooling                                       | CFM                                  | 2,193                                   |
|                           | Airflow Rate Heating                                       | CFM                                  | 1,949                                   |
|                           | Defrost Method   |                                      | Reverse Cycle                           |
|                           | Coating on Heat Exchanger (Bluefin, Sea Coast)             |                                      | Yes, Yes                                |
|                           | Sound Pressure Level, Cooling <sup>1</sup>                 | dB (A)                               | 55                                      |
|                           | Sound Pressure Level, Heating <sup>2</sup>                 | dB (A)                               | 55                                      |
|                           | Compressor Type  |                                      | Twin Rotary                             |
|                           | Compressor Model   |                                      | SRB172FQHMT                             |
|                           | Compressor Oil [Type // Charge]                            | Type // oz                           | RM68EH // 14.54                         |
|                           | External Finish Color                                      |                                      | Munsell No.3Y 7.8/1.1                   |
|                           | Base Pan Heater  |                                      | Built-in                                |
|                           | Unit Dimensions (W x D x H)                                | inch x inch x inch<br>[mm x mm x mm] | 33-1/16 x 13 x 34-5/8 [840 x 330 x 880] |
|                           | Package Dimensions (W x D x H)                             | inch x inch x inch<br>[mm x mm x mm] | 38-5/8 x 16-9/16 x 39 [980 x 420 x 990] |
| ODU Operating Temp. Range | Unit Weight  | lbs [kg]                             | 115 [52.16]                             |
|                           | Package Weight   | lbs [kg]                             | 133 [60.33]                             |
|                           | Cooling Intake Maximum Air Temp [Maximum / Minimum*]       | °FDB                                 | 115 / 14                                |
|                           | Cooling Thermal Lock-out / Re-start Temperatures**         | °FDB                                 | -1 / 3                                  |
|                           | Heating Air Temp [Maximum / Minimum]                       | °FDB, °FWB / °FDB, °FWB              | 75, 65 / -13, -14                       |
| Refrigerant               | Heating Thermal Lock-out / Re-start Temperatures**         | °FDB                                 | -22.5 / -14                             |
|                           | Type   |                                      | R454B                                   |
|                           | Pre-Charged Refrigerant Amount                             | lbs                                  | 3                                       |
|                           | Maximum Pre-Charged Piping Length                          | ft [m]                               | 25 [7.60]                               |
|                           | Additional Refrigerant Charge Per Additional Piping Length | oz/ft                                | 0.22                                    |
| Piping                    | Gas Pipe Size O.D. [Flared]                                | inch [mm]                            | 1/2 [12.72]                             |
|                           | Liquid Pipe Size O.D. [Flared]                             | inch [mm]                            | 1/4 [6.35]                              |
|                           | Maximum Piping Length                                      | ft [m]                               | 100 [30.48]                             |
|                           | Maximum Height Difference                                  | ft [m]                               | 50 [15.24]                              |
|                           | Maximum Number of Bends                                    |                                      | 10                                      |

## NOTES

<sup>1</sup>Cooling at 95°F (Indoor: 80°F DB, 67°F WB // Outdoor: 95°F DB, 75°F WB)

<sup>2</sup>Heating at 47°F (Indoor: 70°F DB, 60°F WB // Outdoor: 47°F DB, 43°F WB)

<sup>3</sup>Heating at 17°F (Indoor: 70°F DB, 60°F WB // Outdoor: 17°F DB, 15°F WB)

<sup>4</sup>Heating at 5°F (Indoor: 70°F DB, 60°F WB // Outdoor: 5°F DB, 4°F WB)

<sup>5</sup>Heating at -13°F (Indoor: 70°F DB, 60°F WB // Outdoor: -13°F DB, -14°F WB)

\* Indoor/Outdoor Unit Operating Temperature Range (Cooling Air Temp [Maximum / Minimum]):

• Applications should be restricted to comfort cooling only; equipment cooling applications are not recommended for low ambient temperature conditions.

\*\* Outdoor Unit Operating Temperature Range (Cooling Thermal Lock-out / Re-start Temperatures; Heating Thermal Lock-out / Re-start Temperatures):

• System cuts out in heating mode and automatically restarts at these temperatures.

## INDOOR UNIT ACCESSORIES: MFZ-KX18NL

|  |  |                   |
|--|--|-------------------|
| Control Interface  | Airzone Wired Blueface Controller Black  | AZZBSBLUEZEROCN   |
|  | Airzone Wired Blueface Controller White  | AZZBSBLUEZEROCB   |
|  | Airzone Wireless Lite Controller Black   | AZZBSLITERN       |
|  | Airzone Wireless Lite Controller White   | AZZBSLITERB       |
|  | Airzone Wireless Think Controller Black  | AZZBSTHINKRN      |
|  | Airzone Wireless Think Controller White  | AZZBSTHINKRB      |
|  | IT Extender for kumo station   | PAC-WHS01IE-E     |
|  | kumo station for the Comfort app   | PAC-WHS01HC-E     |
|  | M-Net I/O Control Interface for M-Series <sup>2</sup>  | MAC-334IF-E       |
|  | Procon BACnet and Modbus Interface   | PAC-UKPRC001-CN-1 |
|  | Thermostat Interface for 3rd Party Thermostats   | PAC-US445CN-1     |
|  | Wireless Interface Adapter for the Comfort app   | PAC-USWHS002-WF-2 |
| Remote Sensor  | Remote Temperature Sensor for MFZ MLZ and MSZ models   | M21EAA307         |
|  | Wireless temperature and humidity sensor for the Comfort app   | PAC-USWHS003-TH-1 |
| Wired Remote Controller  | Deluxe Wired MA Remote Controller <sup>1</sup>   | PAR-42MAAUB       |
|  | Simple Direct Wired Remote Controller  | PAC-SDW01RC-1     |
|  | Simple MA Remote Controller <sup>1</sup>   | PAC-YT53CRAU-J    |
|  | Touch MA Wired Remote Controller <sup>1</sup>  | PAR-CT01MAU-SB    |
| Filter   | Anti-allergy Enzyme Filter   | MAC-408FT-E       |
| Condensate   | Blue Diamond Advanced Mini Condensate Pump w Reservoir Sensor 208230V recommended                        | X87-721           |
|  | Blue Diamond MaxiBlue Advanced Mini Condensate Pump w Reservoir Sensor 110V up to 48000 BTUH recommended | X87-711           |
|  | Blue Diamond MegaBlue Advanced Condensate Pump w Reservoir Sensor  | X87-835           |
|  | Blue Diamond MicroBlue Mini Condensate Pump 110208230V up to 18000 BTUH                                  | X86-003           |
|  | Blue Diamond Sensor Extension Cable 15 Ft  | C13-103           |
|  | Refco Condensate Pump 100-240 VAC up to 120000 BTUH  | COMBI             |
|  | Sauermann Condensate Pump  | SI30-230          |
| Power Supplies and Auxiliary Components  | Backup Heat Relay Kit Adapter for CN24 or CN152 Connector  | CN24RELAY-KIT-CM3 |
| Lineset  | 100 x 1/4 x 100 1/2 Lineset Twin-Tube Insulation   | MLS141212T-100    |
|  | 15 x 1/4 x 15 1/2 Lineset Twin-Tube Insulation   | MLS141212T-15     |
|  | 30 x 1/4 x 30 1/2 Lineset Twin-Tube Insulation   | MLS141212T-30     |
|  | 50 x 1/4 x 50 1/2 Lineset Twin-Tube Insulation   | MLS141212T-50     |
|  | 65 x 1/4 x 65 1/2 Lineset Twin-Tube Insulation   | MLS141212T-65     |
| Wireless Remote Controller   | Lockdown Bracket for Wireless Handheld Remote Controllers  | RCMKP1CB          |
|  | RedLINK Wireless Remote Controller   | MHK2              |
| Floor Mount Air Guide  | Floor Mount Air Guide  | MAC-760FD-E       |
| Disconnect Switch  | 30A600VUL fits 2 X 4 utility box - Black   | TAZ-MS303         |
|  | 30A600VUL fits 2 X 4 utility box - White   | TAZ-MS303W        |
| Drain Hose   | Flexible Mini-Split Drain Hose   | DRX-16            |
| NOTES<br><sup>2</sup> Allows IDU Connection to MA Controller:<br>Deluxe MA Remote Controller<br>Simple MA Controller<br>Touch MA Controller<br><sup>1</sup> Requires MAC-334IF-E Adapter<br><sup>1</sup> Requires MAC-334IF-E Adapter<br><sup>1</sup> Requires MAC-334IF-E Adapter |  |                   |

## OUTDOOR UNIT ACCESSORIES: SUZ-AA18NLHZ

|                      |   |                |
|----------------------|---|----------------|
| Mini-Split Wire      | 14 Gauge 4 wire Armored MiniSplit Cable250 ft roll  | SW144-250      |
|                      | 14 Gauge 4 wire Armored MiniSplit Cable50 ft roll   | SW144-50       |
|                      | 14 Gauge 4 wire MiniSplit Cable250 ft roll          | S144-250       |
|                      | 14 Gauge 4 wire MiniSplit Cable50 ft roll           | S144-50        |
| Stand                | 18 Single Fan Stand                                 | QSMS1801M      |
|                      | 24 Single Fan Stand                                 | QSMS2401M      |
|                      | Condenser Wall Bracket                              | QSWB2000M-1    |
|                      | Condenser Wall Bracket - Stainless Steel Finish     | QSWBSS         |
|                      | Outdoor Unit 3-14 inch Mounting Base Pair - Plastic | DSD-400P       |
|                      | Outdoor Unit Stand 12 High                          | QSMS1201M      |
| Control/Service Tool | M- & P-Series Maintenance Tool Cable Set            | M21EC0397      |
|                      | Maintenance Tool Interface                          | PAC-USCMS-MN-1 |
| Drain Socket         | Drain Socket  | MAC-871DS      |
| Mounting Pad         | Condensing Unit Mounting Pad 16 x 36 x 3            | ULTRILITE1     |
| Muffler              | Muffler for Connection to MFZ-KX                    | MAC-002MF-E    |
| Air Outlet Guide     | Air Outlet Guide                                    | MAC-886SG-E    |
| Snow/Rain Diverter   | SnowRain Diverter                                   | SRD-3          |
| NOTES                |   |                |

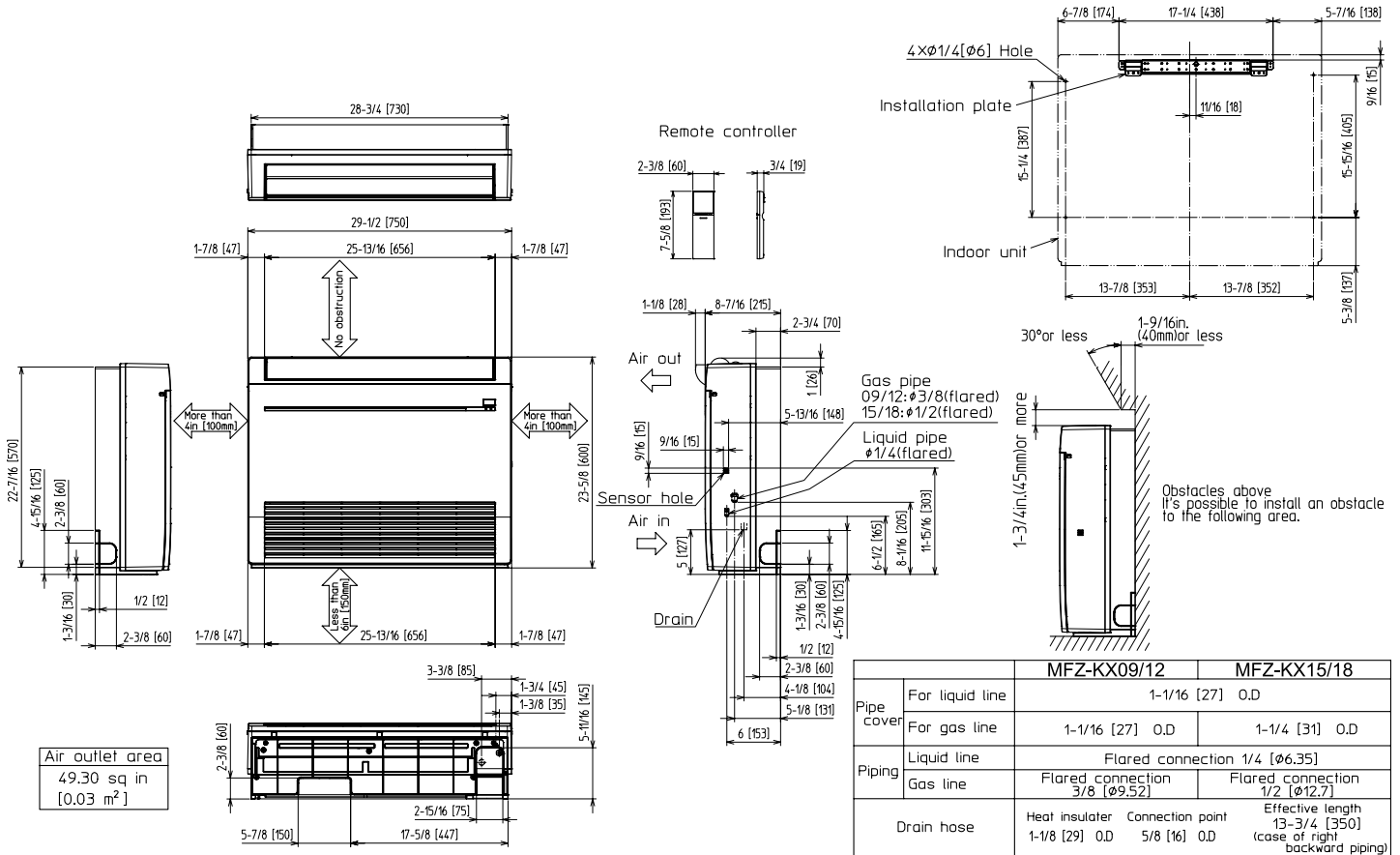
# INDOOR UNIT DIMENSIONS: MFZ-KX18NL

MFZ-KX09NL- U1

MFZ-KX12NL- U1

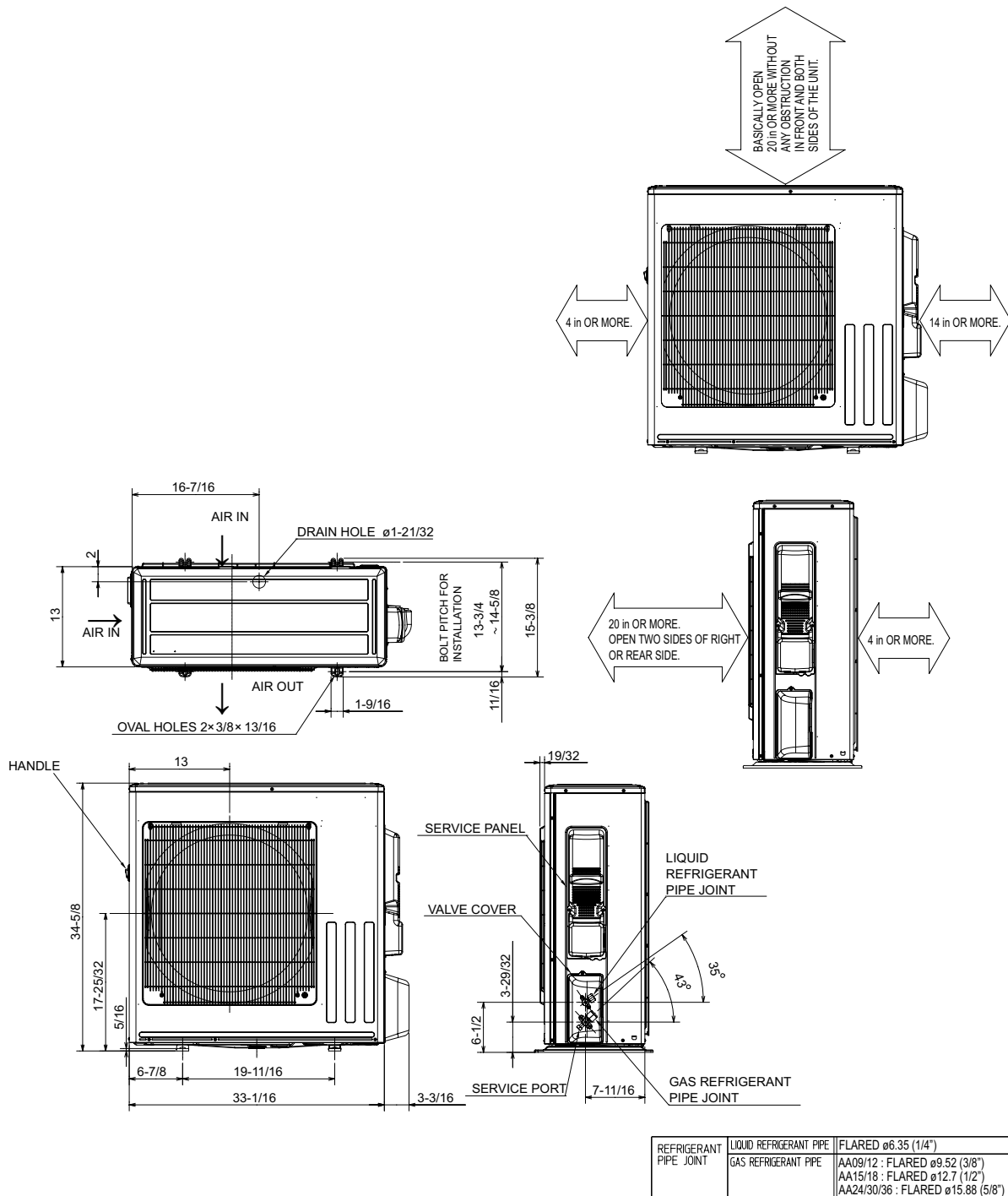
MFZ-KX15NL- U1

MFZ-KX18NL- U1



# OUTDOOR UNIT DIMENSIONS: SUZ-AA18NLHZ

## REQUIRED SPACE



1340 Satellite Boulevard Suwanee, GA 30024  
Toll Free: 800-433-4822 <https://mitsubishicomfort.com>



METUS\_2025-02\_PROPIN