

# SUBMITTAL - 12KUAS1C

Job Name: \_\_\_\_\_

Date: \_\_\_\_\_

Location: \_\_\_\_\_

**R32**

Indoor Unit: **ACUH12KUAS**

Outdoor Unit: **AOUH12KUAS1**



## FEATURES

### INDOOR UNIT:

- Compact cassette indoor unit delivering superior comfort and energy-efficient performance
- Indoor unit with ProCore™ (High Corrosion Resistant Copper) coils for long-lasting protection against corrosion
- Whisper-quiet operation with sound levels as low as 29dB
- Multiple fan speed options; Auto, High, Med, Low, and Quiet
- Special Operation modes available:
  - Economy Mode/ Energy Saving Mode / Powerful Mode / Minimum Heat Mode / Automatic defrosting operation / Auto-restart function
- Enhanced controls platform for seamless, intuitive operation:
  - Seamless control using the Optional Wireless Remote Controller (UTY-LNTU)
  - Optional Wi-Fi connectivity enables remote monitoring through the Airstage Mobile App
  - Extended connectivity with support for third-party interface options
  - Compatible with BACnet and Modbus protocols for seamless integration with Building Management and Home Automation Systems
- Advanced scheduling and timer options offer greater control over unit operation:
  - Weekly Timer / 24-hr Timer / Sleep Function
- Built-in drain pump for efficient water removal making installation and maintenance easier
- Optional fresh air kit, designed to boost indoor air quality and comfort
- Cassette grille (front panel) fits seamlessly into standard grid-style office ceilings (sold separately)
- Additional premium features include, but are not limited to:
  - Built-in external input and output for interlocking systems with 3rd party devices (Ex: Fire Alarm, Door Switch, Humidifier, Aux. Heat & more)
  - Multiple Auxiliary Heat logic options for optimized heating performance
  - Service monitoring functionality via compatible accessories (UTY-RVRU & UTY-RNRUZ-series)
  - Offers group control, allowing seamless management of multiple units simultaneously.

### OUTDOOR UNIT:

- Low GWP R-32 systems for reduced environmental impact
- INVERTER-driven compressor that offers superior performance, comfort, and energy savings
- Compact outdoor unit with extended line set lengths up to 98ft (30m)
- Up to 33% higher rated heating capacity than nominal capacity



7 Year Compressor, 5 Year Parts out-of-the-box Warranty.



10 Year Compressor, 10 Year Parts Warranty when registered within 60 days of installation in a residence.



12 Year Compressor, 12 Year Parts Warranty when registered within 60 days of installation in a residence and installed by a Fujitsu Elite contractor.



Due to continuous product improvements, specifications are subject to change without notice. Please log in to the Fujitsu Portal for the most up-to-date documentation <https://connect.fujitsugeneral.com>

Version: 20250409A

# SUBMITTAL - 12KUAS1C

## SPECIFICATIONS:

Indoor Unit				ACUH12KUAS				
Outdoor Unit				AOUH12KUAS1				
System Name				12KUAS1C				
AHRI Number				215434546				
SEER2		Cooling		Btu/hW	23.7			
EER2					14.1			
HSPF 2 (IV) / HSPF 2 (V)		Heating		kW/kW	11.5 / 9.2			
COP2					3.6			
Outdoor Operation Range		Cooling		°F (°C)	-5 to 122*8 (-21 to 50*8)			
		Heating			-5 to 75 (-21 to 24)			
Indoor Capacity		Cooling		Rated Min.—Max.	12000			
					Heating	47°FDB (Outdoor temp.)	Rated Min.—Max.	3,100—13,600
		17°FDB (Outdoor temp.) <sup>*1</sup>	Rated Max.	16000				
				5°FDB (Outdoor temp.) <sup>*2</sup>		Rated Max.	3,100—19,400	
							10700	
				17300				
				15500				
		Outdoor Connection pipe		Size		Liquid	Ø1/4 (Ø6.35)	
Gas							Ø3/8 (Ø9.52)	
Method				FLARE				
Pre-charge length				66 (20)				
Min. length				16 (5)				
Max. length				98 (30)				
Max. height difference				49 (15)				
Indoor Dimensions (H × W × D)				Net		in (mm)	9-5/8 × 22-7/16 × 22-7/16 (245 × 570 × 570)	
		Gross					10-7/16 × 28-3/4 × 24-5/8 (265 × 730 × 625)	
Indoor Weight		Net		lb (kg)	33 (15)			
					Gross		42 (19)	
Outdoor Dimensions (H × W × D)		Net		in (mm)	24-7/8 × 31-7/16 × 11-7/16 (632 × 799 × 290)			
					Gross		27-1/4 × 37 × 14-3/4 (692 × 940 × 375)	
Outdoor Weight		Net		lb (kg)	84 (38)			
					Gross		93 (42)	
Indoor Fan		Cooling		High	359 (610)			
					Med	312 (530)		
						Low	277 (470)	
							Quiet	241 (410)
		Heating		High				359 (610)
					Med			312 (530)
						Low		277 (470)
							Quiet	241 (410)
		Type × Qty						TURBO FAN × 1
		Motor output						W
Outdoor Fan		Airflow rate	Cooling		CFM (m³/h)	1,171 (1,990)		
			Heating			1,089 (1,850)		
		Type × Qty				PROPELLER FAN × 1		
		Motor output				W	49	
Indoor Sound Pressure Level <sup>*4</sup>		Cooling		High	dB (A)	37		
						Med	34	
							Low	31
								Quiet
		Heating		High				
						Med		
							Low	
								Quiet
Outdoor Sound Pressure Level <sup>*4</sup>		Cooling			48			
		Heating			49			

# SUBMITTAL - 12KUAS1C

## SPECIFICATIONS:

Outdoor Refrigerant		Type		R32	
		Charge	lb oz	2 lb 4 oz	
			g	1020	
Additional Charge Calculation			oz/ft	0.22	
			g/m	20	
Outdoor Refrigerant Oil		Type		RMM68AF	
		Amount	in³ (cm³)	24.4 (400)	
Indoor Moisture removal			pints/h (L/h)	2.5 (1.2)	
Indoor Drain hose		Material		POLYVINYL CHLORIDE	
		Tip Diameter	in (mm)	I.D.: Ø1 (Ø25.0), O.D.: Ø1-1/4 (Ø32.0)	
Indoor Operation range		Cooling	°F (°C)	64 to 90 (18 to 32)	
			%RH	80 or less	
		Heating	°F (°C)	60 to 86 (16 to 30)	
Power Supply				208/230 V~ 60 Hz	
Available Voltage Range				187—253	
System power supply		Voltage		V	208/230
		Frequency		Hz	60
		Available voltage range		V	187—253
Indoor Current	Cooling		A	3.8	
	Heating			5.8	
Maximum Operating Current*³				Cooling	10.2
				Heating	11.7
Outdoor Starting Current				5.8	
MCA*⁵				11.7	
Wiring spec.*⁶		MAX. CKT. BKR*⁷		15	
Indoor Input Power	Cooling			Rated	0.85
			Min.—Max.	0.15—1.36	
	Heating	47°FDB (Outdoor temp.)	Rated	1.3	
			Min.—Max.	0.21—2.02	
		17°FDB (Outdoor temp.)*¹	Rated	1.05	
			Max.	2.18	
		5°FDB (Outdoor temp.)*²	Rated	2.25	
			Max.		
Indoor Power Factor	Cooling		%	97.3	
	Heating			97.5	
Energy Star*⁹				ES, ESCC, ESME	

### NOTES:

- Cooling: Indoor temperature of 80°F (26.67°CDB)/67°FWB (19.44°CWB), and outdoor temperature of 95°FDB (35°CDB)/75°FWB (23.9°CWB).
- Heating: Indoor temperature of 70°FDB (21.11°CDB)/60°FWB (15.56°CWB), and outdoor temperature of 47°FDB (8.33°CDB)/43°FWB (6.11°CWB).
- 17°FDB (Outdoor temp.),
- 5°FDB (Outdoor temp.)
- \*1: Heating (17°F): Indoor temperature of 70°FDB (21.11°CDB)/60°FWB (15.56°CWB), and outdoor temperature of 17°FDB (-8.33°CDB)/15°FWB (-9.44°CWB).
- \*2: Heating (5°F): Indoor temperature of 70°FDB (21.11°CDB)/60°FWB (15.56°CWB), and outdoor temperature of 5°FDB (-15.0°CDB)/4°FWB (-15.56°CWB).
- Test conditions are based on AHRI 210/240 2023.
- \*4:
- Indoor Sound Pressure Level, Measured values in manufacturer's anechoic chamber.
- Outdoor Sound Pressure Level, Because of the surrounding sound environment, the sound levels measured in actual installation conditions might be higher than the specified values here.
- \*3:
- Maximum Operating Current – Maximum current is maximum value when operated within the operation range.
- The total current of indoor unit and outdoor unit.
- MCA – \*5: Minimum Circuit Ampacity (Calculation based on UL60335-2-40)
- \*6: Selected sample based on Japan Electrotechnical Standards and Codes Committee E0005.
- Wiring spec. As the regulations of wire size and circuit breaker differ in each country or region, select appropriate devices complied to the regional standard.
- MAX. CKT. BKR – \*7: Maximum Circuit Breaker
- Operation Range – \*8: Suction temperature of the outdoor unit.
- Energy Star – \*9 : ES = Energy Star, ESCC = Energy Star Cold Climate, ESME= Energy Star Most Efficient.

System continues to operate below rated outdoor operation temperature range, subject to varying conditions. System has no low temperature cut out. Capacity is not tested outside of the rated temperature range.

## SUBMITTAL - 12KUAS1C

### ACCESSORIES:

Model Number	Description
UTY-RVRU	KAGAMI - Touch Panel Wired Controller
UTY-RNRUZ5	Touch Panel Wired Remote Controller
UTY-RHRY	Simple Wired Remote (Without Mode Function) - Hospitality
UTY-RSRY	Simple Wired Remote (With Mode Function)
UTY-LNTU	Wireless Remote Controller (Compact Cassette)
UTY-TFSXJ4	Wi-Fi adapter (WiFi Interface Module UART Type)
FJ-AC-WIFI-1	Intesis Wi-Fi Device: Wired Module
FJ-IR-WIFI-1NA	Intesis IR Wireless AC Cloud Control Interface (Intesis Home app)
BM101WA	Cielo - Breez Max IR Controller w/ WiFi (Black)
BM102WA	Cielo - Breez Max IR Controller w/ WiFi (White)
UTY-VMSX	Modbus Converter
UTY-VTGX	Network Converter - Convert H-Series Comm. Protocol to V/J-Series Comm.
FJ-AC-485-1	Intesis - BACnet MSTP & Modbus RTU Gateway
UTY-TERX	External Switch Controller
UTY-TTRXZ1 <sup>*1</sup>	24V Thermostat Interface
TTRXZ1-KIT <sup>*1</sup>	24V Thermostat Interface Kit (UTY-TTRXZ1, UTY-WiFi Plug & 24V Transformer)
UTY-XCSX	External input and output PCB
UTY-XWZXZG	External Connect Kit
UTZ-GXEA	External input and output PCB box
UTZ-KXGC	High Humidity Insulation Kit
UTR-YDZB	Air Outlet Shutter Plate
UTZ-VXAA	Fresh Air Intake Kit
UTY-DSGYZ2 <sup>*2</sup>	Airstage Edge Controller
UTZ-DUHGG2A	Hail Guard
UTZ-DUSHG2A	Snowhood
UTZ-DUWBG2A	Wind Baffle
UTG-CCGFGA	Cassette Grille

NOTES:

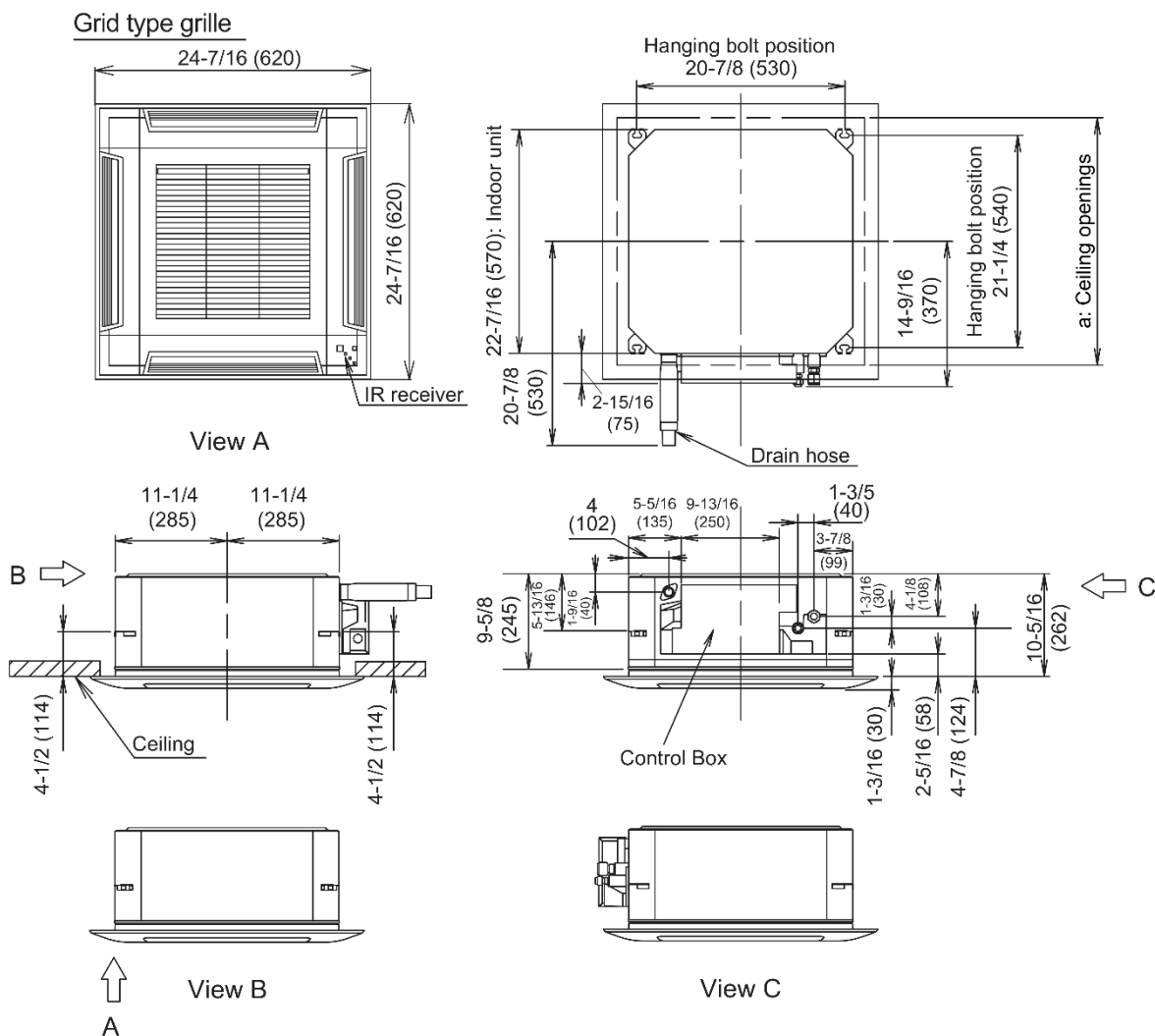
\*1 - This device may not be used with any other type of controls (central controller, wire/wireless RC, WiFi adapter, BMS interface).

\*2 - Connection to AIRSTAGE Cloud requires a compatible AIRSTAGE Mobile adapter connected to the IDU.

# SUBMITTAL - 12KUAS1C

## INDOOR UNIT DIMENSIONS:

Unit: in (mm)

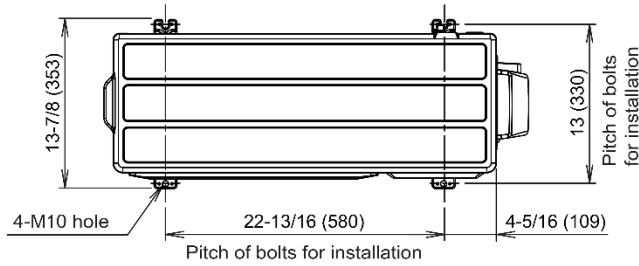


a: Ceiling openings			
Cassette grille	Grid type	in (mm)	22-13/16 to 24 (580 to 610)

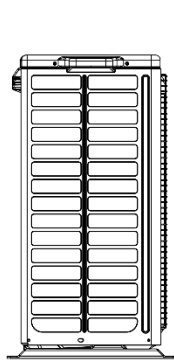
# SUBMITTAL - 12KUAS1C

## OUTDOOR UNIT DIMENSIONS:

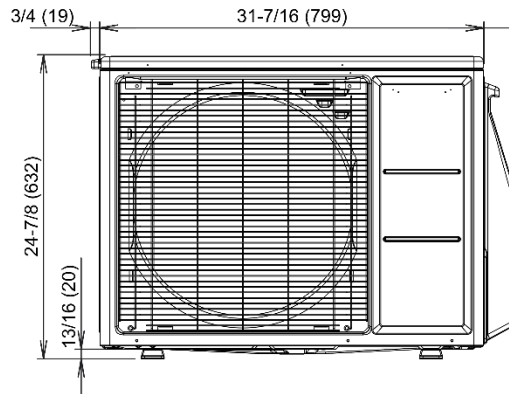
Unit: in (mm)



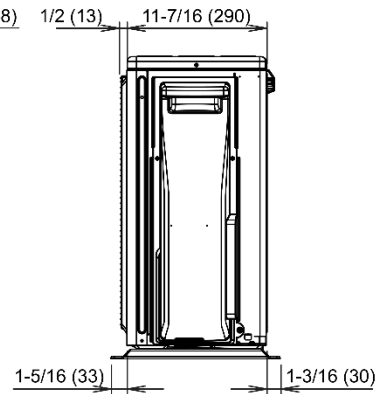
Top view



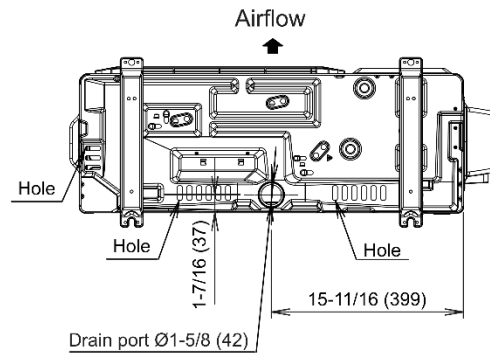
Side view



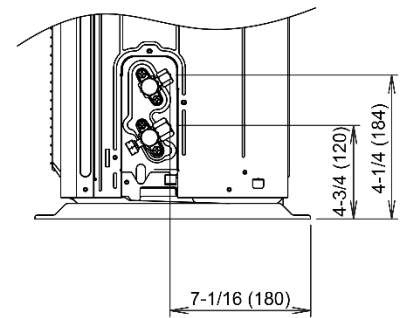
Front view



Side view



Bottom view



Side view (Valve part)