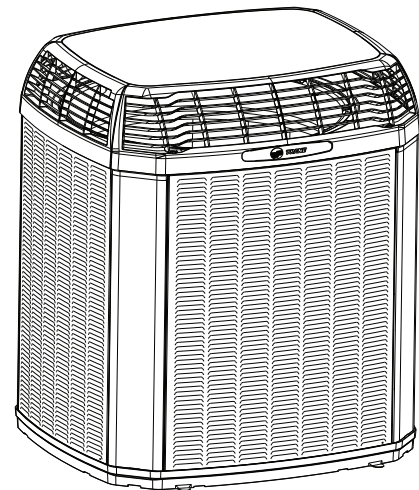




# Product and Submittal Data

## 20 TruComfort™ Variable Speed Air Conditioners with WeatherGuard™

5TTV0X24A1000A/B  
5TTV0X25A1000A/B  
5TTV0X36A1000A/B  
5TTV0X48A1000A/B  
5TTV0X60A1000A/B



**Note:** Graphics in this document are for representation only.  
Actual model may differ in appearance.



The Diagnostics Mobile App is available by scanning a QR code above, the one located inside this unit or by searching for the Trane or American Standard Diagnostics App in your App Store®. This system must include a A/T HUI2360A200U thermostat and a TSYS2C60A2VVU system controller to operate and is Link communicating only.



## Copyright

This document and the information in it are the property of Trane, and may not be used or reproduced in whole or in part without written permission. Trane reserves the right to revise this publication at any time, and to make changes to its content without obligation to notify any person of such revision or change.

## Trademark

All trademarks referenced in this document are the trademarks of their respective owners.

## Data Notes

This document supersedes and includes data from the documents listed below.

**Table 1. Data notes**

Literature Number	Title
ODR-PRD004*-EN	TRANE Link Variable Speed Air Conditioner 5TTV0X24A1000A/B to 5TTV0X60A1000A/B
TA02-PRQ001*-EN	TRANE Link Variable Speed Air Conditioner 5TTV0X24A1000A/B
TA02-PRQ002*-EN	TRANE Link Variable Speed Air Conditioner 5TTV0X25A1000A/B
TA03-PRQ001*-EN	TRANE Link Variable Speed Air Conditioner 5TTV0X36A1000A/B
TA04-PRQ001*-EN	TRANE Link Variable Speed Air Conditioner 5TTV0X48A1000A/B
TA06-PRQ001*-EN	TRANE Link Variable Speed Air Conditioner 5TTV0X60A1000A/B



# Table of Contents

Model Nomenclature .....	4
General Data .....	5
Product Specifications .....	6
Sound Data.....	10
Wiring Diagram .....	11
Dimensional Data.....	12
Mechanical Specification Options .....	13



# Model Nomenclature

## Outdoor Units

### Digit 1 — Refrigerant Type

5 = R-454B

### Digit 2 — Brand

T = Trane

### Digit 3 — System Type

C = Cold Climate Heat Pump

T = AC

W = HP

### Digit 4 — Product Family

A = Light Commercial

B = XB

R = Wire Top Grille

V = VSPD

X = WeatherGuard Top

### Digit 5 — Nominal Rated SEER2

0 = 20 SEER2

3 = 13 SEER2

4 = 14 SEER2

5 = 15 SEER2

6 = 16 SEER2

7 = 17 SEER2

8 = 18 SEER2

### Digit 6 — Field Connection

0 = Brazed

5 = Mechanical

X = Link™

### Digit 7, 8 — Nominal Tonnage

12 = 1.0

18 = 1.5

19 = 1.5

24 = 2.0

25 = 2.0

30 = 2.5

31 = 2.5

36 = 3.0

37 = 3.0

42 = 3.5

43 = 3.5

48 = 4.0

49 = 4.0

60 = 5.0

61 = 5.0

72 = 6.0

### Digit 9 — Major Design Change

A Thru Z Mode = No F, I, 0

### Digit 10 — Power Supply (Voltage/Phz/Hz)

1 = 200-208-230/1/60

3 = 200-230/3/60

4 = 460/3/60

5 = 400/3/60

A = 220-240/1/50

D = 380-415/3/50

### Digit 11, 12, 13 — Other Functions

000 = Typical-no meaning

B = XB

R = Wire Top Grille

V = VSPD

X = WeatherGuard Top

### Digit 14 — Minor Design Change

A Thru Z Mode = No F, I, 0

### Digit 14 — Service Digit - Not Orderable

A Thru Z Mode = No F, I, 0



## General Data

**AHRI standard 210/240 rating conditions:**

- Cooling: 80°F DB; air entering indoor coil: 67°F WB; air entering outdoor coil: 95°F DB
- High temperature heating: 47°F DB; air entering outdoor coil: 43°F WB; entering indoor coil: 70°F DB
- Low temperature heating: 17°F DB; air entering outdoor coil: 15°F WB; air entering indoor coil: 70°F DB
- Rated indoor airflow for heating is the same as for cooling.

**AHRI standard 270 rating conditions:**

The noise rating numbers are determined with the unit in cooling operation. Standard Noise Rating number is at 95°F outdoor air.



# Product Specifications

**Table 2. Models 5TTV0X24A1000A, 5TTV0X24A1000B, 5TTV0X25A1000A, and 5TTV0X25A1000B**

Outdoor Unit (a) (b)	5TTV0X24A1000A	5TTV0X24A1000B	5TTV0X25A1000A	5TTV0X25A1000B
Power Conns. — V/Ph/Hz (c)	208/230/1/60	208/230/1/60	208/230/1/60	208/230/1/60
Min. Brch. Cir. Ampacity	19	19	19	19
Br. Cir. Prot. Rtg. — Rec/Max. (Amps)	30	20/30	30	20/30
<b>Compressor</b>	Rotary	Rotary	Rotary	Rotary
No. Used — No. Speeds	1-Variable	1-Variable	1-Variable	1-Variable
MRC	17.8	17.8	17.8	17.8
<b>Factory Installed</b>				
Start Components (d)	No	No	No	No
Insulation/Sound Blanket	Yes	Yes	Yes	Yes
Compressor Heat	Yes	Yes	Yes	Yes
<b>Outdoor Fan</b>				
Dia. (In.) — No. Used	23-1	23-1	27.5-1	27.5-1
Type Drive — No. Speeds	Direct-Variable	Direct-Variable	Direct-Variable	Direct-Variable
No. Motors — Hp	1-1/3	1-1/3	1-1/2	1-1/2
Motor Speed R.P.M.	200-1200	200-1200	200-1200	200-1200
Volts/Ph/Hz	245-385/3/60	245-385/3/60	245-385/3/60	245-385/3/60
MOC	1.5	1.5	2.3	2.3
<b>Outdoor Coil — Type</b>	Spine Fin™	Spine Fin™	Spine Fin™	Spine Fin™
Rows — F.P.I.	1-24	1-24	2-24	2-24
Face Area (Sq. Ft.)	19.77	19.77	30.8	30.8
Tube Size (In.)	3/8	3/8	3/8	3/8
<b>Refrigerant</b>	R-454B	R-454B	R-454B	R-454B
Lbs. — R-454B (O.D. Unit) (e)	6 LB-8 OZ	6 LB-8 OZ	10 LB-1 OZ	10 LB-1 OZ
Factory Supplied	Yes	Yes	Yes	Yes
Rated Line Size — In. O.D. Gas (f)	1/2	1/2	1/2	1/2
Rated Line Size — In. O.D. Liq. (f)	5/16	5/16	5/16	5/16
<b>Charging Specifications</b>				
Subcooling	10	10	8	8
<b>Dimensions</b>	H x W x D	H x W x D	H x W x D	H x W x D
Crated (In.)	50 x 30 x 33	50 x 30 x 33	55 x 35 x 38	55 x 35 x 38
<b>Weight</b>				
Shipping (Lbs.)	208	208	256	256
Net (Lbs.)	187	187	230	230
<b>Optional Accessories</b>				
Rubber Isolator Kit	BAYISLT101	BAYISLT101	BAYISLT101	BAYISLT101
Snow Leg — Base and Cap 4-in. High	BAYLEGS002	BAYLEGS002	BAYLEGS002	BAYLEGS002
Snow Leg — 4-in. Extension	BAYLEGS003	BAYLEGS003	BAYLEGS003	BAYLEGS003
SmartCharge™ Tool	BAYCAKT002	BAYCAKT002	BAYCAKT002	BAYCAKT002

**Table 2. Models 5TTV0X24A1000A, 5TTV0X24A1000B, 5TTV0X25A1000A, and 5TTV0X25A1000B (continued)**

Outdoor Unit <sup>(a)</sup> <sup>(b)</sup>	5TTV0X24A1000A	5TTV0X24A1000B	5TTV0X25A1000A	5TTV0X25A1000B
Extreme Condition Mounting Kit	BAYECMT023	BAYECMT023	BAYECMT023	BAYECMT023
Refrigerant Lineset <sup>(g)</sup>	—			

<sup>(a)</sup> Certified in accordance with the Unitary Air-conditioner equipment certification program which is based on AHRI standard 210/240.

<sup>(b)</sup> Rated in accordance with AHRI standard 270/275.

<sup>(c)</sup> Calculated in accordance with N.E.C. Only use HACR circuit breakers or fuses.

<sup>(d)</sup> No means no start components. Yes means quick start kit components. PTC means positive temperature coefficient starter. Optional kit shown.

<sup>(e)</sup> This value approximate. For more precise value see unit nameplate.

<sup>(f)</sup> Reference the outdoor unit ship-with literature for refrigerant piping length and lift guidelines. Reference the refrigerant piping software pub # 32-3312-xx or *Refrigerant Piping Manual for Small Split Cooling and Heat Pump Systems Application Guide* (SS-APG006\*-EN) for long line sets or specialty applications (xx denotes latest revision).

<sup>(g)</sup> 25, 30, 35 and 50 foot linesets available. For a complete listing of lineset options available from equipment or supply stores, refer to the Trane Residential and Light Commercial Product Handbook.

**Table 3. Models 5TTV0X36A1000A, 5TTV0X36A1000B, 5TTV0X48A1000A, and 5TTV0X48A1000B**

Outdoor Unit <sup>(a)</sup> <sup>(b)</sup>	5TTV0X36A1000A	5TTV0X36A1000B	5TTV0X48A1000A	5TTV0X48A1000B
Power Conns. — V/Ph/Hz <sup>(c)</sup>	208/230/1/60	208/230/1/60	208/230/1/60	208/230/1/60
Min. Brch. Cir. Ampacity	26	26	32	32
Br. Cir. Prot. Rtg. — Rec/Max. (Amps)	40	30/40	50	35/50
<b>Compressor</b>	Scroll	Scroll	Scroll	Scroll
No. Used — No. Speeds	1-Variable	1-Variable	1-Variable	1-Variable
MRC	18	18	22.4	22.4
<b>Factory Installed</b>				
Start Components <sup>(d)</sup>	No	No	No	No
Insulation/Sound Blanket	Yes	Yes	Yes	Yes
Compressor Heat	Yes	Yes	Yes	Yes
<b>Outdoor Fan</b>				
Dia. (In.) — No. Used	27.5-1	27.5-1	27.5-1	27.5-1
Type Drive — No. Speeds	Direct-Variable	Direct-Variable	Direct-Variable	Direct-Variable
No. Motors — Hp	1-1/2	1-1/2	1-1/2	1-1/2
Motor Speed R.P.M.	200-1200	200-1200	200-1200	200-1200
Volts/Ph/Hz	245-385/3/60	245-385/3/60	245-385/3/60	245-385/3/60
MOC	2.3	2.3	2.3	2.3
<b>Outdoor Coil — Type</b>	Spine Fin™	Spine Fin™	Spine Fin™	Spine Fin™
Rows — F.P.I.	2-24	2-24	2-24	2-24
Face Area (Sq. Ft.)	30.8	30.8	30.8	30.8
Tube Size (In.)	3/8	3/8	3/8	3/8
<b>Refrigerant</b>	R-454B	R-454B	R-454B	R-454B
Lbs. — R-454B (O.D. Unit) <sup>(e)</sup>	11 LB-5 OZ	11 Lb-5 Oz	12 Lb-7 Oz	12 Lb-7 Oz
Factory Supplied	Yes	Yes	Yes	Yes
Rated Line Size — In. O.D. Gas <sup>(f)</sup>	5/8	5/8	7/8	7/8
Rated Line Size — In. O.D. Liq. <sup>(f)</sup>	5/16	5/16	5/16	5/16
<b>Charging Specifications</b>				
Subcooling	8	8	8	8
<b>Dimensions</b>	H x W x D	H x W x D	H x W x D	H x W x D
Crated (In.)	55 x 35 x 38	55 x 35 x 38	55 x 35 x 38	55 x 35 x 38
<b>Weight</b>				
Shipping (Lbs.)	291	291	291	291



## Product Specifications

**Table 3. Models 5TTV0X36A1000A, 5TTV0X36A1000B, 5TTV0X48A1000A, and 5TTV0X48A1000B (continued)**

Outdoor Unit <sup>(a) (b)</sup>	5TTV0X36A1000A	5TTV0X36A1000B	5TTV0X48A1000A	5TTV0X48A1000B
Net (Lbs.)	265	265	265	265
<b>Optional Accessories</b>				
Rubber Isolator Kit	BAYISLT101	BAYISLT101	BAYISLT101	BAYISLT101
Snow Leg — Base and Cap 4-in. High	BAYLEGS002	BAYLEGS002	BAYLEGS002	BAYLEGS002
Snow Leg — 4-in. Extension	BAYLEGS003	BAYLEGS003	BAYLEGS003	BAYLEGS003
SmartCharge™ Tool	BAYCAKT002	BAYCAKT002	BAYCAKT002	BAYCAKT002
Extreme Condition Mounting Kit	BAYECMT023	BAYECMT023	BAYECMT023	BAYECMT023
Refrigerant Lineset <sup>(g)</sup>	—			

<sup>(a)</sup> Certified in accordance with the Unitary Air-conditioner equipment certification program which is based on AHRI standard 210/240.

<sup>(b)</sup> Rated in accordance with AHRI standard 270/275.

<sup>(c)</sup> Calculated in accordance with N.E.C. Only use HACR circuit breakers or fuses.

<sup>(d)</sup> No means no start components. Yes means quick start kit components. PTC means positive temperature coefficient starter. Optional kit shown.

<sup>(e)</sup> This value approximate. For more precise value see unit nameplate.

<sup>(f)</sup> Reference the outdoor unit ship-with literature for refrigerant piping length and lift guidelines. Reference the refrigerant piping software pub # 32-3312-xx or *Refrigerant Piping Manual for Small Split Cooling and Heat Pump Systems Application Guide* (SS-APG006\*-EN) for long line sets or specialty applications (xx denotes latest revision).

<sup>(g)</sup> 25, 30, 35 and 50 foot linesets available. For a complete listing of lineset options available from equipment or supply stores, refer to the Trane Residential and Light Commercial Product Handbook.

**Table 4. Models 5TTV0X60A1000A and 5TTV0X60A1000B**

Outdoor Unit <sup>(a) (b)</sup>	5TTV0X60A1000A	5TTV0X60A1000B
Power Conns. — V/Ph/Hz <sup>(c)</sup>	208/230/1/60	208/230/1/60
Min. Brch. Cir. Ampacity	43	43
Br. Cir. Prot. Rtg. — Rec/Max. (Amps)	60	40/60
<b>Compressor</b>	Scroll	Scroll
No. Used — No. Speeds	1-Variable	1-Variable
MRC	27.5	27.5
<b>Factory Installed</b>		
Start Components <sup>(d)</sup>	No	No
Insulation/Sound Blanket	Yes	Yes
Compressor Heat	Yes	Yes
<b>Outdoor Fan</b>		
Dia. (In.) — No. Used	27.5-1	27.5-1
Type Drive — No. Speeds	Direct-Variable	Direct-Variable
No. Motors — Hp	1-1/2	1-1/2
Motor Speed R.P.M.	200-1200	200-1200
Volts/Ph/Hz	245-385/3/60	245-385/3/60
MOC	2.3	2.3
<b>Outdoor Coil — Type</b>	Spine Fin™	Spine Fin™
Rows — F.P.I.	2-24	2-24
Face Area (Sq. Ft.)	30.8	30.8
Tube Size (In.)	3/8	3/8
<b>Refrigerant</b>	R-454B	R-454B
Lbs. — R-454B (O.D. Unit) <sup>(e)</sup>	12 LB-0 OZ	12 LB-0 OZ
Factory Supplied	Yes	Yes
Rated Line Size — In. O.D. Gas <sup>(f)</sup>	7/8	7/8
Rated Line Size — In. O.D. Liq. <sup>(f)</sup>	5/16	5/16



**Table 4. Models 5TTV0X60A1000A and 5TTV0X60A1000B (continued)**

Outdoor Unit <sup>(a)</sup> <sup>(b)</sup>	5TTV0X60A1000A	5TTV0X60A1000B
<b>Charging Specifications</b>		
Subcooling	8	8
<b>Dimensions</b>		
	H x W x D	H x W x D
Crated (In.)	55 x 35 x 38	55 x 35 x 38
<b>Weight</b>		
Shipping (Lbs.)	291	291
Net (Lbs.)	265	265
<b>Optional Accessories</b>		
Rubber Isolator Kit	BAYISLT101	BAYISLT101
Snow Leg — Base and Cap 4-in. High	BAYLEGS002	BAYLEGS002
Snow Leg — 4-in. Extension	BAYLEGS003	BAYLEGS003
SmartCharge™ Tool	BAYCAKT002	BAYCAKT002
Extreme Condition Mounting Kit	BAYECMT023	BAYECMT023
Refrigerant Lineset <sup>(g)</sup>	—	

<sup>(a)</sup> Certified in accordance with the Unitary Air-conditioner equipment certification program which is based on AHRI standard 210/240.

<sup>(b)</sup> Rated in accordance with AHRI standard 270/275.

<sup>(c)</sup> Calculated in accordance with N.E.C. Only use HACR circuit breakers or fuses.

<sup>(d)</sup> No means no start components. Yes means quick start kit components. PTC means positive temperature coefficient starter. Optional kit shown.

<sup>(e)</sup> This value approximate. For more precise value see unit nameplate.

<sup>(f)</sup> Reference the outdoor unit ship-with literature for refrigerant piping length and lift guidelines. Reference the refrigerant piping software pub # 32-3312-xx or *Refrigerant Piping Manual for Small Split Cooling and Heat Pump Systems Application Guide* (SS-APG006\*-EN) for long line sets or specialty applications (xx denotes latest revision).

<sup>(g)</sup> 25, 30, 35 and 50 foot linesets available. For a complete listing of lineset options available from equipment or supply stores, refer to the Trane Residential and Light Commercial Product Handbook.



# Sound Data

**Table 5. Models 5TTV0X24, 5TTV0X25A, 5TTV0X36A, 5TTV0X48A, and 5TTV0X60A**

Model	Mode	Speed	A-Weighted Sound Power Level [dB (A)]	Full Octave Sound Power [dB]							
				63 Hz	125 Hz	250 Hz	500 Hz	1000 Hz	2000 Hz	4000 Hz	8000 Hz
5TTV0X24A	Cool	Min	52	64.2	48.8	52.0	52.3	44.6	37.1	34.2	33.7
	Cool	Max	64	69.5	62.6	59.5	64.4	59.5	50.5	47.0	42.4
5TTV0X25A	Cool	Min	58	65.9	54.9	54.2	58.5	51.2	41.8	32.5	38.7
	Cool	Max	66	73.6	67.1	64.6	63.4	60.8	54.4	47.2	43.4
5TTV0X36A	Cool	Min	53	63.6	51.2	52.5	51.5	48.2	43.4	34.7	38.3
	Cool	Max	69	82.2	70.3	68.3	65.6	65.5	58.3	53.3	48.9
5TTV0X48A	Cool	Min	56	64.8	54.6	56.2	53.6	52.4	47.4	38.0	33.0
	Cool	Max	73	79.7	74.4	72.7	71.3	68.4	63.7	58.2	49.8
5TTV0X60A	Cool	Min	56	62.1	54.6	56.2	53.6	52.4	47.4	38.0	33.0
	Cool	Max	76	77.6	76.7	74.9	74.4	71.6	66.5	61.9	53.7

**Note:** Rated in accordance with AHRI Standard 270.



# Dimensional Data

Figure 2. Dimensional drawing

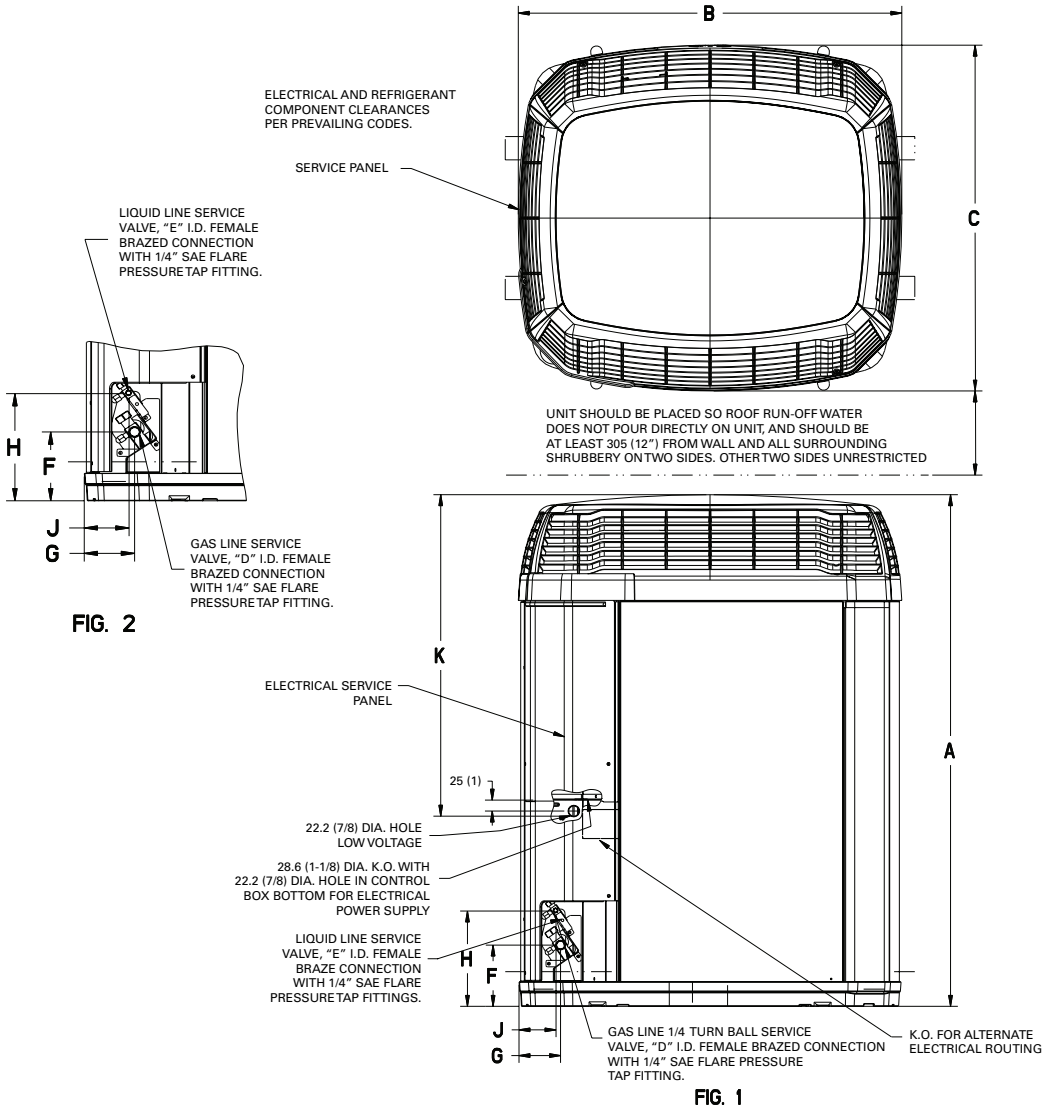


Table 6. Dimensions (inch)

Model	Base	A	B	C	D	E	F	G	H	J	K
5TTV0X24A	3	1178.1 (46.4)	829 (32-5/8)	756 (29-3/4)	13 (1/2)	8 (5/16)	143 (5-5/8)	92 (3-5/8)	210 (8-1/4)	79 (3-1/8)	973.0 (38.3)
5TTV0X25A	4	1307.0 (51.4)	946 (37-1/4)	870 (34-1/4)	13-1/2	8-5/16	143 (5-5/8)	92 (3-5/8)	210 (8-1/4)	79 (3-1/8)	994.1 (39.1)
5TTV0X36A	4	1307.0 (51.4)	946 (37-1/4)	870 (34-1/4)	16-5/8	8-5/16	143 (5-5/8)	92 (3-5/8)	210 (8-1/4)	79 (3-1/8)	994.1 (39.1)
5TTV0X48A	4	1307.0 (51.4)	946 (37-1/4)	870 (34-1/4)	22-7/8	8-5/16	143 (5-5/8)	92 (3-5/8)	210 (8-1/4)	79 (3-1/8)	994.1 (39.1)
5TTV0X60A	4	1307.0 (51.4)	946 (37-1/4)	870 (34-1/4)	22-7/8	8-5/16	143 (5-5/8)	92 (3-5/8)	210 (8-1/4)	79 (3-1/8)	994.1 (39.1)



# Mechanical Specification Options

## **General**

This unit is designed to operate at outdoor ambient temperatures from 55° F to 120° F in cooling. From — 0° F to 66° F in heating (heat pumps only). Only AHRI approved indoor matches are approved for use with these models.

## **Trane Link Air Conditioners**

This outdoor unit contains the Trane Link Air Conditioners digital communication with Plug-n-Play set up.

## **Casing**

Unit casing is constructed of heavy gauge, G60 galvanized steel and painted with a weather-resistant powder paint on all louvered panels and prepaint on all other panels. Corrosion and weatherproof CMBP-G30 DuraTuff™ base.

WeatherGuard™II Top Shields Unit.

## **Refrigerant Controls**

Refrigeration system controls include condenser fan, compressor inverter drive and high and low pressure switches. A factory supplied, field installed filter is standard.

## **Compressor**

Inverter driven compressor with variable output capacities. Noise enclosure minimizes sound levels. Compressor protections reduce operating speed and current draw to maintain operation while protecting the compressor.

## **Condenser Coil**

The Spine Fin™ outdoor coil provides low airflow resistance and efficient heat transfer. The coil is protected on all four sides by louvered panels.

Seacoast Shield.

## **Low Ambient Cooling**

As manufactured, this system has built in freeze protection that will allow cooling operation below 55°F but will reduce capacity or shut down completely to prevent operation under adverse conditions.

## **Comfort Control**

This system must include a A/T HUI2360A200U thermostat and a TSYS2C60A2VVU system controller to operate and is Link communicating only.







Trane - by Trane Technologies (NYSE: TT), a global innovator - creates comfortable, energy efficient indoor environments for commercial and residential applications. For more information, please visit [trane.com](http://trane.com) or [tranetechnologies.com](http://tranetechnologies.com).



The AHRI Certified mark indicates Trane U.S. Inc. participation in the AHRI Certification program. For verification of individual certified products, go to [ahridirectory.org](http://ahridirectory.org).

Trane has a policy of continuous data improvement and it reserves the right to change design and specifications without notice. We are committed to using environmentally conscious print practices.